

INSTRUCTIONS



308658

Rev. B



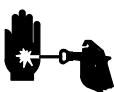
This manual contains important warnings and information.
READ AND KEEP FOR REFERENCE.

INSTRUCTIONS

GM 3000® AIRLESS PAINT SPRAYER Field Replacement Kit 238803

GENERAL REPAIR INFORMATION

WARNING



INJECTION HAZARD

The system pressure must be manually relieved to prevent the system from starting or spraying accidentally. Fluid under high pressure can be injected through the skin and cause serious injury. To reduce the risk of an injury from injection, splashing fluid, or moving parts, follow the **Pressure Relief Procedure** whenever you:

- are instructed to relieve the pressure,
- stop spraying,
- check or service any of the system equipment,
- or install or clean the spray tip.

Pressure Relief Procedure

1. Engage the gun safety latch.
2. Turn the engine switch to OFF.
3. Move the pressure control switch to OFF.
4. Disengage the gun safety latch. Hold a metal part of the gun firmly to a grounded metal pail. Trigger the gun to relieve pressure.
5. Engage the gun safety latch.
6. Open the pressure drain valve. Leave the pressure drain valve open until ready to spray again.
7. Disconnect the spark plug cable.

If you suspect that the spray tip or hose is completely clogged, or that pressure has not been fully relieved after following the steps above, VERY SLOWLY loosen the tip guard retaining nut or hose end coupling to relieve pressure gradually, then loosen completely. Now clear the tip or hose.

GRACO INC. P.O. BOX 1441 MINNEAPOLIS, MN 55440-1441

©COPYRIGHT 1996, GRACO INC.

Graco Inc. is registered to I.S. EN ISO 9001

Replacement

⚠ WARNING

To reduce the risk of serious injury, follow the **Pressure Relief Procedure** on page 1 before performing this procedure.

Tool List

3/16 in. hex key wrench

1/4 in. hex key wrench

Standard screwdriver

Cleaning solvent

1. Remove rotor (51a).
2. Back out the four set screws (58) holding the field (53) to the clutch housing (1) approximately 3 turns.
3. Pull out the field (53). The field fits closely to the clutch housing and must be removed carefully to prevent jamming.
4. Pull the plastic caps (B) off the wire screws (79) in both places on the field. Remove the screws and remove the harness (D).

5. Fig. 1. Connect the correct color wires of the harness (D) with the correct screws (79) in both places on the new field. Pull the plastic caps (B) up and snap them over the screws. Install the field in the clutch housing. Align the set screw holes in the field and the clutch housing (1). Hand tighten the set screws (58) oppositely and evenly.
6. Install the rotor (51a). Set the clearance between the outside diameter of the rotor and the inside diameter of the field with the four 0.006 in. (0.15 mm) gages (A), supplied. Place the gages 90° apart.
7. Adjust the position of the field with the four set screws (58) to maintain 0.006 in. (0.15 mm) minimum clearance all the way around the rotor.
8. Tighten the four set screws (58), evenly, to 25 in-lb (2.8 N•m). Remove the four gages.
9. Pull the engine recoil rope to assure that the engine turns freely, and there is no contact between the rotor (51a) and the field (53). If there is contact, loosen the set screws and reposition the field.

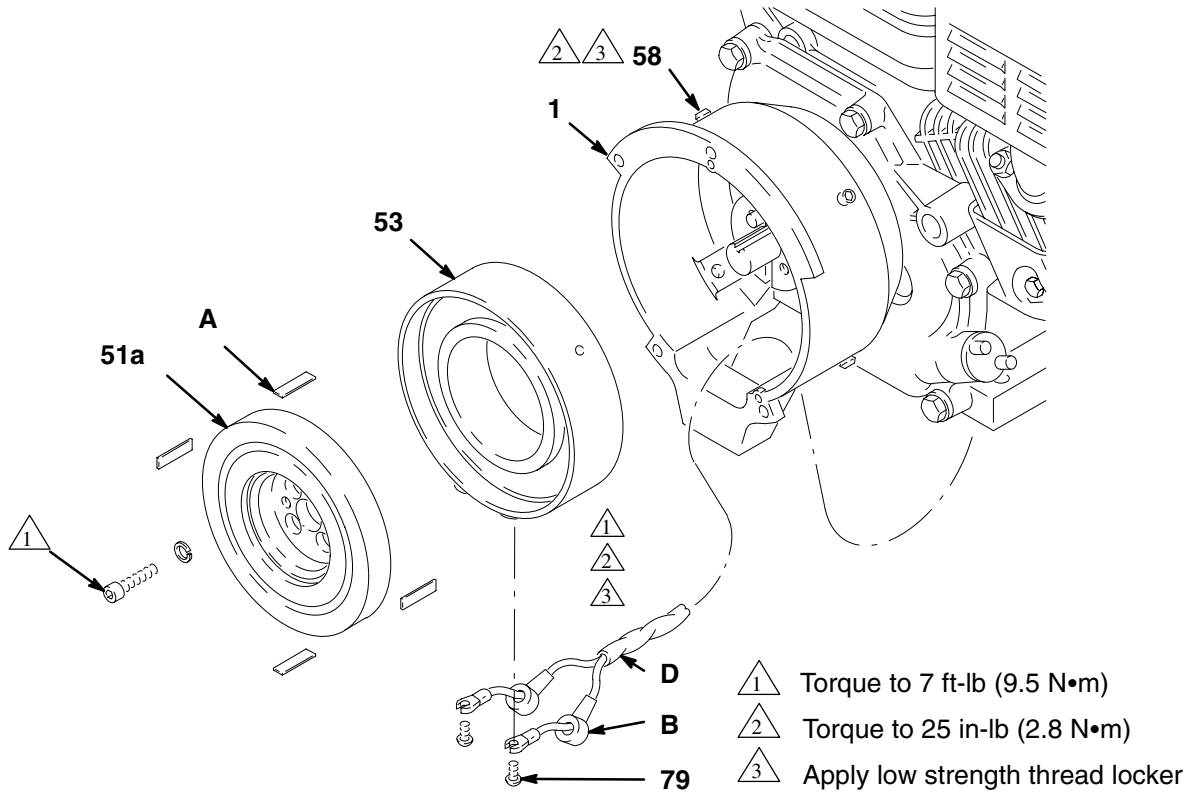


Fig. 1

05701

Sales Offices: Minneapolis
International Offices: Belgium, Korea, Hong Kong, Japan

GRACO INC. P.O. BOX 1441 MINNEAPOLIS, MN 55440-1441

PRINTED IN U.S.A. 308658 March 1996, Revised 2/2004