



## Important Safety Instructions

Read all warnings and instructions in this manual. Save these instructions.

# FTx Spray Gun Swivel Replacement Kit 238817

## GENERAL REPAIR INFORMATION

### **WARNING**



#### **INJECTION HAZARD**

The system pressure must be manually relieved to prevent the system from starting or spraying accidentally. Fluid under high pressure can be injected through the skin and cause serious injury. To reduce the risk of an injury from injection, splashing fluid, or moving parts, follow the **Pressure Relief Procedure** whenever you:

- are instructed to relieve the pressure,
- stop spraying,
- check or service any of the system equipment,
- or install or clean the spray tip.

### **Pressure Relief Procedure**

1. Engage the gun safety latch.
2. Turn the ON/OFF switch to OFF.
3. Unplug the power supply cord.
4. Disengage the gun safety latch. Hold a metal part of the gun firmly to a grounded metal pail. Trigger the gun to relieve pressure.
5. Engage the gun safety latch.
6. Open the pressure drain valve. Leave the pressure drain valve open until ready to spray again.

*If you suspect that the spray tip or hose is completely clogged, or that pressure has not been fully relieved after following the steps above, VERY SLOWLY loosen the tip guard retaining nut or hose end coupling to relieve pressure gradually, then loosen completely. Now clear the tip or hose obstruction.*

**Test your repair before regular operation** of the sprayer to be sure the problem is corrected.

# Service

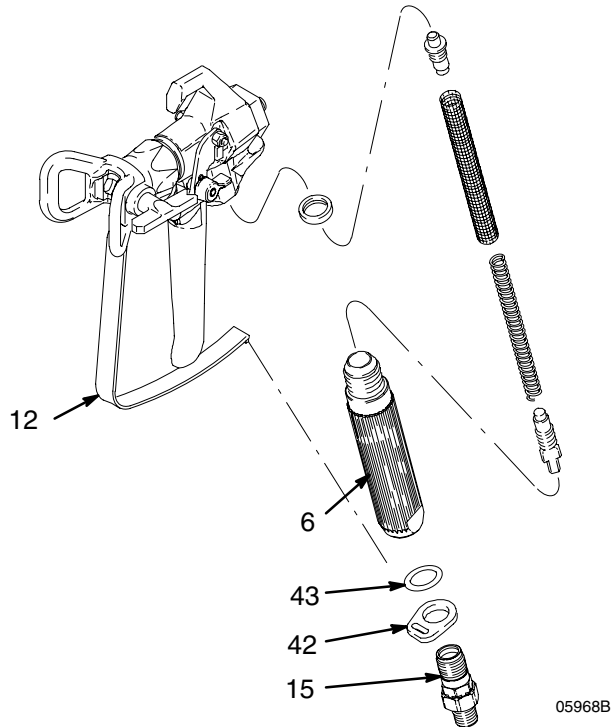
## Replace Swivel

### Disassembly

1. Follow **Pressure Relief Procedure** on page 1.
2. Push up on trigger guard (12) and swing trigger guard away from trigger (5).
3. Unscrew gun handle (6) from housing (26). Remove filter and clean in compatible solvent.
4. Remove swivel (15), guard retainer (42) and cushion o-ring (43) on other side of (42).
5. Save guard retainer and cushion o-ring.

### Reassembly

1. Clean internal thread of handle (6).
2. Install guard retainer (42), cushion o-ring (43) and swivel (15).
3. Apply anaerobic sealant (included in Swivel Kit 238817) to external thread of swivel (15) that connects to swivel handle (6).
4. Install swivel (15) into handle (6). Torque swivel to 250 in-lb.
5. Engage trigger guard (12) to retainer guard (42).



Graco headquarters: Minneapolis  
International Offices: Belgium, China, Japan, Korea

**GRACO INC. P.O. BOX 1441 MINNEAPOLIS, MN 55440-1441**

PRINTED IN U.S.A. 308654 03/1996, Rev 07/2005