



INSTRUCTIONS

This manual contains important  
warnings and information.  
**READ AND KEEP FOR REFERENCE.**

First choice when  
quality counts.™

## HYDRA-CLEAN™ 1535, 2030, 2540, 2835, 3040 Pressure Washers

### Hydra-clean 1535

804506 Series A

1500 psi (102 bar) Operating Pressure

1900 psi (131 bar) Maximum Working Pressure

### Hydra-clean 2030

804532 Series A

2000 psi (138 bar) Operating Pressure

2400 psi (165 bar) Maximum Working Pressure

### Hydra-clean 2540

804507, Series A

2500 psi (172 bar) Operating Pressure

2900 psi (200 bar) Maximum Working Pressure

### Hydra-clean 2835

804583, Series A

2800 psi (193 bar) Operating Pressure

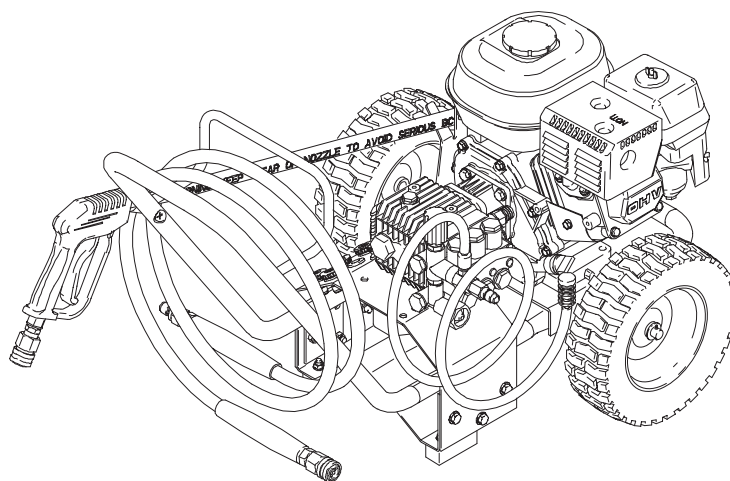
3200 psi (221 bar) Maximum Working Pressure

### Hydra-clean 3040

804508, Series A

3000 psi (207 bar) Operating Pressure

3400 psi (234 bar) Maximum Working Pressure



Model 804506

7329B



# Table of Contents

Warnings .....	2..
Installation .....	4..
Operation .....	5..
Troubleshooting .....	10
800740 & 804544 Pump Service .....	12
804540 & 804559 Pump Service .....	14
Parts List & Drawing	
Hydra-clean 1535, 2030 Pressure Washer .....	16
Hydra-clean 2040, 3040 Pressure Washer .....	18
Hydra-clean 2835 Pressure Washer .....	20
Pump Assembly Models 804740 and 804544 .....	22
Pump Assembly Models 804540 & 804559 .....	24
Accessories .....	27.
Technical Data .....	27.
Graco Warranty .....	28
Graco Phone Number .....	28

## Warning Symbol



**WARNING**

This symbol alerts you to the possibility of serious injury or death if you do not follow the instructions.

## Caution Symbol



**CAUTION**

This symbol alerts you to the possibility of damage to or destruction of equipment if you do not follow the instructions.

## ! WARNING



### INJECTION HAZARD

Spray from the gun, leaks or ruptured components can inject fluid into your body and cause serious injury. Fluid splashed in the eyes or on the skin can also cause serious injury.



- Fluid injected into the skin may look like just a cut, but it is a serious injury. **Get emergency medical attention.**
- Do not point gun at anyone or at any part of body.
- Do not stop or deflect leaks with hand, body, glove or rag.
- Do not put hand or fingers over spray tip.
- Tighten fluid connections before starting equipment.
- Engage the gun trigger safety whenever you stop spraying.
- Follow **Pressure Relief Procedure** on page 5 if spray tip clogs and before cleaning, checking or servicing equipment.
- Repair or replace worn or damaged parts immediately.
- Check hoses, tubes, and coupling daily. Do not repair high pressure couplings: replace entire hose. Fluid hoses must have spring guards on both ends to prevent kinks and rupture.

# **WARNING**



## **HAZARDOUS FLUIDS**

Improper handling of hazardous fluids can cause serious injury, even death, due to splashing in eyes, ingestion or bodily contamination.

- Know specific hazards of fluid being used.
- Store hazardous fluids in approved containers. Dispose of hazardous fluids per local, state and national guidelines.
- Wear protective eyewear, gloves, clothing, and respirator as recommended by the fluid manufacturer.



## **FUEL HAZARD**

The fuel used in this unit is combustible and when spilled on a hot surface can ignite and cause a fire.

- Do not fill the fuel tank while the engine is running or hot.



## **EXHAUST HAZARD**

The exhaust contains poisonous carbon dioxide which is colorless and odorless.

- Do not operate this equipment in a closed building.



## **EQUIPMENT MISUSE HAZARD**

Misuse of the pressure washer or accessories may cause them to rupture and result in fluid injection, splashing in the eyes or on the skin, or other serious injury.

- Do not alter or modify any part or factory-set adjustment of this equipment.
- Do not exceed the maximum working pressure of any component or accessory in the system.
- Do not use any chemicals that are incompatible with the wetted parts as stated in the Technical Data.
- Do not alter throttle setting.

# Installation

## Typical Installation – Pressure Washer

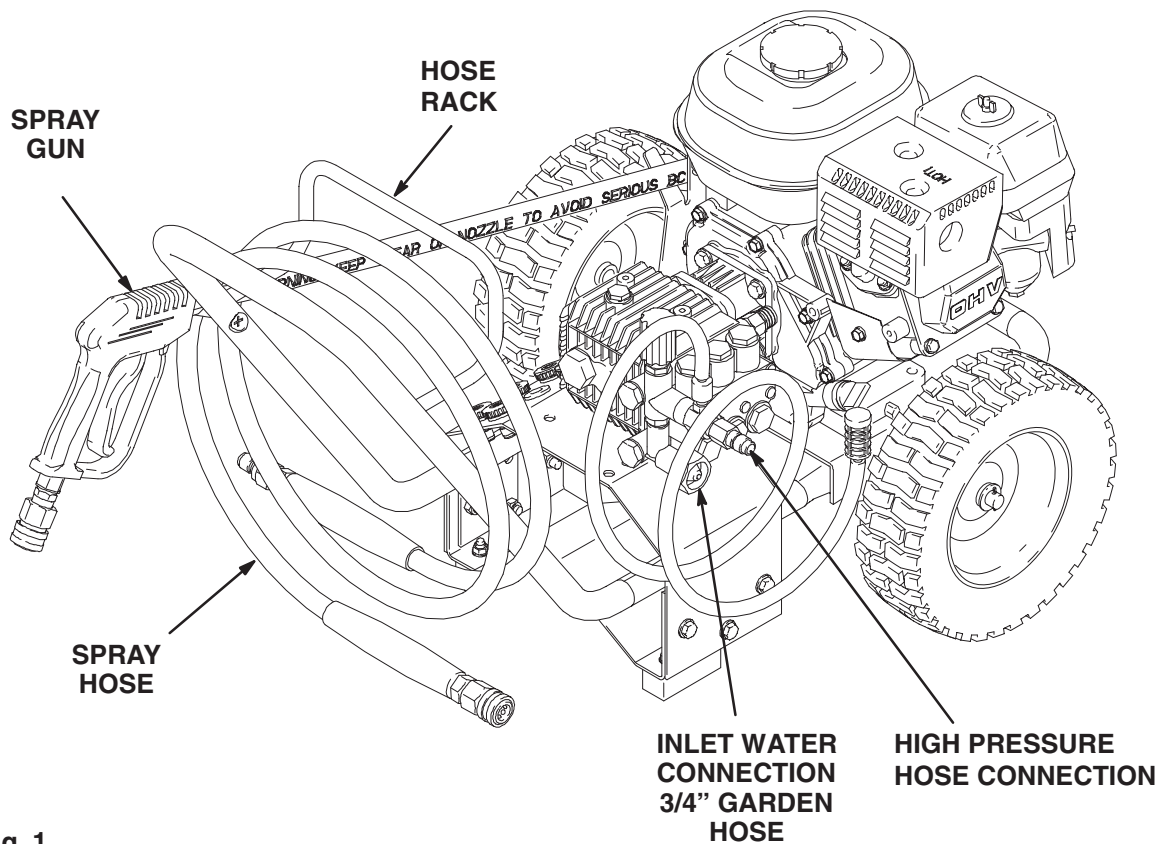


Fig. 1

7329B

### Check for Shipping Damage

Check the unit for any damage that may have occurred in shipping. **Notify the carrier immediately** if there is any damage.

### Set Up

Connect the high pressure hose between the pump outlet and the gun inlet. Both of these connections are made with quick couplers.

#### **⚠ CAUTION**

Up to 100 ft (30 m) of high pressure hose may be used. Longer hoses may affect sprayer performance, and chemical injector performance, if used.

Install the appropriate spray tip on the wand. See Installing and Changing Spray Tips. If you are using a sandblaster kit, see its separate manual for installation instructions.

### Connect to Water Supply

#### **⚠ CAUTION**

Before attaching to the water supply, check your local plumbing code regarding cross-connection to the water supply. If required, a backflow preventer may be installed.

If inlet water pressure is over 60 psi (4.1 bar), a regulating water valve must be installed at the garden hose connection.

Do not exceed 160°F (70°C) inlet water temperature.

Connect a hose with at least a 3/4 inch (19 mm) ID from the water supply to the unit's 3/4 inch garden hose inlet. The supply hose should not be more than 50 ft (15 m) long.

**NOTE:** The water source at the unit *must* have a minimum flow rate equal to that of the unit (see Technical Data, inside back cover).

# Operation

## Pressure Relief Procedure

### WARNING



#### INJECTION HAZARD

The system pressure must be manually relieved to prevent the system from starting or spraying accidentally. Fluid under high pressure can be injected through the skin and cause serious injury. To reduce the risk of an injury from injection, splashing fluid, or moving parts, follow the **Pressure Relief Procedure** whenever you:

- are instructed to relieve the pressure,
- stop spraying for more than 10 minutes,
- check or service any of the system equipment,
- or install or clean the spray nozzle.

## Pressure Relief Procedure

1. Engage the trigger safety latch.
2. Turn the sprayer off.
3. Remove the ignition cable from the spark plug.
4. Shut off the water supply.
5. Disengage the trigger safety latch and trigger the gun to relieve pressure, and then engage the trigger safety latch again.
6. *If you suspect that the spray tip or hose is completely clogged, or that pressure has not been fully relieved after following the steps above:* Disengage the trigger safety latch and trigger the gun to relieve pressure. Wrap a rag around the hose end coupling and VERY SLOWLY loosen the coupling to relieve pressure gradually, then loosen completely. Now clear the tip or hose.

## Startup

Always use this start-up procedure to ensure that the unit is started safely and properly.

1. Check oil levels:

**NOTE:** All units are equipped with a low-oil sensor that shuts the engine off if the oil level falls below a certain level. If the unit stops unexpectedly, check both the oil and the fuel levels. Check the oil level each time the unit is refueled.

2. Check fuel level.

### WARNING



#### FIRE HAZARD

Do not refuel a hot engine. Refueling a hot engine could cause a fire. Use only fresh, clean regular or unleaded gasoline. Close the fuel shutoff valve during refueling.

### CAUTION

Never run the unit dry. Costly damage to the pump will result. Always be sure the water supply is completely turned on before operating.

3. Turn on the water supply.

# Operation

4. Trigger the gun until water sprays from the tip indicating that the air is purged from the system.
5. Open the fuel shutoff valve. Be sure the spark plug ignition cable is pushed firmly onto the spark plug. Put the switch in the “on” position and put the throttle in the “run” position.

## CAUTION

Do not allow the pressure washer to idle for more than 10 minutes. Doing so may cause the recirculating water to overheat and seriously damage the pump. Turn off the pressure washer if it will not be spraying or cleaning at least every 10 minutes. If heated inlet water is used, reduce this time further. Do not operate the pressure washer with the inlet water screen removed. This screen helps keep abrasive sediment out of the pump, which could clog the pump or damage the cylinders. Keep this screen clean. Do not pump caustic materials; such materials may corrode the pump components.

## CAUTION

Do not allow the starter rope to snap back against the engine. Return it gently to prevent damage to the recoil.

6. Start the engine.

**NOTE:** For easier starting, have one person start the pressure washer while another person triggers the spray gun.

If the engine is cold, completely close the engine choke. Grasp the starter rope, brace one foot on the pressure washer chassis and pull rope rapidly and firmly. Continue holding the rope as it returns. Pull and return the rope until the engine starts. In cool weather, the choke may have to be kept closed for 10 to 30 seconds before opening it to keep the engine running. Otherwise, open the choke as soon as the engine starts.

If the engine is warm, leave the choke open, or just partly close it. Start the engine as described in the preceding paragraph. When it starts, be sure to open the choke completely.

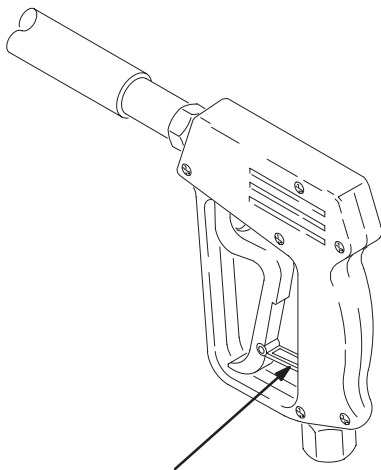
7. Always engage the gun's trigger safety latch whenever you stop spraying, even for a moment, to reduce the risk of fluid injection or splashing in the eyes or on the skin if the gun is bumped or triggered accidentally.
8. Always observe the following **CAUTIONS** to avoid costly damage to the pressure washer.
9. See the sandblaster kit manual for detailed cleaning information if this accessory is used.

# Operation

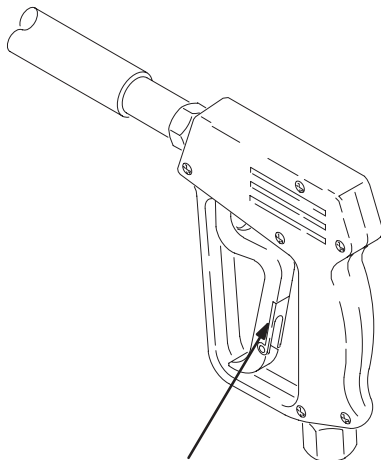
## Trigger Safety Latch

### **WARNING**

To reduce the risk of serious bodily injury, including fluid injection, splashing in the eyes or on the skin, always engage the trigger safety latch whenever spraying stops, even for a moment. In the engaged position, the trigger safety latch prevents the gun from being triggered accidentally by hand or if it is dropped or bumped. Be sure the latch is pushed fully down when engaging it or it cannot prevent the gun from being triggered. See Figure 2.



**TRIGGER SAFETY LATCH SHOWN ENGAGED**



**TRIGGER SAFETY LATCH SHOWN DISENGAGED**  
**Figure 2**

## Chemical Injector Operation

### **WARNING**

To reduce the risk of serious bodily injury, including fluid injection or splashing in the eyes or onto the skin, use extreme caution when changing spray tips. always follow the procedure below.

1. Follow the **Pressure Relief Procedure**.
2. Insert the chemical filter (attached with clear tubing to the chemical injector) into the container of chemical.
3. Install the black large orifice chemical tip (see **Installing and Changing Tips**).

This causes a drop in pressure that actuates the chemical injector. Changing back to a small diameter spray tip deactivates the chemical injector and produces high pressure for rinsing. The chemical filter can be left in the chemical container during high pressure use. The flow rate of the chemical may be regulated by turning the chemical adjustment knob on the injector. Maximum chemical flow is a full two turns counter-clockwise from the closed (clockwise) position.

04612

# Operation

## Installing and Changing Spray Tips

### **WARNING**

To reduce the risk of serious bodily injury, including fluid injection or splashing in the eyes or onto the skin, use extreme caution when changing spray tips. always follow the procedure below.

1. Follow the **Pressure Relief Procedure**.
2. Point the gun and wand away from yourself and anyone else.
3. Spray tips have a 4– or 5–digit number on them. The first two digits are the spray angle. Select the spray tip appropriate for your application.

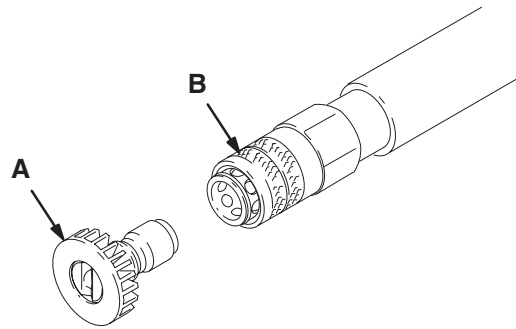
Spray Tip Number	Spray Pattern Fan Angle
00XXX	0°, blaster (red)
15XXX	15° (yellow)
25XXX	25° (green)
40XXX	40° (white)

**NOTE:** The chemical injector tip is brass, has a large opening and a black plastic cap.

4. Without holding your hand over the spray tip (A), pull back the quick coupler ring (B). Remove the current tip and/or install a different one, and then push back the ring. See Figure 3.
5. Pull on the tip to be sure the tip is secure before starting to spray again.
6. Tip holding holes are provided on the chassis.

### **CAUTION**

To avoid blowing the o-ring out of the quick coupler, due to the high pressure in the system, never operate the pressure washer without a tip securely mounted in the quick coupler.



**Figure 3**

04929



# Operation

## Shutdown, Flushing and Storage

**NOTE:** An anti-freeze flush kit 802327 is available to make flushing easier.

### CAUTION

If water does freeze in the pressure washer, thaw it in a warm room before trying to start it. Do not pour hot water on or into the pump; it may crack the ceramic plungers!

1. If the pressure washer will be exposed to freezing temperatures, drain all water out of the pump. If it must be stored in freezing temperatures, flush the unit with a 50% anti-freeze solution. Relieve pressure. Flush the pressure washer before using it again to remove the anti-freeze.
2. Before long-term (overnight) storage or transporting of unit, disconnect the water supply, and turn off the fuel supply valve.
3. After each use, wipe all surfaces of the pressure washer with a clean, damp cloth.
4. Perform the appropriate maintenance. See maintenance chart.

## Maintenance

Observing regular maintenance intervals helps ensure that you get maximum performance and life from the pressure washer.

There is a break-in period for the engine and pump. After changing the oil in these components following their respective break-in periods, the interval between required changes is longer.

If the unit is operating in dusty conditions, these maintenance checks should be made more often.

### WARNING

To reduce the risk of serious bodily injury, including fluid injection, splashing in the eyes or on the skin or injury from moving parts, always follow the **Pressure Relief Procedure** on page 5 before proceeding.

Interval	What to do
Daily	Clean water inlet screen and filter. Check engine and pump oil levels. Fill as necessary. Check gasoline level. Fill as necessary.
After first 5 hours of operation	Change engine break-in oil. Drain oil when warm. Use SAE 30 or 10W-30 detergent oil.
Each 25 hours of operation	Clean and remove air cleaner foam. Wash with water and detergent. Dry thoroughly. Rub with oil and squeeze to distribute oil.
After first 50 hours of operation	Change pump break-in oil. Use SAE 20 or 30 non-detergent oil.
Each 100 hours of operation or 3 months	Clean or replace paper air cleaner cartridge. Tap gently to remove dirt. Change engine oil. Use SAE 30 or 10W-30 detergent oil.
Each 500 hours of operation or 6 months	Change pump oil. Use SAE 20 or 30 non-detergent oil.

# Troubleshooting

## **WARNING**

To reduce the risk of serious injury, including fluid injection and splashing in the eyes, or on the skin, always follow **Pressure Relief Procedure** on page 5 before proceeding.

Problem	Cause	Solution
Engine will not start or is hard to start	No gasoline in fuel tank or carburetor.	Fill the tank with gasoline, open fuel shut off valve. Check fuel line and carburetor.
	Low oil.	Add to proper level.
	Start/Stop switch in Stop position.	Move switch to start position.
	Water in gasoline or old fuel.	Drain fuel tank and carburetor. Use new fuel and dry spark plug.
	Choked improperly. Flooded engine.	Open choke and pull engine several times to clear out gas. Use a dry spark plug.
	Dirty air cleaner filter.	Remove and clean.
	Spark plug dirty, wrong gap or wrong type.	Clean, adjust the gap or replace.
Engine misses or lacks power	Spray gun closed.	Trigger spray gun while spraying.
	Partially plugged air cleaner filter.	Remove and clean.
Low pressure and/or pump runs rough	Spark plug dirty, wrong gap or wrong plug type.	Clean, adjust the spark plug gap or replace.
	Worn or wrong size tip.	Replace with tip of proper size.
	Inlet filter clogged.	Clean. Check more frequently.
	Worn packings, abrasives in water or natural wear.	Check filter. Replace packings. See PUMP SERVICE, page 14.
	Inadequate water supply.	Check water flow rate to pump.
	Fouled or dirty inlet or discharge valves.	Clean inlet and discharge valve assemblies. Check filter.
	Restricted inlet.	Check garden hose, may be collapsed or kinked.
Water leakage from under pump manifold	Worn inlet or discharge valves.	Replace worn valves. See PUMP SERVICE, page 14.
	Leaking high pressure hose.	Replace high pressure hose.
Water on oil side of pump	Worn packings.	Install new packings. See PUMP SERVICE, page 14..
	Humid air condensing inside crankcase.	Change oil as specified in Maintenance, page 9.
	Worn packings.	Install new packings. See PUMP SERVICE, page 14.
	Oil seals leaking.	Install new oil seals. See PUMP SERVICE, page 14.

# Troubleshooting

Problem	Cause	Solution
Frequent or premature failure of the packings	Scored, damaged or worn plungers.	Install new plungers. See PUMP SERVICE, page 14.
	Abrasive material in the fluid being pumped.	Install proper filtration on pump inlet plumbing.
	Inlet water temperature too high.	Check water temperature; may not exceed 160°F(70°C).
	Overpressurizing pump.	Do not modify any factory-set adjustments. See EQUIPMENT MISUSE HAZARD on page 3.
	Excessive pressure due to partially plugged or damaged tip.	Clean or replace tip. See Installing and Changing Spray Tips on page 8.
	Pump running too long without spraying.	Never run pump more than 10 minutes without spraying.
	Running pump dry.	Do not run pump without water.
Strong surging at inlet and low pressure on discharge side	Foreign particles in the inlet or discharge valve or worn inlet and/or discharge valves.	Clean or replace valves. See PUMP SERVICE, page 14.

# 800740 & 804544 Pump Service

## WARNING

To reduce the risk of serious bodily injury, including fluid injection, splashing in the eyes or on the skin or injury from moving parts, always follow the **Pressure Relief Procedure** on page 5 before proceeding.

**NOTE:** The following metric wrenches are needed: 5 mm, 13 mm and 22 mm. Repair kits are available. Refer to the individual repair sections and the pump parts page for more details. For the best results, use all parts in the kits.

**NOTE:** There is a tool kit to aid in servicing the pump. Tool kit 800271 includes tools to aid in the removal of packing retainers.

### Valves

**NOTE:** For a set of six valves, order 801472.

1. Remove the hex plug from the manifold using a 22 mm socket.
2. Examine the o-ring under the hex plug and replace it if it is cut or distorted.
3. Remove the valve assembly from the cavity; the assembly may come apart.
4. Install the new valve. Install the o-ring and hex plug; torque to 33 ft-lb (45 N · m).

**NOTE:** Retorque the plug after 5 hours of operation.

### Pumping Section

1. Remove the eight capscrews and lockwashers from the manifold using a 5 mm wrench.

2. Carefully separate the manifold from the crankcase.

**NOTE:** It may be necessary to tap the manifold lightly with a soft mallet to loosen.

## CAUTION

Keep the manifold properly aligned with the ceramic plungers when removing to avoid damage to the plunger or seals.

3. Carefully examine each plunger for any scoring or cracking and replace as necessary.

### Servicing the Plungers

**NOTE:** Plunger repair kit 801474 is available to replace retainers, o-rings, washers and backup rings for three cylinders.

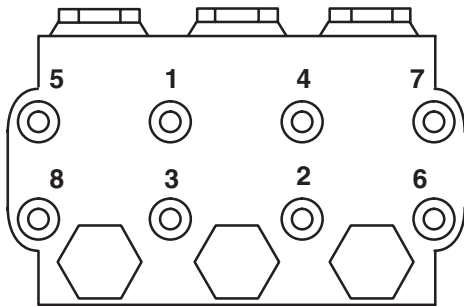
1. Loosen the plunger retaining nut five to six turns, using a 13 mm wrench. Push the plunger towards the crankcase to separate the plunger and retaining screw.
2. Remove the nut from the plunger and examine the o-ring, backup ring and copper bearing/gasket washer. Replace these parts, if necessary, using kit 801474.
3. Remove the plunger and flinger from the plunger shaft. Clean, examine and replace parts as necessary.
4. Inspect the plunger shaft for oil leakage from the crankcase. If leaking is obvious, replace the oil seals. Otherwise, **DO NOT** remove these seals as they cannot be reused. An oil seal kit is available to replace the seals.
5. Lightly grease the flinger and oil seal, if it is being replaced and replace them on the plunger shaft. Then install the plunger.

# 800740 & 804544 Pump Service

6. Lightly grease the retaining screw and the outer end of the plunger. Place the washer, o-ring and backup ring around the screw and install the nut through the plunger. Torque to 11 ft-lb (15 N · m).

**NOTE:** If you plan to replace the packings, refer to Servicing the V-Packings.

7. Lubricate the outside of each plunger. Slide the manifold onto the crankcase, being careful not to damage the seals.
8. Install the capscrews and washers finger-tight. Torque the screws to 8.8 ft-lb (12 N · m) following the tightening pattern (Figure 4). Uneven tightening may cause the manifold to bind or jam.



9278

**Figure 4**

## Servicing the V-Packings

**NOTE:** There are two types of packing kits: one is packings only, the other includes the packings, rings and retainers.

1. Remove the manifold as outlined in the Pumping Section.
2. Carefully pull the packing retainer from the manifold. Examine the o-ring and replace it if it is cut or damaged.
3. Remove the v-packing and head ring. Pull out the intermediate retainer ring. Remove the second v-packing and second head ring.
4. Inspect all parts and replace as necessary.
5. Thoroughly clean the packing cavities and examine for debris or damage.
6. Lightly grease the packing cavities and then replace the packings in the following order: head ring, v-packing, intermediate ring, head ring, v-packing and packing retainer with the o-ring installed in the retainer groove.

## **CAUTION**

Install the parts in the proper order and facing the correct direction. Improperly installed parts will cause a malfunction.

7. Reassemble the manifold as instructed in Servicing the Plungers.

# 804540 & 804559 Pump Service

## WARNING

To reduce the risk of serious bodily injury, including fluid injection, splashing in the eyes or on the skin or injury from moving parts, always follow the **Pressure Relief Procedure** on page 5 before proceeding.

**NOTE:** The following metric wrenches are needed: 6 mm, 13 mm and 27 mm. Repair kits are available. Refer to the individual repair sections and the pump parts page for more details. For the best results, use all parts in the kits.

**NOTE:** There is a tool kits to aid in servicing the pump. Tool kit 800271 includes tools to aid in the removal of packing retainers.

### Valves

**NOTE:** For a set of six valves, order P/N 801472.

1. Remove the hex plug from the manifold using a 27 mm socket.
2. Examine the o-ring under the hex plug and replace it if it is cut or distorted.
3. Remove the valve assembly from the cavity; the assembly may come apart.
4. Install the new valve. Install the o-ring and hex plug; torque to 73 ft-lb (99 N · m).

**NOTE:** Retorque the plug after 5 hours of operation.

### Pumping Section

1. Remove the eight capscrews and lockwashers from the manifold using a 6 mm wrench.

2. Carefully separate the manifold from the crankcase.

**NOTE:** It may be necessary to tap the manifold lightly with a soft mallet to loosen.

## CAUTION

Keep the manifold properly aligned with the ceramic plungers when removing to avoid damage to the plunger or seals.

3. Carefully examine each plunger for any scoring or cracking and replace as necessary.

### Servicing the Plungers

**NOTE:** Plunger repair kit 801474 is available to replace retainers, o-rings, washers and backup rings for three cylinders.

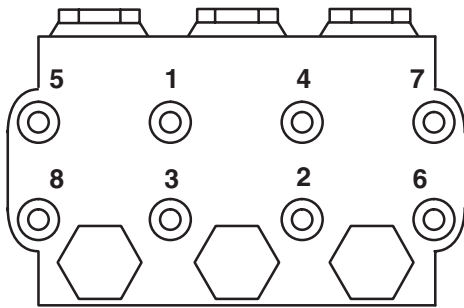
1. Loosen the plunger retaining nut five to six turns, using a 13 mm wrench. Push the plunger towards the crankcase to separate the plunger and retaining screw.
2. Remove the nut from the plunger and examine the o-ring, backup ring and copper bearing/gasket washer. Replace these parts, if necessary, using kit 801474.
3. Remove the plunger and flinger from the plunger shaft. Clean, examine and replace parts as necessary.
4. Inspect the plunger shaft for oil leakage from the crankcase. If leaking is obvious, replace the oil seals. Otherwise, **DO NOT** remove these seals as they cannot be reused. An oil seal kit is available to replace the seals.
5. Lightly grease the flinger and oil seal, if it is being replaced and replace them on the plunger shaft. Then install the plunger.

# 804540 & 804559 Pump Service

6. Lightly grease the retaining screw and the outer end of the plunger. Place the washer, o-ring and backup ring around the screw and install the nut through the plunger. Torque to 14.4 ft-lb (19.5 N·m).

**NOTE:** If you plan to replace the packings, refer to Servicing the V-Packings.

7. Lubricate the outside of each plunger. Slide the manifold onto the crankcase, being careful not to damage the seals.
8. Install the capscrews and washers finger-tight. Torque the screws to 22 ft-lb (30 N·m) following the tightening pattern (Fig. 4). Uneven tightening may cause the manifold to bind or jam.



9278

**Figure 4**

## Servicing the V-Packings

**NOTE:** There are two types of packing kits: one is packings only, the other includes the packings, rings and retainers.

1. Remove the manifold as outlined in the Pumping Section.
2. Carefully pull the packing retainer from the manifold. Examine the o-ring and replace it if it is cut or damaged.
3. Remove the v-packing and head ring. Pull out the intermediate retainer ring. Remove the second v-packing and second head ring.
4. Inspect all parts and replace as necessary.
5. Thoroughly clean the packing cavities and examine for debris or damage.
6. Lightly grease the packing cavities and then replace the packings in the following order: head ring, v-packing, intermediate ring, head ring, v-packing and packing retainer with the o-ring installed in the retainer groove.

## CAUTION

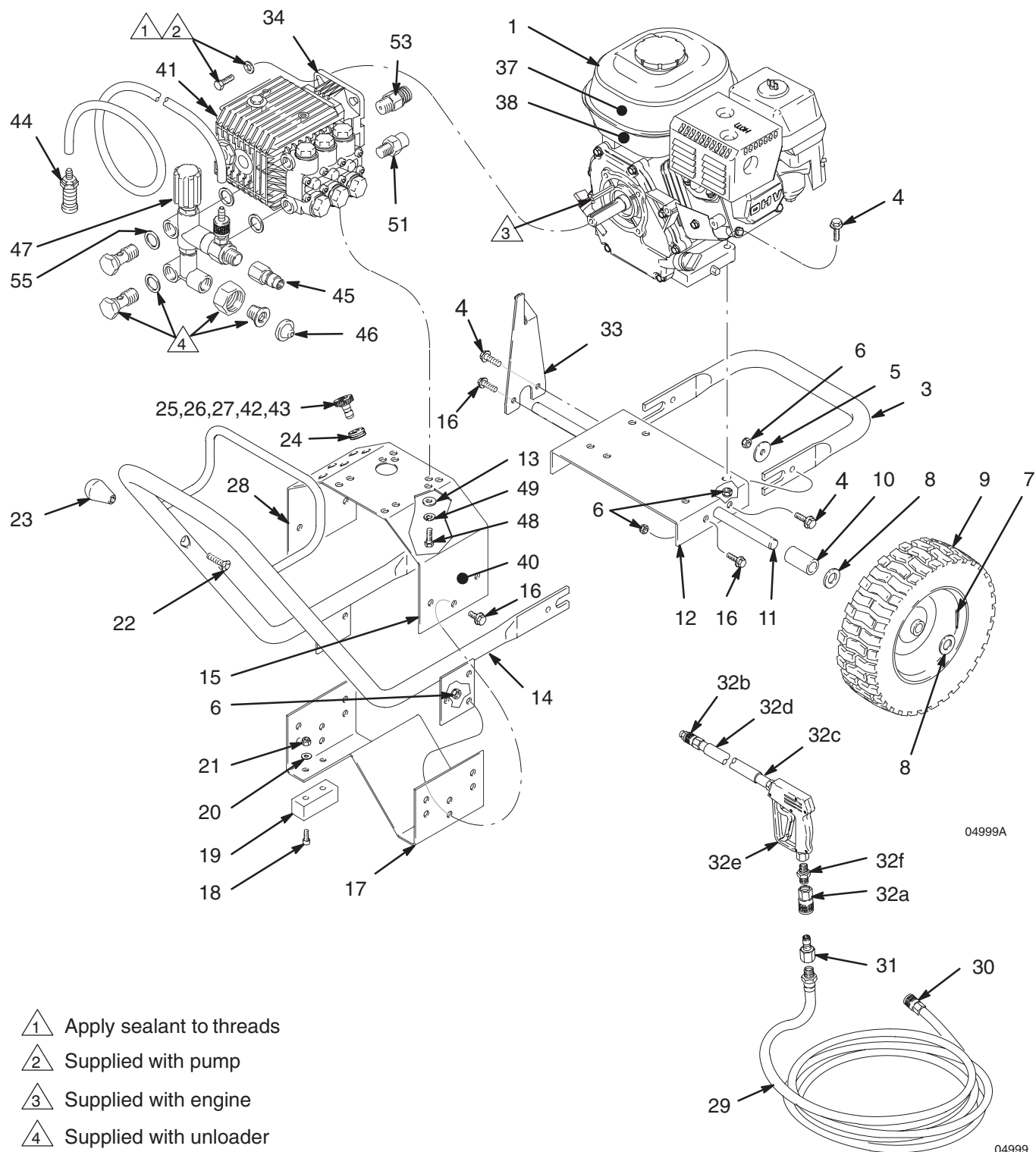
Install the parts in the proper order and facing the correct direction. Improperly installed parts will cause a malfunction.

7. Reassemble the manifold as instructed in Servicing the Plungers.

# Hydra-Clean 1535, 2030 Pressure Washer – Parts

Model 804506, Series A

Model 804532, Series A





# Hydra-Clean 1535, 2030 Pressure Washer – Parts

## USE ONLY GENUINE GRACO PARTS AND ACCESSORIES

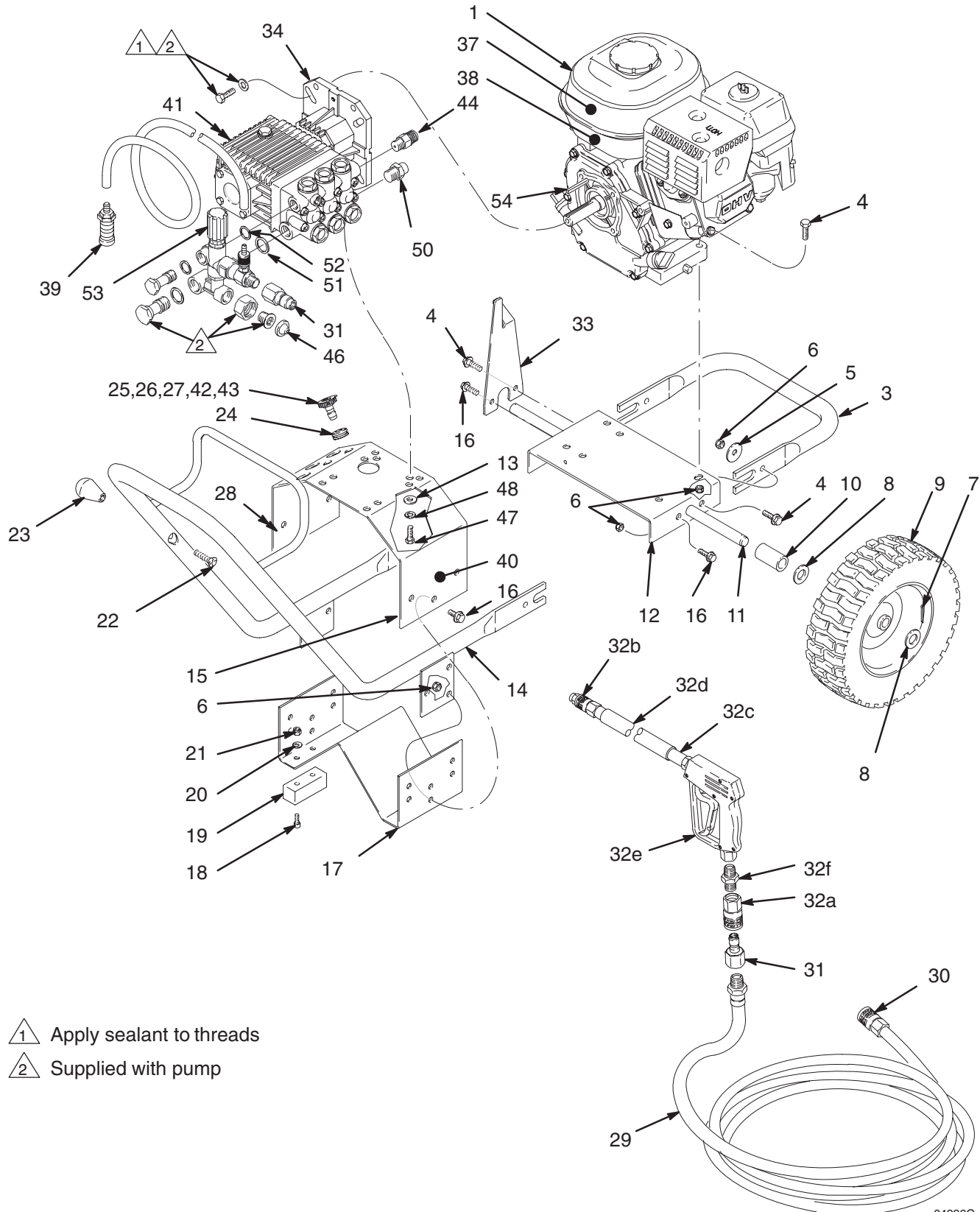
### Models 804506, Series A and 804532, Series A

Ref. No.	Part No.	Description	Qty.	Ref. No.	Part No.	Description	Qty.
1	802264	ENGINE, 5.5 hp	1	31	801568	QUICK COUPLER, 3/8 male	1
3	804510	HANDLE, lift	1	32	800392	GUN & WAND ASSEMBLY (includes 32a – 32f),	1
4	804533	SCREW, cap, flange, 5/16–18	6	32a	801569	· QUICK COUPLER, female 3/8	1
5	804523	WASHER, handle	2	32b	801009	· QUICK COUPLER, female 1/4	1
6	111040	NUT, Lock 5/16–18	14	32c	801134	· WAND, 32"	1
7	101545	PIN, cotter 1/8 dia. x 1"	2	32d	801674	· SLEEVE, 28"	1
8	154636	WASHER, plain, 1–3/16	4	32e	803350	· GUN, Spray <i>See Manual 308511</i>	1
9	804511	WHEEL, pneumatic	2	32f	801603	· NIPPLE, hex, 3/8 npt x 3/8 npt	1
10	804512	SPACER	2	33	804529	HOLDER, gun	1
11	804554	AXLE	1	34		PUMP ASSEMBLY (see page 22)	1
12	804516	PLATE, motor mounting	1		800740	Model 1535	1
13	100527	WASHER, plain	2		804544	Model 2030	1
14	804509	HANDLE	1	37	290130	LABEL	1
15	804514	PLATE, pump	1	38	802363	LABEL, caution	1
16	114412	SCREW, flange, hex hd.	8	40	290131	LABEL, warning	1
17	804515	PLATE, bottom	1	41	290133	LABEL	1
18	100643	SCREW, cap, sch, 14–20 x .75	4	42		TIP, spray	1
19	109059	PAD, rubber	2		805558	Model 1535, (40° - white), 40055	1
20	100086	WASHER, plain, 3/16	4		805546	Model 2030, (40° - white), 4004	1
21	102040	NUT, lock, hex, 1/4–20	4	43		TIP, spray, chemical injector	1
22	804530	SCREW, mach, flthd, 3/8–16	1		805634	Model 1535 (black)	1
23	108789	KNOB	1		805634	Model 2030 (black)	1
24	801012	GROMMET, rubber	6	44	803885	STRAINER	1
25		TIP, spray	1	45	803857	COUPLER, sst	1
	805555	Model 1535, (0° - red), 00055	1	46	801112	SCREEN	1
	805543	Model 2030, (0° - red), 0004	1	47		KIT, unloader/injector	1
26		TIP, spray	1		804542	Model 1535	1
	805556	Model 1535, (15° - yellow), 15055	1		804543	Model 2030	1
	805544	Model 2030, (15° - yellow), 1504	1	48	801210	SCREW	2
27		TIP, spray	1	49	100214	WASHER, lock	2
	805557	Model 1535, (25° - green), 25055	1	51	800742	VALVE, thermal relief	1
	805545	Model 2030, (25° - green), 2504	1	53		VALVE, relief	1
28		LABEL	1		804534	Model 1535	1
	290139	Model 1535	1		804546	Model 2030	1
	290142	Model 2030	1	55	804570	GASKET	4
29	804479	HOSE, high pressure 3/8 x 50'	1				
30	801569	QUICK COUPLER, 3/8 female	1				

# Hydra-Clean 2540, 3040 Pressure Washer – Parts

Model 804507 Series A

Model 804508 Series A



# Hydra-Clean 2540, 3040 Pressure Washer – Parts

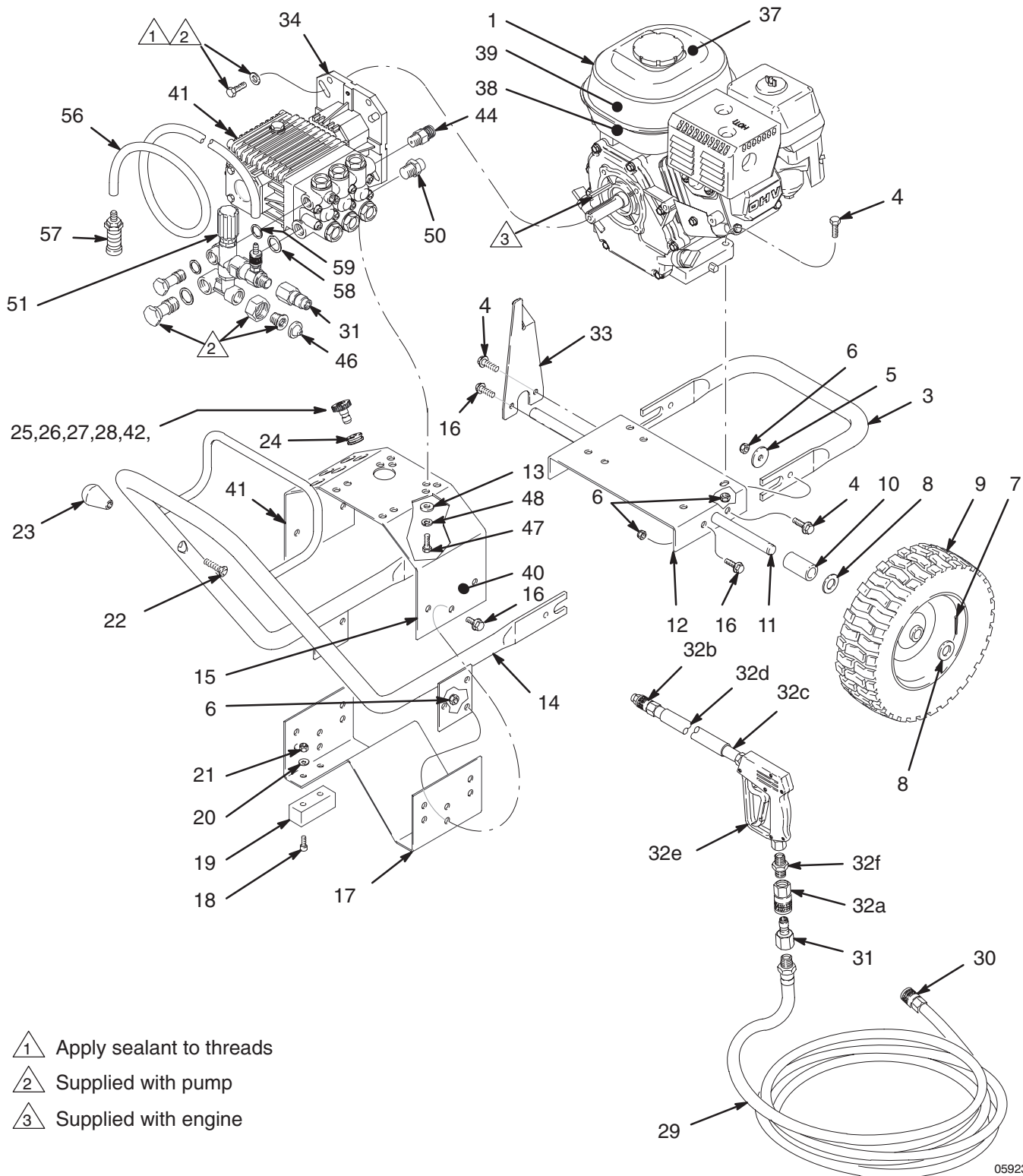
## USE ONLY GENUINE GRACO PARTS AND ACCESSORIES

### Models 804507, Series A and 804508, Series A

Ref. No.	Part No.	Description	Qty.	Ref. No.	Part No.	Description	Qty.
1	803900	ENGINE, 9 hp, model 2540	1	29	804479	HOSE, High Pressure 3/8 x 50'	1
	803158	ENGINE, 11 hp, model 3040	1	30	801569	QUICK COUPLER, 3/8 female	1
3	804510	HANDLE, lift	1	31	801568	QUICK COUPLER, Male 3/8	2
4	110837	SCREW, cap, flange, 5/16–18	6	32	800392	GUN & WAND ASSEMBLY	1
5	804523	WASHER, handle	2			(includes 32a – 32f), Model 1535	
6	111040	NUT, Lock 5/16–18	14	32a	801569	· QUICK COUPLER, Female 3/8	1
7	101545	PIN, cotter 1/8 dia. x 1"	2	32b	801009	· QUICK COUPLER, Female 1/4	1
8	154636	WASHER, plain, 1–3/16	4	32c	801134	· WAND, 32"	1
9	804511	WHEEL, Pneumatic	2	32d	801674	· SLEEVE, 28"	1
10	804512	SPACER	2	32e	803350	· GUN, Spray	1
11	804554	AXLE	1			<i>See Manual 308511</i>	
12	804516	PLATE, motor mounting	1	32f	801603	· NIPPLE, hex, 3/8 npt x 3/8 npt	1
13	100527	WASHER, Plain	4	33	804529	HOLDER, gun	1
14	804509	HANDLE	1	34	804540	PUMP ASSEMBLY (see page 24)	1
15	804514	PLATE, pump	1	37	290130	LABEL	1
16	114412	SCREW, Flange, Hex Hd.	8	38	802363	LABEL, caution	1
17	804515	PLATE, bottom	1	39	803885	STRAINER	1
18	100643	SCREW, cap, sch, 14–20 x .75	4	40	290131	LABEL, warning	1
19	109–059	PAD, rubber	2	41	290133	LABEL	1
20	100086	WASHER, plain, 3/16	4	42		TIP, spray	1
21	102040	NUT, lock, hex, 1/4–20	4		805554	Model 2540, (40° - white), 4005	1
22	804530	SCREW, mach, flthd, 3/8–16	1		805550	Model 3040, (40° - white), 40045	1
23	108789	KNOB	1	43		TIP, spray, chemical injector	1
24	801012	GROMMET, Rubber	6		805634	Model 2540 (black)	1
25		TIP, spray	1		805634	Model 3040 (black)	1
	805551	Model 2540, (0° - red), 0005	1	44	804547	KIT, repl, relief valve	1
	805547	Model 3040, (0° - red), 00045	1	46	804051	SCREEN	1
26		TIP, spray	1	47	801210	SCREW	4
	805552	Model 2540, (15° - yellow), 1505	1	48	100214	WASHER, lock	4
	805548	Model 3040, (15° - yellow), 15045	1	50	804397	VALVE, thermal relief	1
27		TIP, spray	1	51	804569	GASKET, unloader	1
	805553	Model 2540, (25° - green), 2505	1	52	804570	GASKET	1
	805549	Model 3040, (25° - green), 25045	1	53		UNLOADER/INJECTOR	1
28		LABEL	1		804527	Model 2540	1
	290140	Model 2540	1		804528	Model 3040	1
	290141	Model 3040	1	54	801137	KEY, square	1

# Hydra-Clean 2835 Pressure Washer – Parts

Model 804583, Series A



05923A

# Hydra-Clean 2835 Pressure Washer – Parts

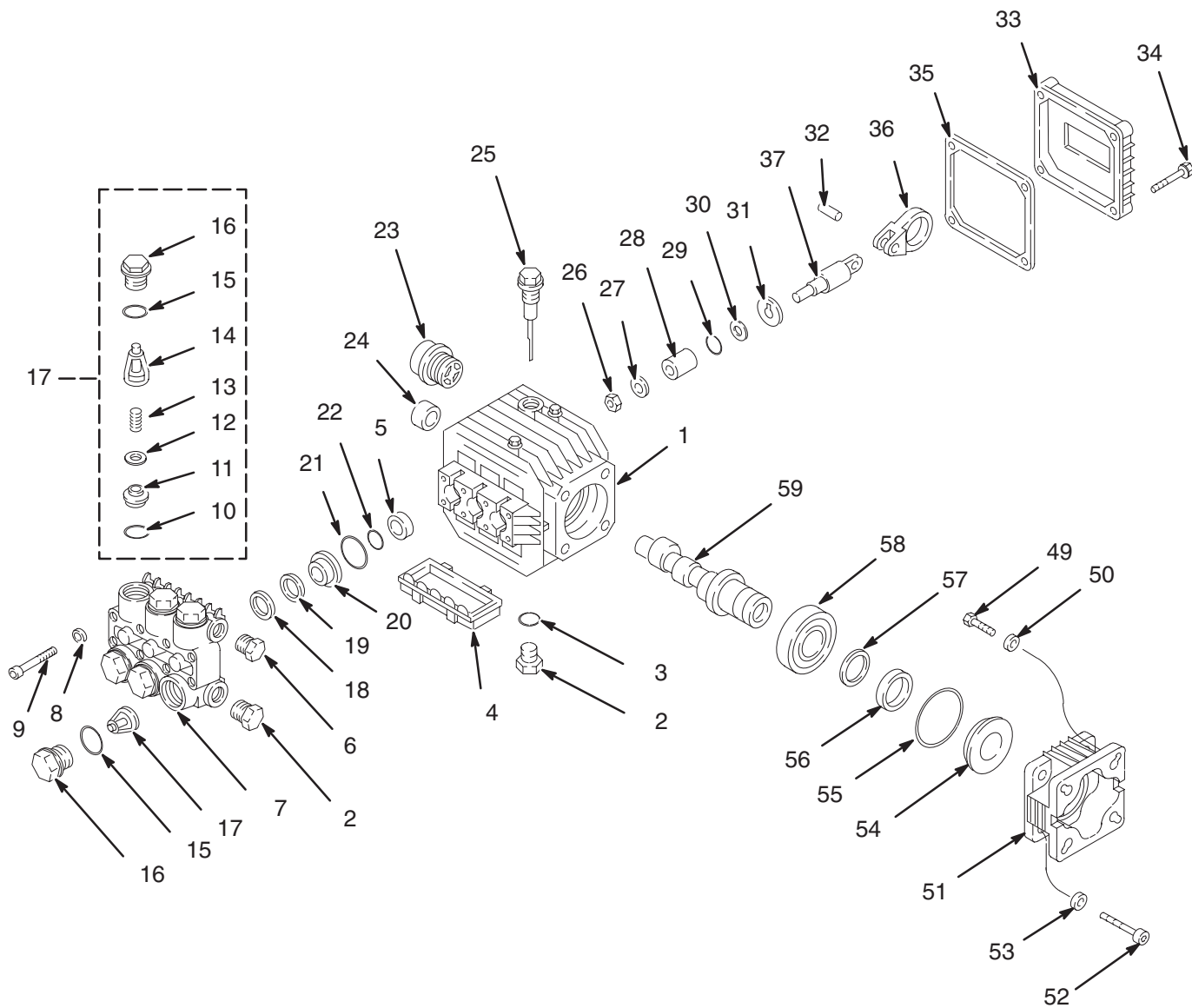
## USE ONLY GENUINE GRACO PARTS AND ACCESSORIES

### Model 804583, Series A

Ref. No.	Part No.	Description	Qty.	Ref. No.	Part No.	Description	Qty.
1	803900	ENGINE, 9 hp	1	31	801568	QUICK COUPLER, Male 3/8	2
3	804510	HANDLE, lift	1	32	800392	GUN & WAND ASSEMBLY (includes 32a – 32f), Model 1535	1
4	110837	SCREW, cap, flange, 5/16–18	6	32a	801569	· QUICK COUPLER, Female 3/8	1
5	804523	WASHER, handle	2	32b	801009	· QUICK COUPLER, Female 1/4	1
6	111040	NUT, Lock 5/16–18	14	32c	801134	· WAND, 32"	1
7	101545	PIN, cotter 1/8 dia. x 1"	2	32d	801674	· SLEEVE, 28"	1
8	154636	WASHER, plain, 1–3/16	4	32e	803350	· GUN, Spray (see Inst. Manual 308511)	1
9	804511	WHEEL, Pneumatic	2	32f	801603	· NIPPLE, hex, 3/8 npt x 3/8 npt	1
10	804512	SPACER	2	33	804529	HOLDER, gun	1
11	804554	AXLE	1	34	804559	PUMP ASSEMBLY (see page 24)	1
12	804516	PLATE, motor mounting	1	37	290013	LABEL	1
13	100527	WASHER, Plain	4	38	802363	LABEL, caution	1
14	804509	HANDLE	1	39	820137	LABEL	1
15	804514	PLATE, pump	1	40	290131	LABEL, warning	1
16	114412	SCREW, Flange, Hex Hd.	8	41	290557	LABEL	1
17	804515	PLATE, bottom	1	42	805634	TIP, spray, chemical injector	1
18	100643	SCREW, cap, sch, 14–20 x .75	4	44	804536	VALVE, relief	1
19	109059	PAD, rubber	2	46	804051	SCREEN	1
20	100086	WASHER, plain, 3/16	4	47	801210	SCREW	4
21	102040	NUT, lock, hex, 1/4–20	4	48	100214	WASHER, lock	4
22	804530	SCREW, mach, flthd, 3/8–16	1	50	804397	VALVE, thermal relief	1
23	108789	KNOB	1	51	804567	KIT, unloader/injector	1
24	801012	GROMMET, Rubber	6	56	804275	TUBE, chemical	1
25	805543	TIP, spray, (0° - red), 0004	1	57	801683	STRAINER	1
26	805544	TIP, spray, (15° - yellow), 1504	1	58	804569	GASKET, unloader	1
27	805545	TIP, spray, (25° - green), 2504	1	59	804570	GASKET	1
28	805546	TIP, spray, (40° - white), 4004	1				
29	804479	HOSE, High Pressure 3/8 x 50'	1				
30	801569	QUICK COUPLER, 3/8 female	1				

# Pump Assembly – Parts

Models 800740 and 804544



05001

# Pump Assembly – Parts

USE ONLY GENUINE GRACO PARTS AND ACCESSORIES

Models 800740 and 804544

REF NO.	PART NO.	DESCRIPTION	QTY	REF NO.	PART NO.	DESCRIPTION	QTY
1	804008	CRANKCASE	1	25	801659	DIPSTICK	1
2	801484	PLUG	2	26	803920	NUT	3
3	802344	O-RING	1	27	803921	WASHER	3
4	804014	PROTECTOR	1	28	804011	PLUNGER	3
5	KIT 83	SEAL, Oil		29	803918	O-RING	3
6	801753	PLUG	1	30	803919	RING, Back Up	3
7	804400	MANIFOLD	1	31	803922	WASHER, Flinger	3
8	803278	WASHER	8	32	804026	PIN, Connecting Rod	3
9	804027	SCREW	8	33	804013	COVER, Crankcase	1
10	KIT 1	O-RING		34	803651	SCREW	4
11	KIT 1	SEAT, Valve		35	804015	GASKET, Cover	1
12	KIT 1	PLATE, Valve		36	804010	END, Connecting Rod	3
13	KIT 1	SPRING		37	804012	ROD, Connecting	3
14	KIT 1	CAGE, Valve		49	804028	SCREW	4
15	KIT 84	O-RING		50	801652	WASHER	4
16	KIT 84	CAP, Valve		51	803999	FLANGE	1
17	KIT 1	VALVE ASSEMBLY		52	803651	SCREW	4
18	KIT 96,97	RING, Head		53	804025	WASHER	4
19	KIT 96,97	PACKING		54	803281	SPACER	1
20	KIT 96	RETAINER, Packing		55	803268	O-RING	1
21	KIT 96,97	O-RING		56	804018	SEAL, Oil	1
22	KIT 96,97	O-RING		57	804017	RING, Snap	1
23	802345	GAUGE, Sight	1	58	804022	BEARING	1
24	804021	BEARING	1	59	804401	CRANKSHAFT	1

Kit No.	Repair Kit Part No.	Ref No.	Description	Qty.	Entire Pump	One Cyl
1	801-472 Valve Assembly	10 11 12 13 14 or 17*	O-RING SEAT, Valve PLATE, Valve SPRING CAGE, Valve VALVE ASSEMBLY	6 6 6 6 6 6	**	
83	804-033 Oil Seal	5	SEAL, Oil	3	**	
84	804-034 Valve Cap	15 16	O-RING CAP, Valve	6 6	**	
96	804-036 Packing Assembly	18 19 20 21 22	RING, Head PACKING RETAINER, Packing O-RING O-RING	1 1 1 1 1		**
97	804-037 Packing	18 19 21 22	RING, Head PACKING O-RING O-RING	3 3 3 3	**	

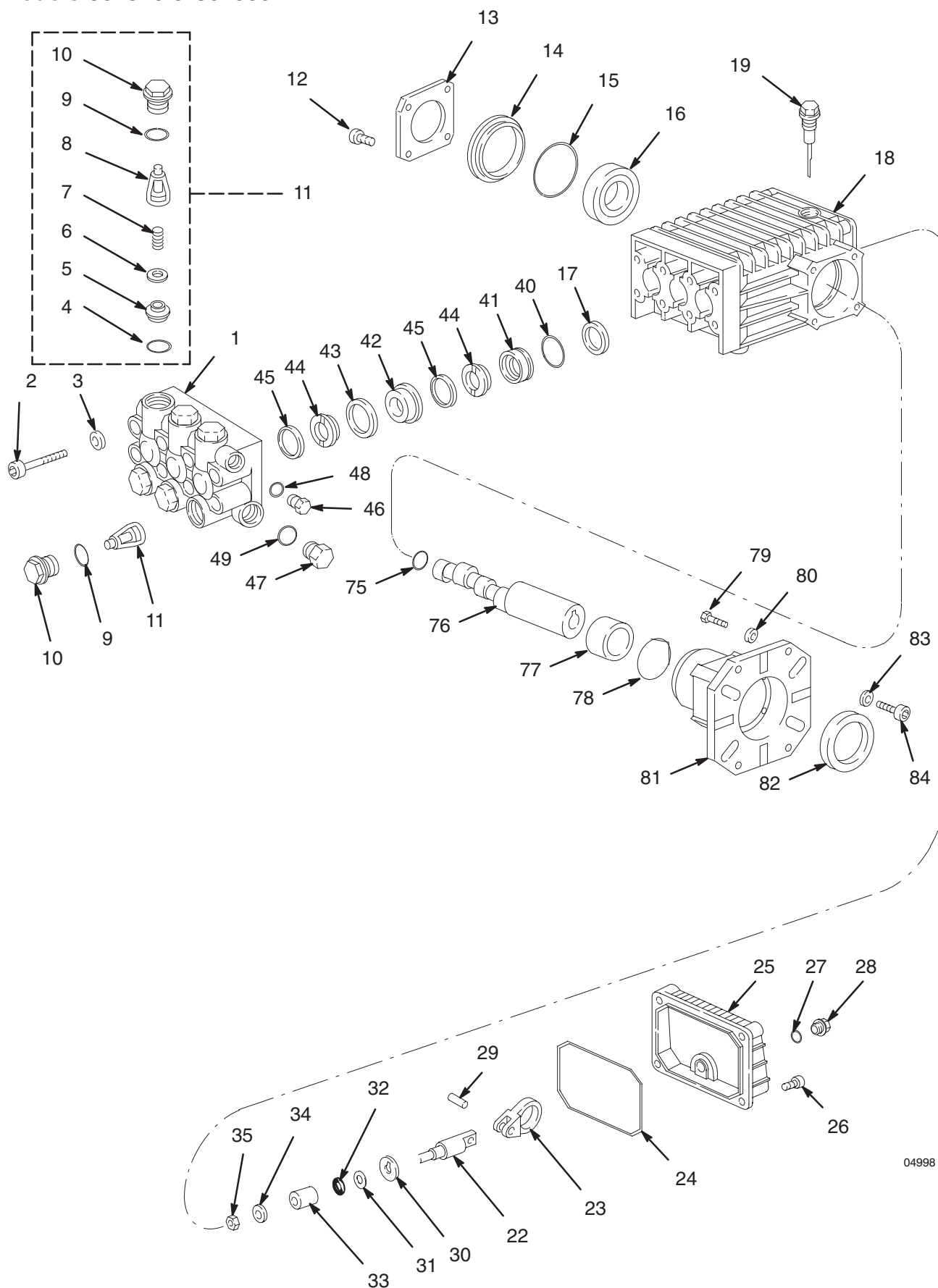
\* Item 17 consists of items 10 through 14. See Pump Assembly illustration on previous page.

\*\* Designates whether kit contains parts for entire pump or for only one cylinder.



# Pump Assembly – Parts

Models 804540 & 804559



04998



# Pump Assembly – Parts

USE ONLY GENUINE GRACO PARTS AND ACCESSORIES

Models 804540 & 804559

REF NO.	PART NO.	DESCRIPTION	QTY	REF NO.	PART NO.	DESCRIPTION	QTY
1		HEAD, Pump	1	30		WASHER	3
2	801651	SCREW	8	31	803919	RING, Anti-Extrusion	3
3	801652	WASHER	8	32	803918	O-RING	3
4	KIT 123	O-RING		33	804415	PISTON	3
5	KIT 123	SEAT, Valve		34		WASHER	3
6	KIT 123	VALVE		35		NUT	3
7	KIT 123	SPRING		40	KIT 130	O-RING	
8	KIT 123	CAGE, Valve		41	KIT 130	RETAINER, Packing	
9	KIT 124	O-RING		42	KIT 130	RING, Intermediate	
10	KIT 124	CAP		43	KIT 130	PACKING	
11	KIT 123	VALVE ASSEMBLY		44	KIT 130	PACKING	
12		SCREW	8	45	KIT 130	RING, Head	
13		COVER, Bearing	2	46		SCREW, Cap	1
14		SPACER	1	47	801482	SCREW, Cap	1
15	803268	O-RING	1	48	801485	WASHER	1
16		BEARING	2	49		WASHER	1
17	KIT 23	SEAL, Oil		75		RING, Retaining	1
18		CRANKCASE	1	76		CRANKSHAFT	1
19	801659	DIPSTICK	1	77		BEARING	1
22		GUIDE, Piston	3	78		O-RING	1
23		ROD, Connecting	3	79		SCREW	4
24		O-RING	1	80		WASHER	4
25		COVER, Rear	1	81		FLANGE	1
26		SCREW	5	82	804422	SEAL, Oil	1
27	801488	O-RING	1	83		WASHER	4
28		SCREW, Cap	1	84		SCREW	4
29		PIN	3				

Kit No.	Repair Kit Part No.	Ref. No.	Description	Qty.	Entire Pump	One Cyl
23	801-658 Oil Seal	17	SEAL, Oil	3	**	
123	804-402 Valve Assembly	4 5 6 7 8 or 11*	O-RING SEAT, Valve VALVE SPRING CAGE, Valve VALVE ASSEMBLY	6 6 6 6 6 6	**	
124	804-403 Valve Cap	9 10	O-RING CAP	6 6	**	
130	804-404 Packing Assembly	40 41 42 43 44 45	O-RING RETAINER, Packing RING, Intermediate PACKING PACKING RING, Head	1 1 1 2 2		**

\* Item 11 consists of items 4 through 8. See Pump Assembly illustration on previous page.

\*\* Designates whether kit contains parts for entire pump or for only one cylinder.

[illegible]

# Accessories

## Water Sandblasting Kit 800120

For abrasive cleaning of stubborn dirt and paint.

Requires a spray tip which is not included in kit (1535 uses 805325, 2030 uses 805313, 2540 uses 805321, and 3040 uses 805317).

## Technical Data

	Model 804506	Model 804532	Model 804507	Model 804583	Model 804508
Engine (4 cycle, air cooled)	5.5 HP Honda OHV	5.5 HP Honda OHV	9 HP Honda OHV	9 HP Honda OHV	11 HP Honda OHV
Gasoline Tank Capacity	3.8 quarts (3.6 liter)	3.8 quarts (3.6 liter)	6.2 quarts (6.1 liter)	6.2 quarts (6.1 liter)	6.9 quarts (6.5 liter)
Water Pump Maximum Working Pressure	1500 psi (103 bar)	2000 psi (138 bar)	2500 psi (172 bar)	2800 psi (193 bar)	3000 psi (207 bar)
Water Pump Maximum Flow	3.5 gpm (13 lpm)	3 gpm (11 lpm)	4 gpm (15 lpm)	3.5 gpm (13 lpm)	4 gpm (15 lpm)
Inlet Hose Connection	3/4" garden hose (f)	3/4" garden hose (f)	3/4" garden hose (f)	3/4" garden hose (f)	3/4" garden hose (f)
Weight (without gun and hose)	79 lb (36 kg)	79 lb (36 kg)	110 lb (50 kg)	110 lb (50 kg)	128 lb (58 kg)
Dimensions					
Length	34.5" (940mm)	34.5" (914mm)	34.5" (914mm)	34.5" (914mm)	34.5" (914mm)
Width	22" (483mm)	22" (533mm)	22" (533mm)	22" (533mm)	22" (533mm)
Height	23.5" (508mm)	23.5" (572mm)	23.5" (572mm)	23.5" (572mm)	23.5" (572mm)
Maximum Inlet Water Temperature	160°F (70°C)	160°F (70°C)	160°F (70°C)	160°F (70°C)	160°F (70°C)
Sound Data in dB(A) Sound Pressure Sound Level	93.1 103.5	93.1 103.5	94.3 104.7	94.3 104.7	95.8 106.3
Wetted Parts High Pressure Hose Bypass Hose Pressure Washer (including fittings)	Acrylonitrile and Buna-N cover and tube Synthetic yarn and EPDM Anodized aluminum, Aluminum or bronze alloys, Brass Copper Buna-N, Cotton phenolic, 303, 304, and 316 Stainless steel, Polymide-12 thermoplastic, PTFE , Carbon steel, Zinc with or without yellow chromate plate PTFE				

# Graco Warranty

Graco warrants all equipment listed in this manual which is manufactured by Graco and bearing its name to be free from defects in material and workmanship on the date of sale by an authorized Graco distributor to the original purchaser for use. With the exception of any special extended or limited warranty published by Graco, Graco will, for a period of twelve months from the date of sale, repair or replace any part of the equipment determined by Graco to be defective. This warranty applies only when the equipment is installed, operated and maintained in accordance with Graco's written recommendations.

This warranty does not cover, and Graco shall not be liable for general wear and tear or any malfunction, damage or wear caused by faulty installation, misapplication, abrasion, corrosion, inadequate or improper maintenance, negligence, accident, tampering, or substitution of non-Graco component parts. Nor shall Graco be liable for malfunction, damage or wear caused by the incomplete or improper installation of Graco equipment with structures, accessories, equipment or materials not supplied by Graco, or the improper design, manufacture, installation, operation or maintenance of structures, accessories, equipment or materials not supplied by Graco.

This warranty is conditioned upon the prepaid return of the equipment claimed to be defective to an authorized Graco distributor for verification of the claimed defect. If the claimed defect is verified, Graco will repair or replace free of charge any defective parts. The equipment will be returned to the original purchaser transportation prepaid. If inspection of the equipment does not disclose a defect in material or workmanship, repairs will be made at a reasonable charge, which charges may include the costs of parts, labor and transportation.

Graco's sole obligation and buyer's sole remedy for any breach of warranty shall be as set forth above. The buyer agrees that no other remedy (including, but not limited to, incidental or consequential damages for lost profits, lost sales, injury to person or property, or any other incidental or consequential loss) shall be available. Any action for breach of warranty must be brought within two (2) years of the date of sale.

**GRACO MAKES NO WARRANTY, AND DISCLAIMS ALL IMPLIED WARRANTIES OF MERCHANTABILITY AND FITNESS FOR A PARTICULAR PURPOSE IN CONNECTION WITH ACCESSORIES, EQUIPMENT MATERIALS OR COMPONENTS SOLD BUT NOT MANUFACTURED BY GRACO.** These items sold, but not manufactured by Graco (such as electric motors, gas engines, switches, hose, etc.), are subject to the warranty of their manufacturer. Graco will provide purchaser with reasonable assistance in making any claim for breach of these warranties.

In no event will Graco be liable for indirect, incidental, special or consequential damages resulting from Graco supplying equipment hereunder, or the furnishing, performance, or use of any products or other goods sold hereto, whether due to a breach of contract, breach of warranty, the negligence of Graco, or otherwise.

## **FOR GRACO CANADA CUSTOMERS**

The parties acknowledge that they have required that the present document, as well as all documents, notices and legal proceedings entered into, given or instituted pursuant hereto or relating directly or indirectly hereto, be drawn up in English. Les parties reconnaissent avoir convenu que la rédaction du présent document sera en Anglais, ainsi que tous documents, avis et procédures judiciaires exécutés, donnés ou intentés à la suite de ou en rapport, directement ou indirectement, avec les procédures concernées.

## **ADDITIONAL WARRANTY COVERAGE**

Graco does provide extended warranty and wear warranty for products described in the "Graco Contractor Equipment Warranty Program".

# Graco Phone Number

**TO PLACE AN ORDER**, contact your Graco distributor, or call this number to identify the distributor closest to you:  
**1-800-690-2894 Toll Free**

*All written and visual data contained in this document reflects the latest product information available at the time of publication.  
Graco reserves the right to make changes at any time without notice.*

**Sales Offices:** Minneapolis, Detroit  
**Foreign Offices:** Belgium, Korea, Hong Kong, Japan

**GRACO INC. P.O. BOX 1441 MINNEAPOLIS, MN 55440-1441**

PRINTED IN U.S.A. 308572 May 1995, Revised May 1999