



## 237–796 Conversion Kit

### For 10:1 Ratio President® Pumps

This kit converts 10:1 President Pump, 205–647 or 206–078, to a single u-cup throat seal.

## Installation

1. Remove and discard packing nut (A), flat packing (B), backup washer (C), female gland (D), V-packings (E), and male gland (F). See Fig. 1. Refer to Manual 306–982.

### CAUTION

To avoid seal damage during installation, insert the seal at an angle as shown in Fig. 2, so that side A is below hole C. Then press side B down until the seal bottoms out.

2. Inspect and clean packing area, if necessary.
3. Install spacer (3) and seal (2) as shown in Fig. 2.
4. Install new packing nut (1). Thread down until it is tight. See Fig. 3. No additional adjustment is required.

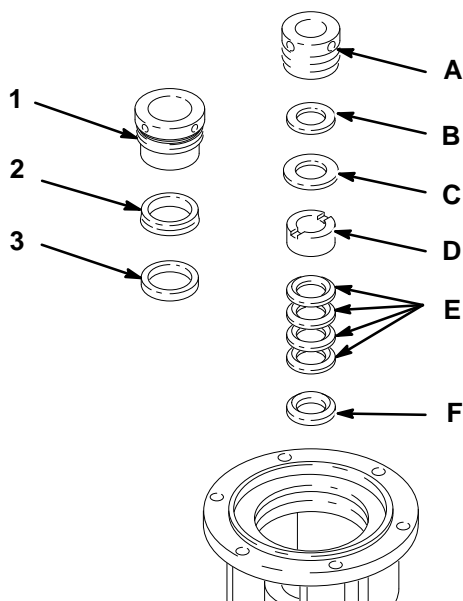


Fig. 1 05194

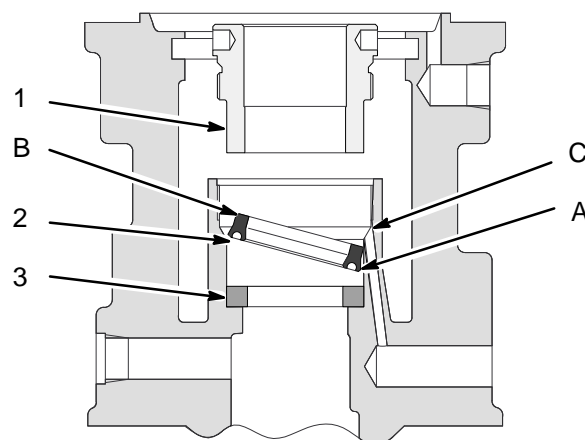


Fig. 2 Shows seal being installed. 05132

## Parts

Ref. No.	Part No.	Description	Qty.
1	190–249	NUT, packing	1
2	112–843	SEAL, polyurethane	1
3	190–495	SPACER	1

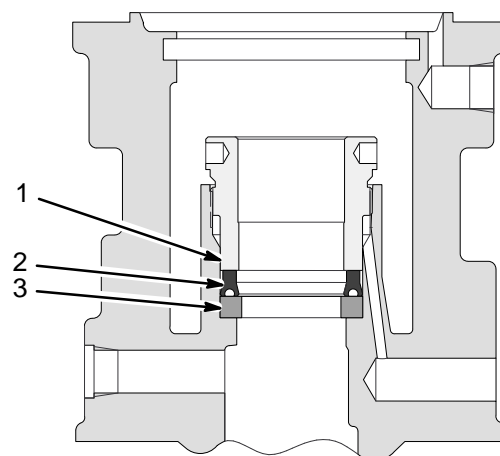


Fig. 3 Shows seal and nut installed. 05193

# Graco Phone Numbers

***TO PLACE AN ORDER***, contact your Graco distributor, or call this number to identify the distributor closest to you: **1-800-367-4023 Toll Free**

***FOR TECHNICAL ASSISTANCE***, service repair information or assistance regarding the application of Graco equipment: **1-800-543-0339 Toll Free**

**Sales Offices:** Atlanta, Chicago, Detroit, Los Angeles  
**Foreign Offices:** Belgium; Canada; England; Korea; Switzerland; France; Germany; Hong Kong; Japan

**GRACO INC. P.O. BOX 1441 MINNEAPOLIS, MN 55440-1441**

PRINTED IN U.S.A. 308-564 June 1995