

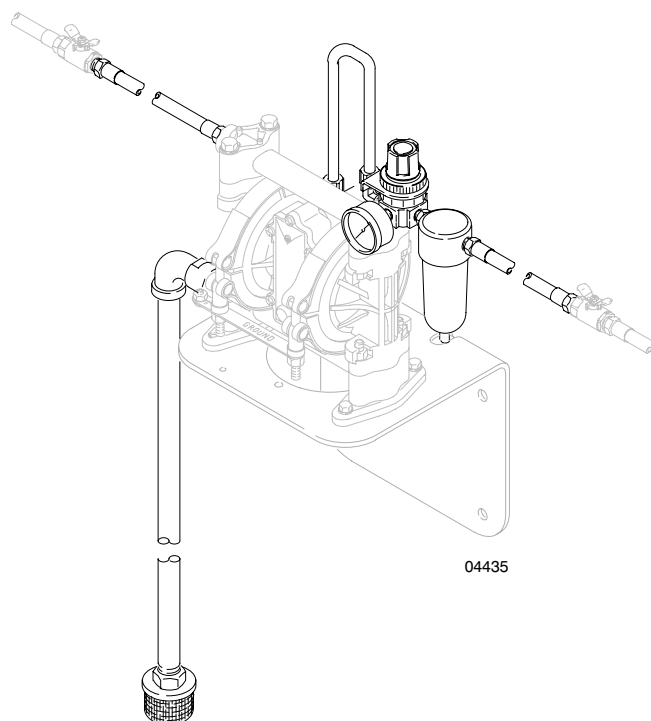
## FOR USE IN APPLICATIONS USING WINDSHIELD WASHER SOLVENT

# Air Regulator, Filter, and 55 Gallon Suction Kit

*100 psi (7 bar) Maximum Working Pressure*

### Model No. 237160, Series A

This kit is for use with a Graco Husky 307 pump (not included). See the Parts List for the contents.



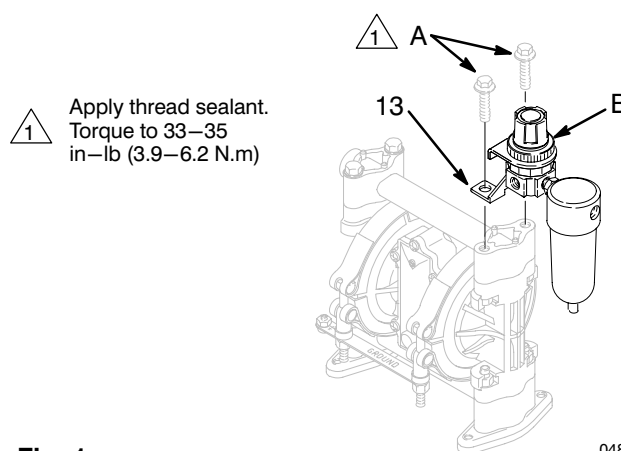
## ! WARNING



### EQUIPMENT MISUSE HAZARD

To reduce the risk of a serious injury from pressurized fluid, accidental spray from the gun, moving parts, electric shock or splashing fluid, read and follow the warnings and instructions in the separate pump instruction manual and any other manuals supplied with your system before operating the system.

## Installation

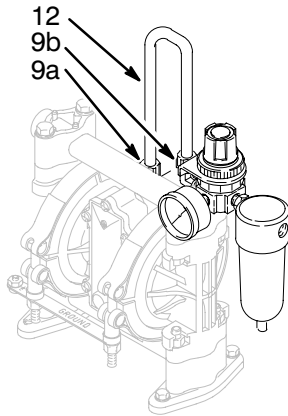


**Fig. 1**

1. Remove both screws (A) from the top of the pump. Secure the mounting bracket (13) of the regulator assembly (B) to the pump. See Fig. 1.

*Continued on the next page.*

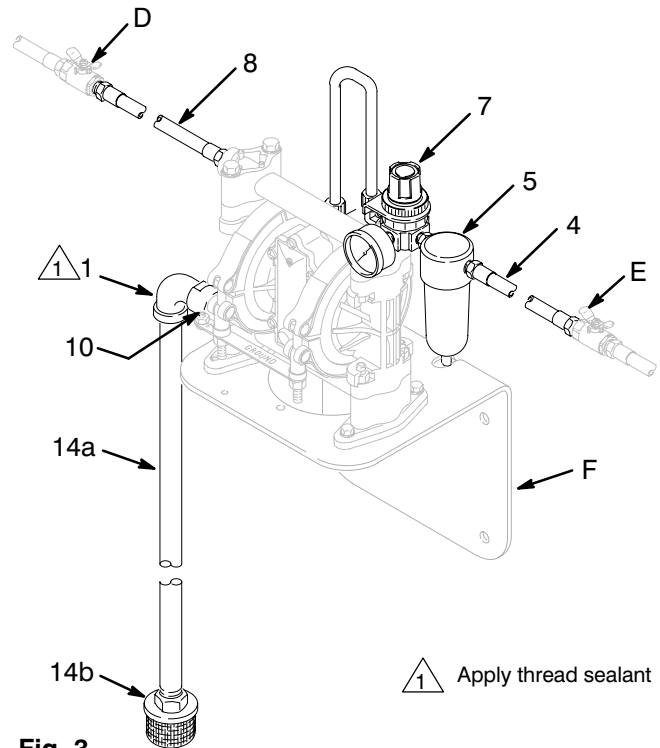
# Installation



**Fig. 2** 04833

2. Screw the loose air line fitting (9a) into the pump's air inlet. Rotate the fitting so the tube end faces up. Push each end of the tube (12) into one of the air line fittings. Tighten the nut on the fittings to secure the tube. See Fig. 2.
3. Mount the pump as desired, but be sure the suction hose kit (14) can reach the bottom of supply container. A wall bracket (F) is shown in Fig. 3.
4. Screw the adapter (10) into the pump inlet. Apply thread sealant to the male threads of the elbow (1). Screw the elbow into the adapter. Screw the suction hose kit (14) into the elbow (1). See Fig. 3.

5. Connect a fluid hose (8) and a fluid shutoff valve (D) at the outlet of the pump. See Fig. 3.
6. Connect an air hose (4) and a bleed-type air shut-off valve (E) at the inlet of the filter (5). See Fig. 3.



**Fig. 3**

# Operation

## ! WARNING



### PRESSURIZED EQUIPMENT HAZARD

The equipment remains pressurized until pressure is manually relieved. To reduce the risk of serious injury from pressurized fluid, accidental spray from the gun, moving parts, electric shock or splashing fluid, follow this procedure whenever you:

- are instructed to relieve pressure
- stop spraying
- check, clean or service system equipment
- install or change fluid nozzles

## Operation Procedure

1. Place the suction tube in the windshield washer fluid.
2. Close the fluid shutoff valve (D).
3. Turn on the air to the pump. Slowly open the air regulator until the pump is running smoothly.
4. When the pump stalls, open the fluid shutoff valve (D).
5. For additional operation information, pump maintenance, troubleshooting and repair, refer to the pump instruction manual, 307194.

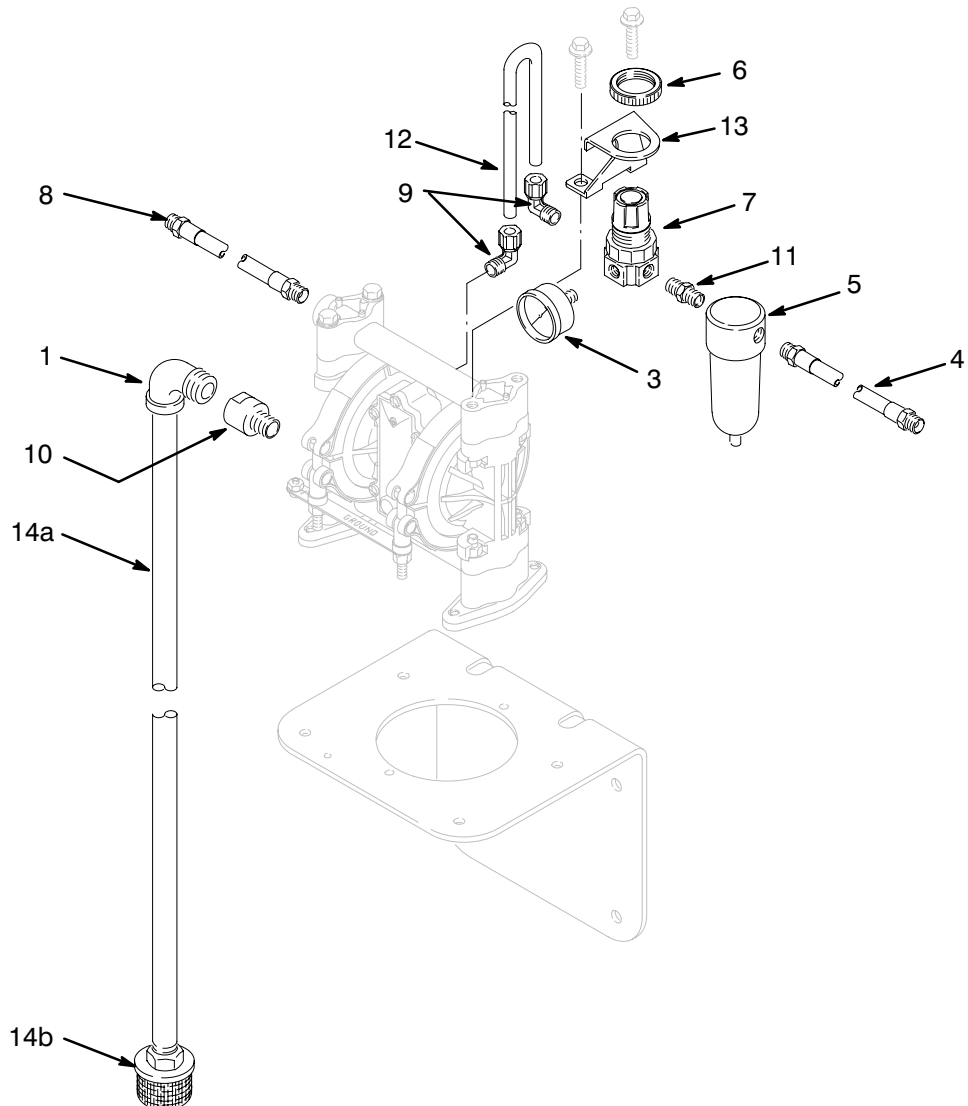
## Pressure Relief Procedure

1. Close the bleed-type air valve (E). See Fig. 3.
2. Close the air regulator (7). See Fig. 3.
3. Trigger or open the dispensing gun to relieve fluid pressure.

# Parts

## Kit No. 237160, Series A

Ref. No.	Part No.	Description	Qty.	Ref. No.	Part No.	Description	Qty.
1	100611	ELBOW, 1/2–14 npt(m) x 3/4–14 npt(f)	1	10	156022	ADAPTER, 3/8–18 npt(m) x 1/2–14 npt(f)	1
3	108190	AIR GAUGE, 0–100 psi (0–7 bar) range	1	11	156971	NIPPLE, 1/4–18 npt	1
4	109125	AIR HOSE, 6 feet (1829 mm) long, buna–N, coupled 1/4–18 npt (mbe)	1	12	187479	TUBE, 3/8 inch ID, 15 inch (381 mm) long	1
5	110146	AIR FILTER, 1 oz. bowl, 1/4 npt(f) inlet and outlet	1	13	190125	MOUNTING BRACKET	1
6	110209	REGULATOR NUT	1	14	223888	SUCTION HOSE KIT includes items 14a and 14b	1
7	110318	AIR REGULATOR, 1/4 npt	1	14a	110904	SUCTION HOSE, 6 feet (1829 mm) long, PVC, coupled 1/2–14 npt x 3/4–14 npt(mbe)	1
8	220596	FLUID HOSE, 4 feet (1219 mm) long, nitrile, coupled 3/8–18 npt x 1/2–14 npt(mbe)	1	14b	218798	STRAINER, 16 mesh, 304 stainless steel	1
9	111511	AIR LINE FITTING, 1/4–18 npt(m) x 3/8 inch OD tube	2				



04435

# The Graco Warranty and Disclaimers

## WARRANTY

Graco warrants all equipment manufactured by it and bearing its name to be free from defects in material and workmanship on the date of sale by an authorized Graco distributor to the original purchaser for use. As purchaser's sole remedy for breach of this warranty, Graco will, for a period of twelve months from the date of sale, repair or replace any part of the equipment proven defective. This warranty applies only when the equipment is installed, operated and maintained in accordance with Graco's written recommendations.

This warranty does not cover, and Graco shall not be liable for, any malfunction, damage or wear caused by faulty installation, misapplication, abrasion, corrosion, inadequate or improper maintenance, negligence, accident, tampering, or substitution of non-Graco component parts. Nor shall Graco be liable for malfunction, damage or wear caused by the incompatibility with Graco equipment of structures, accessories, equipment or materials not supplied by Graco, or the improper design, manufacture, installation, operation or maintenance of structures, accessories, equipment or materials not supplied by Graco.

This warranty is conditioned upon the prepaid return of the equipment claimed to be defective to an authorized Graco distributor for verification of the claim. If the claimed defect is verified, Graco will repair or replace free of charge any defective parts. The equipment will be returned to the original purchaser transportation prepaid. If inspection of the equipment does not disclose any defect in material or workmanship, repairs will be made at a reasonable charge, which charges may include the costs of parts, labor and transportation.

## DISCLAIMERS AND LIMITATIONS

The terms of this warranty constitute purchaser's sole and exclusive remedy and are in lieu of any other warranties (express or implied), **including warranty of merchantability or warranty of fitness for a particular purpose**, and of any non-contractual liabilities, including product liabilities, based on negligence or strict liability. Every form of liability for direct, special or consequential damages or loss is expressly excluded and denied. In no case shall Graco's liability exceed the amount of the purchase price. Any action for breach of warranty must be brought within two (2) years of the date of sale.

## EQUIPMENT NOT COVERED BY GRACO WARRANTY

Graco makes no warranty, and disclaims all implied **warranties of merchantability and fitness for a particular purpose**, with respect to accessories, equipment, materials, or components sold but not manufactured by Graco. These items sold, but not manufactured by Graco (such as electric motor, switches, hose, etc.) are subject to the warranty, if any, of their manufacturer. Graco will provide purchaser with reasonable assistance in making any claim for breach of these warranties.

## Phone Numbers

**TO PLACE AN ORDER**, contact your Graco distributor, or call one of the following numbers to identify the distributor closest to you:

**1-800-367-4023 Toll Free**

**612-623-6921**

**612-378-3505 Fax**

**Sales Offices:** Atlanta, Chicago, Detroit, Los Angeles

**Foreign Offices:** Belgium; Canada; England; Korea; Switzerland; France; Germany; Hong Kong; Japan

**GRACO INC. P.O. BOX 1441 MINNEAPOLIS, MN 55440-1441**

PRINTED IN U.S.A. 308426 February, 1995, Revised June 2002