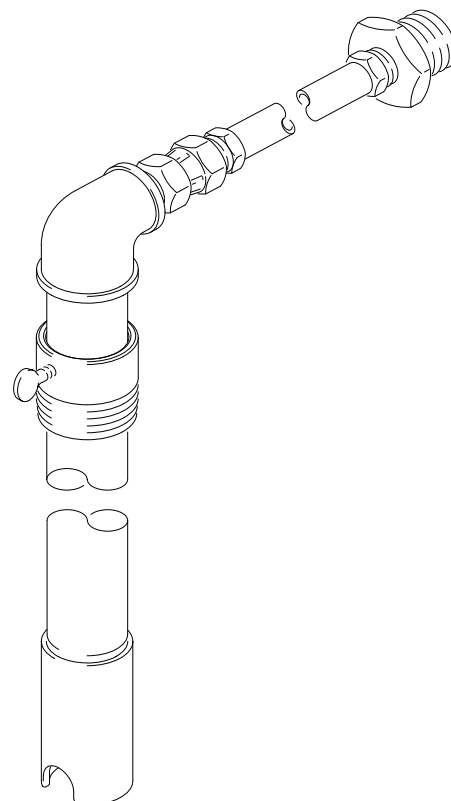


## Suction Kit

**Model 236—054**

Includes a bung-mounted suction tube.



04329

## Installation

### Installing the Suction Kit (See Fig 1)

**NOTE:** Apply thread sealant to all male threads, *except at swivel connections*, and be sure all connections are tightened securely to avoid leaking.

1. Remove the supply drum's bung hole plug.
2. Place the tube (7) into the bung hole opening and lower it into the drum until it rests on the bottom.
3. Thread the bung adapter (6) tightly into the bung hole, and tighten the adapter thumbscrew (1) against the suction tube.
4. Screw the pipe bushing (2) into the pump inlet adapter (A).
5. Connect one end of the hose (3) to the bushing (2).
6. Screw the union (4) tightly into the elbow (5).

7. *Without using thread sealant*, connect the other end of the hose (3) to the swivel of the union (4).

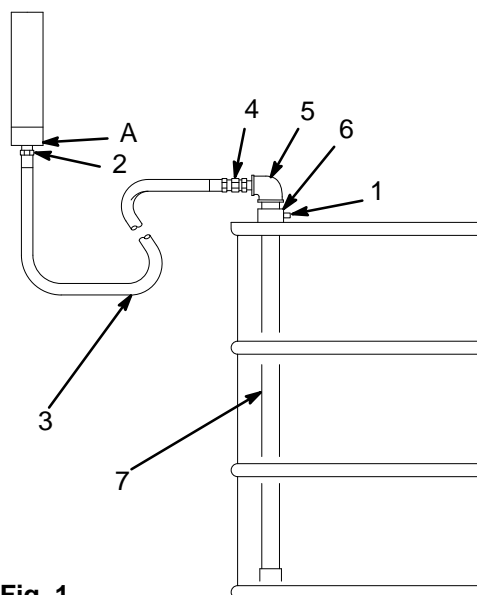
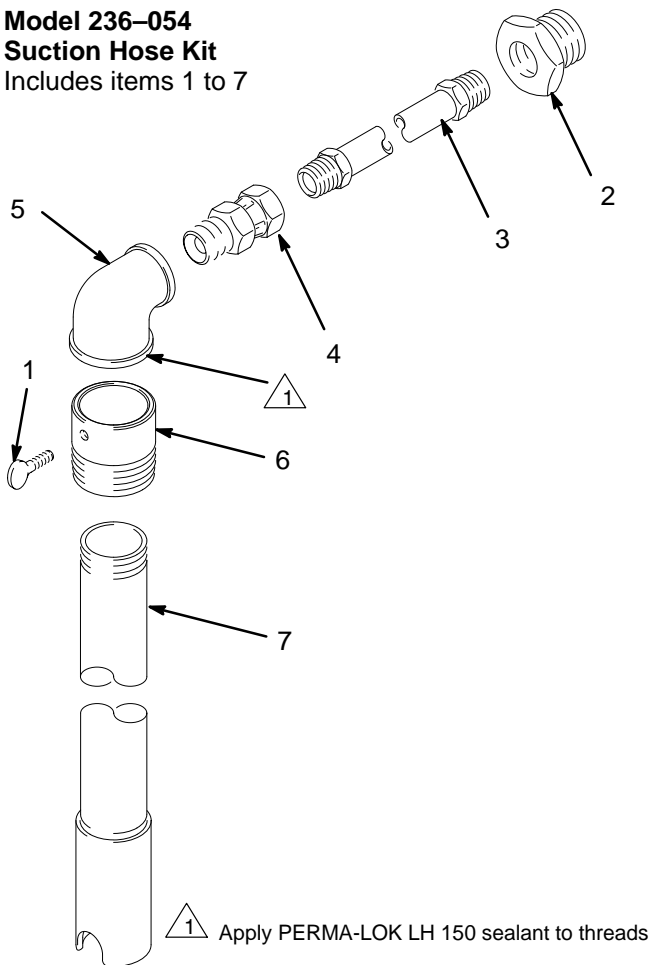


Fig. 1

04331

# Parts

## Model 236-054 Suction Hose Kit Includes items 1 to 7



Ref. No.	Part No.	Description	Qty.
1	100-220	THUMB SCREW; 5/16-18 x 1"	1
2	101-496	BUSHING, pipe	1
3	109-105	HOSE, coupled, 061-262, 6.0 ft	1
4	157-785	ADAPTER, straight union; 3/4 npt(m) x 3/4 npt(f) swivel	1
5	112-175	ELBOW, reducing	1
6	188-845	ADAPTER, bung	1
7	220-691	TUBE, drop	1

Fig. 2 04330

## Graco Phone Numbers

**TO PLACE AN ORDER**, contact your Graco distributor, or call this number to identify the distributor closest to you: **1-800-367-4023 Toll Free**

**FOR TECHNICAL ASSISTANCE**, service repair information or assistance regarding the application of Graco equipment: **1-800-543-0339 Toll Free**

**Sales Offices:** Atlanta, Chicago, Dallas, Detroit, Los Angeles, Mt. Arlington (N.J.)  
**Foreign Offices:** Canada; England; Korea; Switzerland; France; Germany; Hong Kong; Japan

**GRACO INC. P.O. BOX 1441 MINNEAPOLIS, MN 55440-1441**

PRINTED IN U.S.A. 308-335 4/94