



INSTRUCTIONS

This manual contains important warnings and information.
READ AND KEEP FOR REFERENCE.

First choice when quality counts.™

50:1 RATIO FALCON™

Grease Dispensing Pumps

5000 psi (34 MPa, 345 bar) Maximum Working Pressure

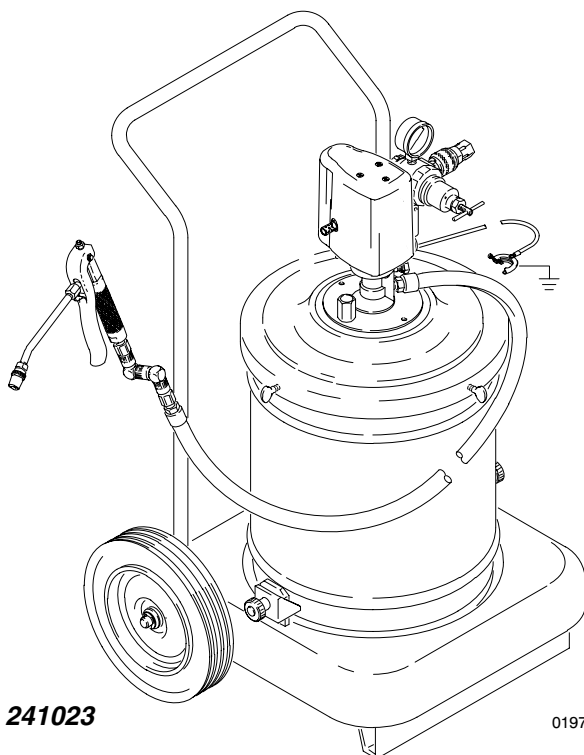
100 psi (0.7 MPa, 7 bar) Maximum Air Working Pressure

For dispensing heavy grease

See page 3 for model numbers.

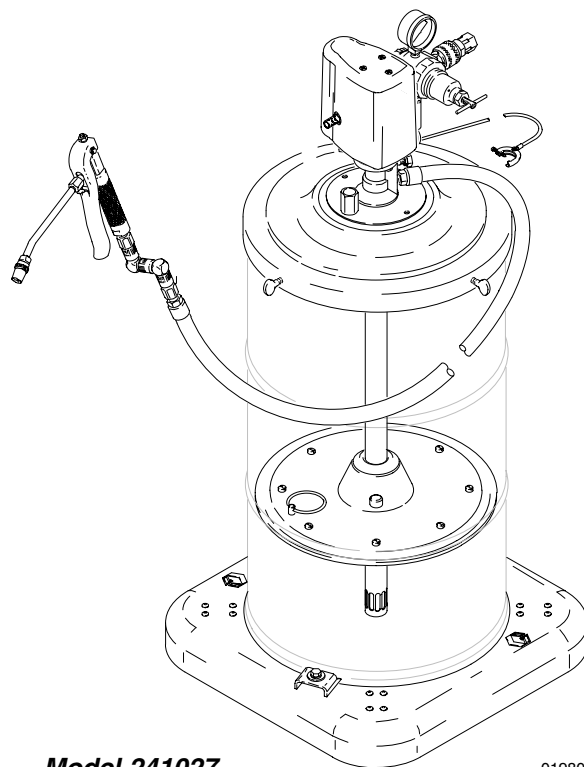
WARNING

These pumps are designed to be used only in pumping non-corrosive and non-abrasive lubricants and greases. Any other use of the pump can cause unsafe operating conditions and component rupture, which can result in fluid injection or other serious bodily injury, fire, or explosion.



Model 241023

01978B



Model 241027

01980C

Table of Contents

| | |
|---|----|
| Model Numbers | 3 |
| Safety Warnings | 4 |
| Operation/Service | 6 |
| Installation | |
| Grounding | 7 |
| Air Line Accessories | 7 |
| Pressure Relief Procedure | 7 |
| Using a Follow Plate | 8 |
| Flushing | 8 |
| Models 244082, 244084, 241030, 241033 | 9 |
| Models 244097, 244098, 244099, 244103, 241022, 241023, 241024, 241025 | 10 |
| Models 244100, 244101, 241027, 241028 | 11 |
| Models 244095, 244104, 241020, 241026 | 11 |
| Models 244102, 241029 | 12 |
| Models 244096, 241021 | 12 |
| Models 244083, 241031 | 13 |
| Parts Drawings and Lists | |
| Models 244095, 244104, | 14 |
| Models 244097, 241022 | 14 |
| Models 244096, 241021 | 15 |
| Truck 203650 | 15 |
| Models 244098, 241023 | 16 |
| Models 244101, 241028 | 16 |
| Models 244100, 241027 | 17 |
| Models 244082, 241030 | 18 |
| Dispense Kit 222383 | 18 |
| Models 244099, 244103, 241024, 241025 | 20 |
| Models 244084, 241033 | 20 |
| Models 244102, 241029 | 21 |
| Models 244083, 241031 | 22 |
| CE Installation Kit 240979 | 23 |
| Accessories | 23 |
| Technical Data | 23 |
| Graco Standard Warranty | 25 |
| Graco Phone Number | 25 |

Model Numbers

| Model No. | Size | Base Type | Dispense Kit | Cover | Follow Plate | Pail | CE Installation Kit 240979 |
|-----------|---------------------------|---------------|--------------|--------------|----------------|------|----------------------------|
| 244095 | 35 to 50 lb (16 to 23 kg) | | X | X | X | | |
| 241020 | 35 to 50 lb (16 to 23 kg) | | X | X | X | | X |
| 244096 | 35 to 50 lb (16 to 23 kg) | 2-wheel truck | X | pump support | inductor plate | | |
| 241021 | 35 to 50 lb (16 to 23 kg) | 2-wheel truck | X | pump support | inductor plate | | X |
| 244097 | 35 to 50 lb (16 to 23 kg) | | X | X | | X | |
| 241022 | 35 to 50 lb (16 to 23 kg) | | X | X | | X | X |
| 244098 | 35 to 50 lb (16 to 23 kg) | 2-wheel truck | X | X | | X | |
| 241023 | 35 to 50 lb (16 to 23 kg) | 2-wheel truck | X | X | | X | X |
| 244099 | 35 to 70 lb (16 to 32 kg) | portable | X | X | | X | |
| 241024 | 35 to 70 lb (16 to 32 kg) | portable | X | X | | X | X |
| 244103 | 35 to 70 lb (16 to 32 kg) | portable | X† | X | X | X | |
| 241025 | 35 to 70 lb (16 to 32 kg) | portable | X† | X | X | X | X |
| 244104 | 35 to 50 lb (16 to 23 kg) | | X† | X | X | | |
| 241026 | 35 to 50 lb (16 to 23 kg) | | X† | X | X | | X |
| 244100 | 120 lb (55 kg) | portable | X | X | X | | |
| 241027 | 120 lb (55 kg) | portable | X | X | X | | X |
| 244101 | 120 lb (55 kg) | 2-wheel truck | X | X | X | | |
| 241028 | 120 lb (55 kg) | 2-wheel truck | X | X | X | | X |
| 244102 | 120 lb (55 kg) | 2-wheel truck | X | X | X | | |
| 241029 | 120 lb (55 kg) | 2-wheel truck | X | X | X | | X |
| 244082 | 120 lb (55 kg) | | X | X | X | | |
| 241030 | 120 lb (55 kg) | | X | X | X | | X |
| 244083 | 120 lb (55 kg) | elevator | | pump support | | | |
| 241031 | 120 lb (55 kg) | elevator | | pump support | | | X |
| 244084 | 400 lb (180 kg) | | X | X | X | | |
| 241033 | 400 lb (180 kg) | | X | X | X | | X |

† Dispense valve, hose, and fittings are included as separate parts in this model.

Symbols

Warning Symbol



This symbol alerts you to the possibility of serious injury or death if you do not follow the instructions.

Caution Symbol



This symbol alerts you to the possibility of damage to or destruction of equipment if you do not follow the instructions.

WARNING



INSTRUCTIONS

EQUIPMENT MISUSE HAZARD

Equipment misuse can cause the equipment to rupture or malfunction and result in serious injury.

- This equipment is for professional use only.
- Read all instruction manuals, tags, and labels before operating the equipment.
- Use the equipment only for its intended purpose. If you are not sure, call your Graco distributor.
- Do not alter or modify this equipment.
- Check equipment daily. Repair or replace worn or damaged parts immediately.
- Do not exceed the maximum working pressure stated on the equipment or in the **Technical Data** for your equipment. Do not exceed the maximum working pressure of the lowest rated component in your system.
- Use fluids and solvents which are compatible with the equipment wetted parts. Refer to the **Technical Data** section of all equipment manuals. Read the fluid and solvent manufacturer's warnings.
- Handle hoses carefully. Do not pull on hoses to move equipment.
- Route hoses away from traffic areas, sharp edges, moving parts, and hot surfaces. Do not expose Graco hoses to temperatures above 66°C (150°F) or below -40°C (-40°F).
- Wear hearing protection when operating this equipment.
- Do not move or lift pressurized equipment.
- Comply with all applicable local, state, and national fire, electrical, and safety regulations.
- These pumps are designed to be used only in pumping non-corrosive and non-abrasive lubricants and greases. Any other use of the pump can cause unsafe operating conditions and component rupture, which can result in fluid injection or other serious injury, or fire or explosion.

WARNING



INJECTION HAZARD

Fluid dispensed from the valve, leaks or ruptured components can inject fluid into your body and cause extremely serious injury, including the need for amputation. Fluid splashed in the eyes or on the skin can also cause serious injury.

- Fluid injected into the skin might look like just a cut, but it is a serious injury. Get immediate medical attention.
- Do not point the valve at anyone or at any part of the body.
- Do not put your hand or fingers over the spray nozzle.
- Do not stop or deflect leaks with your hand, body, glove or rag.
- Do not “blow back” fluid; this is not an air spray system.
- Always have the tip guard and the trigger guard on the gun/valve when dispensing.
- Be sure the valve trigger safety operates before dispensing.
- Lock the valve trigger safety when you stop dispensing.
- Follow the **Pressure Relief Procedure** on page 7 if the nozzle clogs and before cleaning, checking or servicing the equipment.
- Tighten all fluid connections before operating the equipment.
- Check the hoses, tubes, and couplings daily. Replace worn, damaged, or loose parts immediately. Permanently coupled hoses cannot be repaired; replace the entire hose.



MOVING PARTS HAZARD

Moving parts can pinch or amputate your fingers.

- Keep clear of all moving parts when starting or operating the pump.
- Before checking or servicing the equipment, follow the **Pressure Relief Procedure** on page 7 to prevent the equipment from starting unexpectedly.

WARNING



FIRE AND EXPLOSION HAZARD

Improper grounding, poor ventilation, open flames or sparks can cause a hazardous condition and result in a fire or explosion and serious injury.

- Ground the equipment and the object being dispensed to. Refer to **Grounding** on page 7.
- If there is any static sparking or you feel an electric shock while using this equipment, **stop dispensing immediately**. Do not use the equipment until you identify and correct the problem.
- Provide fresh air ventilation to avoid the buildup of flammable fumes from solvents or the fluid being dispensed.
- Keep the dispense area free of debris, including solvent, rags, and gasoline.
- Do not smoke in the dispense area.
- Do not turn on or off any light switch in the dispense area while dispensing or while operating if fumes are present.



TOXIC FLUID HAZARD

Hazardous fluid or toxic fumes can cause serious injury or death if splashed in the eyes or on the skin, inhaled, or swallowed.

- Know the specific hazards of the fluid you are using.
- Store hazardous fluid in an approved container. Dispose of hazardous fluid according to all local, state and national guidelines.
- The air motor exhausts any fluids added to the input air, such as oil or antifreeze.
- Always wear protective eyewear, gloves, clothing and respirator as recommended by the fluid and solvent manufacturer.

United States Government safety standards have been adopted under the Occupational Safety and Health Act. You should consult these standards — particularly the General Standards, Part 1910, and the Construction Standards, Part 1926.

Operation/Service

Refer to your pump manual 309224 (supplied) for operating and service instructions.

Installation

Grounding

Static electricity is created by the flow of fluid through the pump and hose. If the pump is not properly grounded, sparking may occur, and the system may become hazardous. Sparking may also occur when plugging in or unplugging a power supply cord. Sparks can ignite fumes from solvents, dust particles and other flammable substances, whether you are operating indoors or outdoors, and can cause a fire or explosion and serious bodily injury and property damage.

If you experience any static sparking or even a slight shock while using this equipment, **stop dispensing immediately**. Check for proper grounding. Do not use the system again until the problem has been identified and corrected.

To reduce the risk of static sparking, ground the pump. Check your local electrical code for detailed grounding instructions for your area and type of equipment. Be sure to ground all of this dispensing equipment:

- *Pump:* Use a ground wire and clamp, as shown in Fig. 1.
- *Fluid hoses:* Use only grounded fluid hoses.
- *Air hoses:* Use only grounded air hoses.
- *Dispensing valve:* Obtain grounding through connection to a properly grounded fluid hose and pump.
- *Fluid supply container:* Follow the local code.
- *Air compressor:* Follow the local code.
- *To maintain grounding continuity when flushing or relieving pressure,* always hold a metal part of the dispense valve firmly to the side of a grounded metal pail, then trigger the valve.

To ground the pump, loosen the grounding lug locknut (W) and washer (X). Insert one end of a 12 ga (1.5 mm @) minimum ground wire (Y) into the slot in lug (Z) and tighten the locknut securely. Connect the other end of the ground wire to a true earth ground.

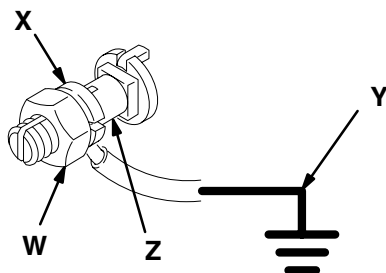


Fig. 1

0864

Air Line Accessories

Refer to your pump manual 308-262 (supplied) for a Typical Installation drawing and information on recommended air line accessories.

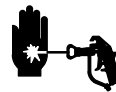
WARNING

A bleed-type master air valve is required in your system to help reduce the risk of serious bodily injury, including fluid injection, splashing in the eyes or on the skin, and injury from moving parts if you are adjusting or repairing the pump.

The bleed-type master air valve relieves air trapped between this valve and the pump after the air is shut off. Trapped air can cause the pump to cycle unexpectedly. Install the valve close to the pump.

Pressure Relief Procedure

WARNING



INJECTION HAZARD

Fluid under high pressure can be injected through the skin and cause serious injury. To reduce the risk of an injury from injection, splashing fluid, or moving parts, follow the **Pressure Relief Procedure** whenever you

- Are instructed to relieve the pressure
- Stop dispensing
- Check or service any of the system equipment
- Install or clean the spray tips/nozzles

1. Close the pump air regulator.
2. Close the bleed-type master air valve (required in your system).
3. Hold a metal part of the dispensing valve firmly to the side of a metal waste container, and trigger the valve to relieve fluid pressure.

If you suspect that the dispensing valve, extension, or grease fitting coupler is clogged, or that pressure has not been fully relieved after following the steps above, very slowly loosen the coupler or hose end coupling and relieve pressure gradually, then loosen it completely, then clear the clog.

Installation

Using a Follow Plate

If using a follow plate (5), remove the fluid container cover. To prevent air from being trapped under the follow plate, scoop grease from the center of the container to the sides, to make the surface concave. Place the follow plate on the grease, and push down on the plate until grease appears at the center opening (C). See Fig. 2.

Flushing

The pump is tested with lightweight oil, which is left in to protect the pump parts. If the fluid you are using may be contaminated by the oil, flush it out with a compatible solvent before using the pump.

1 Concave surface

2 Push down on plate

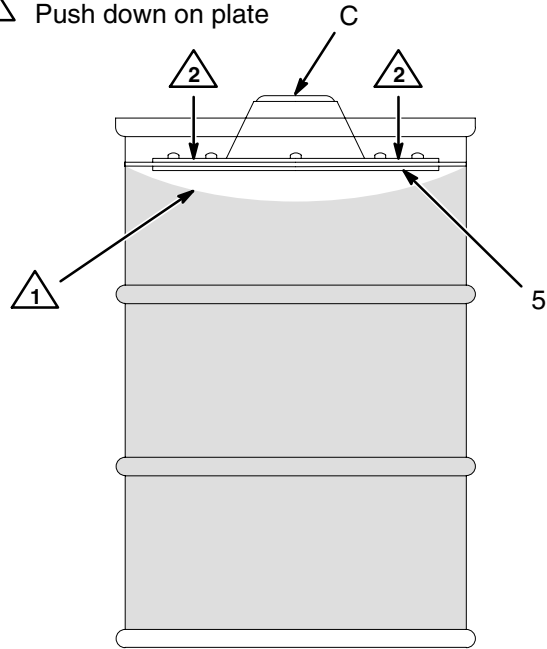


Fig. 2

02050

! WARNING



For your safety, read the warning section **FIRE AND EXPLOSION HAZARD** on page 6 before flushing, and follow all the recommendations given there.

Installation

Models 244082, 244084, 241030, and 241033

1. Remove the cover from the grease drum.
2. See Fig. 3 or 4. Place the follow plate (5) on the surface of the grease (See page 8).
3. Place the cover (4) on the drum. *On Model 236049 only*, secure the cover with the three thumbscrews (T).
4. Insert the pump (1) through the cover (4) and follow plate (5). Lower the pump until it rests on the cover, and secure with the screws (S), using the proper hole pattern in the pump mounting plate (M).

NOTE: The mounting plate has two different hole patterns. Use the one that fits your cover.

5. Screw the 1/4 npt(mbe) fluid hose (2a) into the pump fluid outlet.
6. Screw the 3/8 npt swivel adapter (2b) into the pump air inlet or air regulator (8b) inlet, whichever is applicable. Connect the 3/8 npt(mbe) air hose (2c).

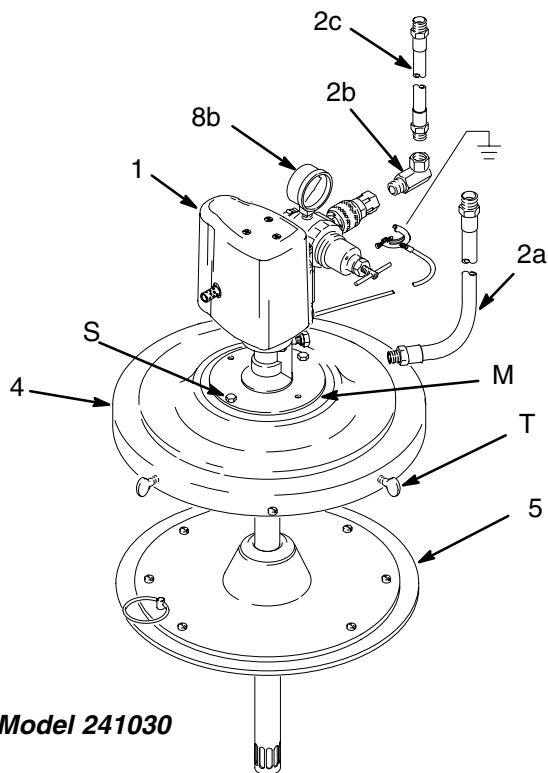


Fig. 3

01983B

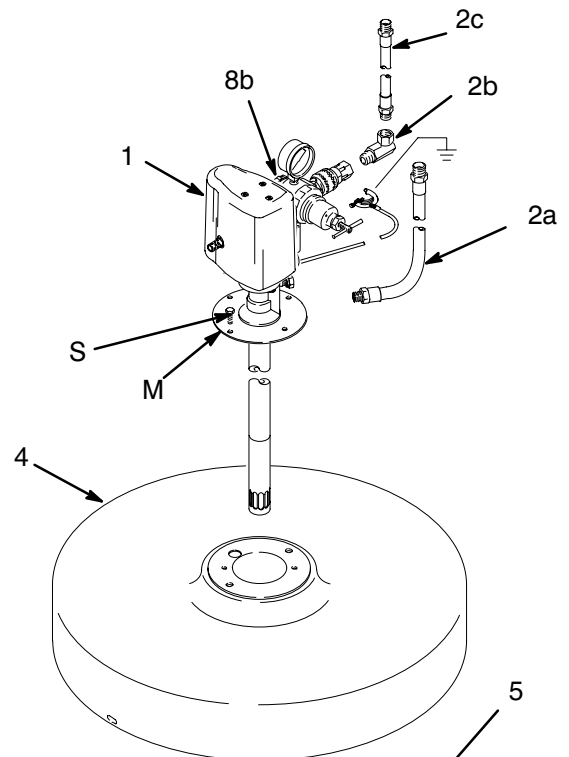


Fig. 4

01986B

Installation

Models 244097, 244098, 244099, 244103, and 241022 through 241025

1. *Models 244098 and 241023 only:* Assemble the truck (3) as shown on page 15. Secure the empty pail (6) to the truck base with the pointed clamps (3d) and thumbnuts (3c).

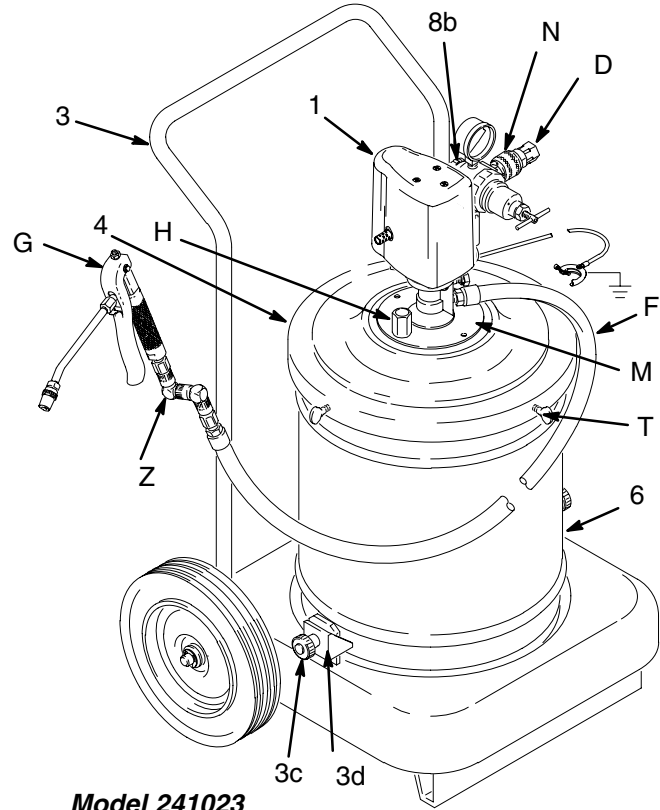
Models 244099, 244103, 241024, and 241025 only: Press the empty pail (6) into the dolly (3), making sure that it is flat against the bottom of the dolly. Tighten the nut on the dolly bolt to secure. See page 20.

All other models:

2. Remove the cover from a pail of grease. Place the pail of grease into the empty pail (6). Secure the cover (4) on the pail with the three thumbscrews (T). See Fig. 5.
3. Insert the pump through the cover (4). Lower the pump until it rests on the cover and secure with the two gun holders (H), using the proper hole pattern in the pump mounting plate (M).

NOTE: The mounting plate has two different hole patterns. Use the one that fits your cover.

4. Connect the hose (F) to the pump fluid outlet, and assemble the swivel (Z) and gun (G) to the hose.
5. Connect the nipple (N) to the pump air inlet or air regulator (8b) inlet, whichever is applicable. Connect the quick-disconnect coupler (D) to the air supply hose.



Model 241023

Fig. 5

01978B

Installation

Models 244100, 244101, 241027, and 241028

1. *Models 244101 and 241028:* Assemble the truck (3) as shown in the parts drawing on page 15.
Models 244100 and 241027: Assemble the base (3) as shown in the parts drawing on page 17.
2. Place an opened 120 lb (55 kg) drum of grease on the mounting base or truck, and secure it with the hold down clamps (3d). Position the clamps above the drum bead. Tighten the thumbscrews (3c) or bolts (3b).
3. See Fig. 6. Place the follow plate (5) on the surface of the grease.
4. Insert the pump through the cover (4) and slide the cover up far enough to let the pump pass easily through the follow plate grommet.
5. Fasten the cover (4) to the drum with the thumbscrews (T). Secure the pump to the cover with the two gun holders (H), using the proper hole pattern in the pump mounting plate (M).

NOTE: The mounting plate has two different hole patterns. Use the one that fits your cover.

6. Connect the hose (F) to the pump fluid outlet, and assemble the z-swivel (Z) and gun (G) to the hose.
7. Connect the nipple (N) to the pump air inlet or air regulator (8b) inlet, whichever is applicable. Connect the quick-disconnect coupler (D) to the air supply hose.

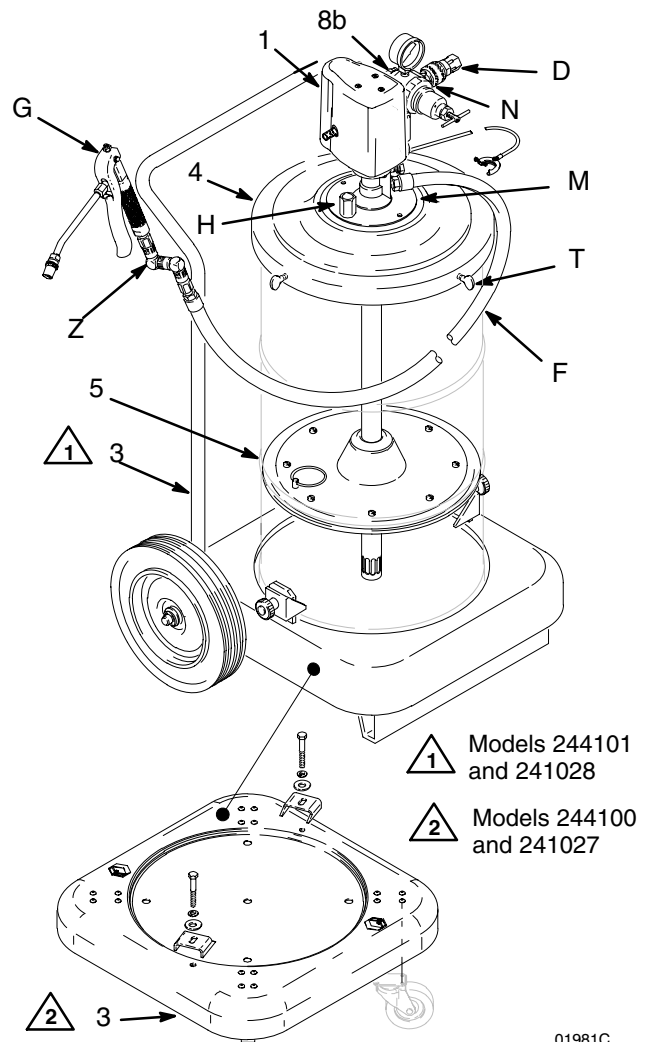


Fig. 6

Models 244095, 244104, 241020, and 241026

1. See Fig. 7. Place the follow plate (5) on the surface of the grease.
2. If desired, remove the mounting plate from the pump (see manual 309224). The plate is not needed on this assembly.
3. Insert the pump through the cover (4a) and slide the cover up far enough to let the pump pass easily through the follow plate grommet. The slip clutch (4b) will secure the pump in place.
4. Place the cover (4a) on the pail, and tighten the thumbscrews (4f). Install the handle (7) on the pump with three screws.
5. Connect the hose (F) to the pump fluid outlet. Assemble the swivel (Z) and gun (G) to the hose.
6. Connect the nipple (N) to the pump air inlet or air regulator (7b) inlet, whichever is applicable. Connect the quick-disconnect coupler (D) to the air supply hose.

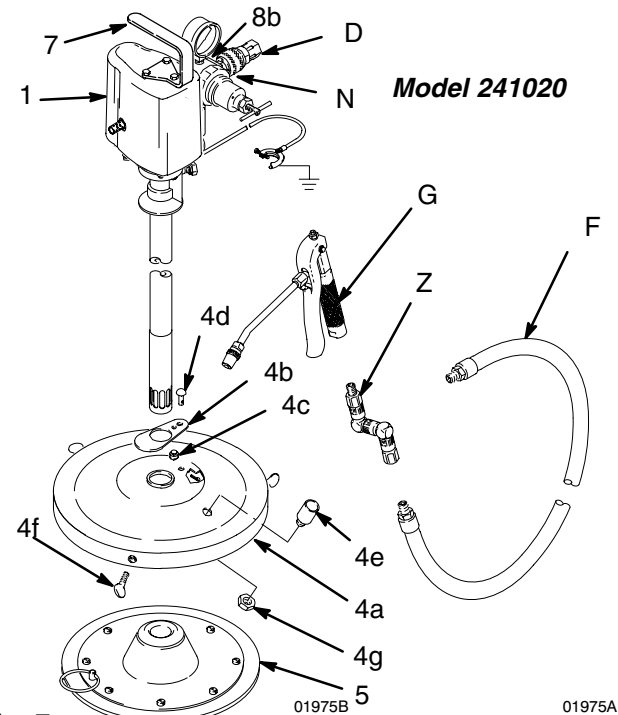


Fig. 7

Installation

Models 244102 and 241029

1. Assemble the cart (3) as shown in Fig. 8. Use only 2 of the 4 brackets (7d) supplied. Install in the rear positions, of the drum shelf (3b), as shown.
2. Place an opened 120 lb (55 kg) drum of grease on the drum shelf.
3. Place the follow plate (5) on the surface of the grease (See page 8).
4. Insert the pump (1) through the cover (4), and slide the cover up far enough to allow the pump to easily pass through the follow plate grommet and into the grease.
5. Using items 7a to 7d, secure the cover to the drum and the drum to the cart. Attach the pump mounting plate (M) to the cover using the screws (S) and washers supplied with the cover.
6. Connect the hose (F) to the pump fluid outlet, and assemble the z-swivel (Z) and gun (G) to the hose.
7. Connect the nipple (N) to the pump air inlet or air regulator (8b) inlet, whichever is applicable. Connect the quick-disconnect coupler (D) to the air supply hose.

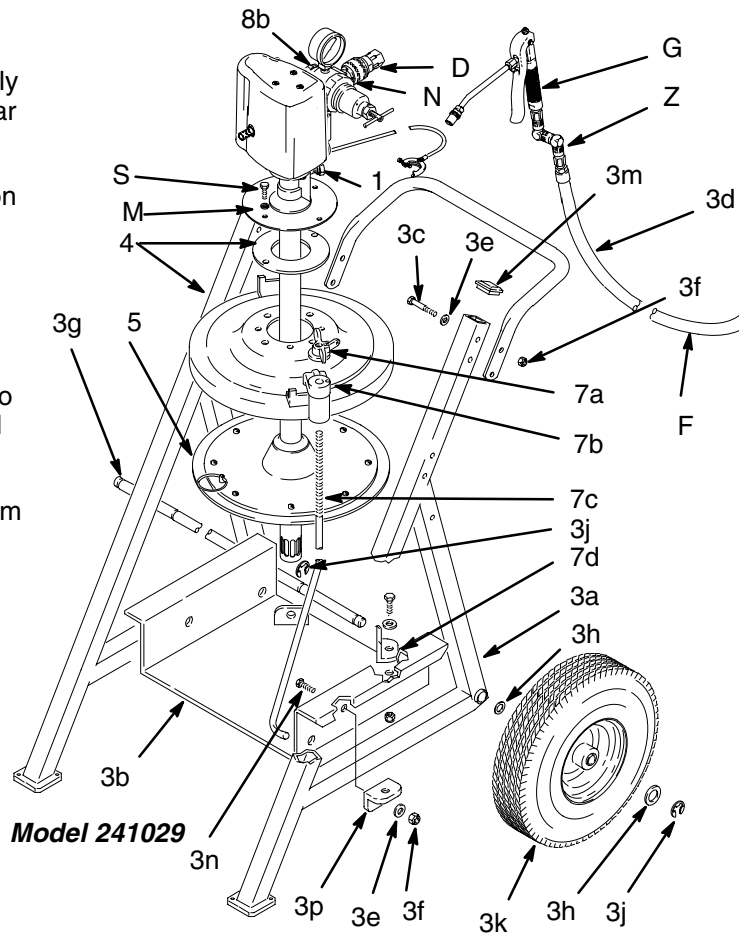


Fig. 8

01982B

Models 244096 and 241021

1. Assemble the truck (3), and install the pump support (4) on the truck handle. See Fig. 9 and the parts drawing on page 15.
2. Install the pump (1) on the pump support (4), and secure it with the two gun holders (H).
3. Install the inductor plate (5) on the pump intake, and secure it with the nut (L).
4. Place an open container of grease on the truck base, and prepare the surface of the grease (see page 8). Center the inductor plate (5) over the container, and lower it into the container. Open the vent handle (V), and leave it open until grease appears at the opening, then close it.
5. Connect the hose (F) to the pump fluid outlet, and assemble the z-swivel (Z) and gun (G) to the hose.
6. Connect the nipple (N) to the pump air inlet or air regulator (8b) inlet, whichever is applicable. Connect the quick-disconnect coupler (D) to the air supply hose.

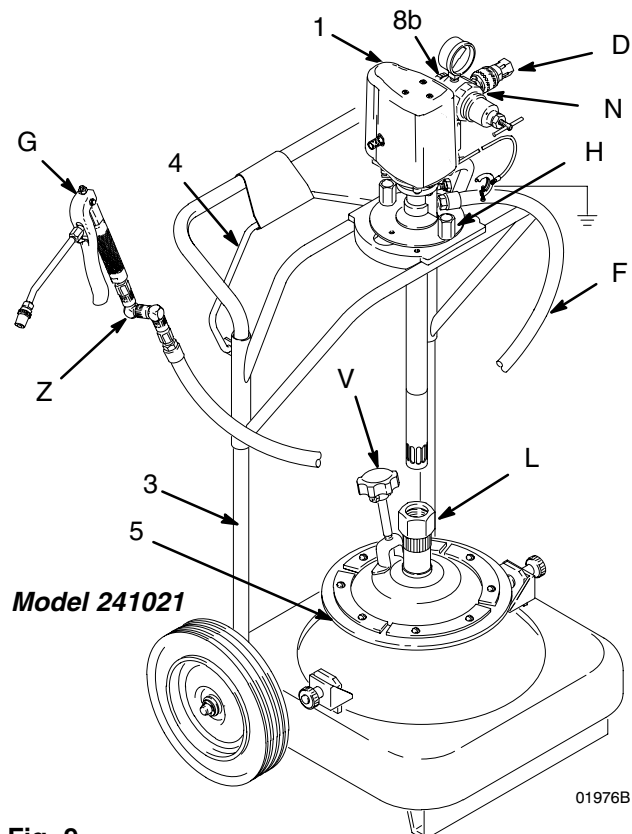


Fig. 9

01976B

Installation

Models 244083 and 241031

1. Assemble the elevator (3) and support (4) as explained in the separate manuals 306522 and 306523. See also Fig. 10 and the parts drawing on page 22.
2. Remove the pump mounting plate (M) with a snap-ring pliers (see manual 309224). Screw the fluid fitting (U) into the pump fluid outlet. Orient the fitting so it and the fluid hose will not interfere with the mounting plate (M), and reinstall the plate.
3. Insert the pump (1) through the support (4) and the cover (R). Attach the mounting plate (M) to the support, using the screws (S) and nuts supplied.
4. Install the inductor plate (P) on the pump intake and secure with the nut (L).
5. Connect the remaining air and fluid hoses and fittings (see manuals 306522 and 306523).
6. Raise the elevator to its maximum height.
7. Place an opened 120 lb (55 kg) drum of grease on the base and center it under the inductor plate (P). See page 8, and prepare the surface of the grease.
8. Lower the elevator until the inductor plate just begins to enter the drum. Check that it is centered; reposition the drum if necessary. Open the vent handle (V) and leave open until grease appears at the opening, then close it.
9. Refer to manuals 306522 and 306523 for elevator operation.

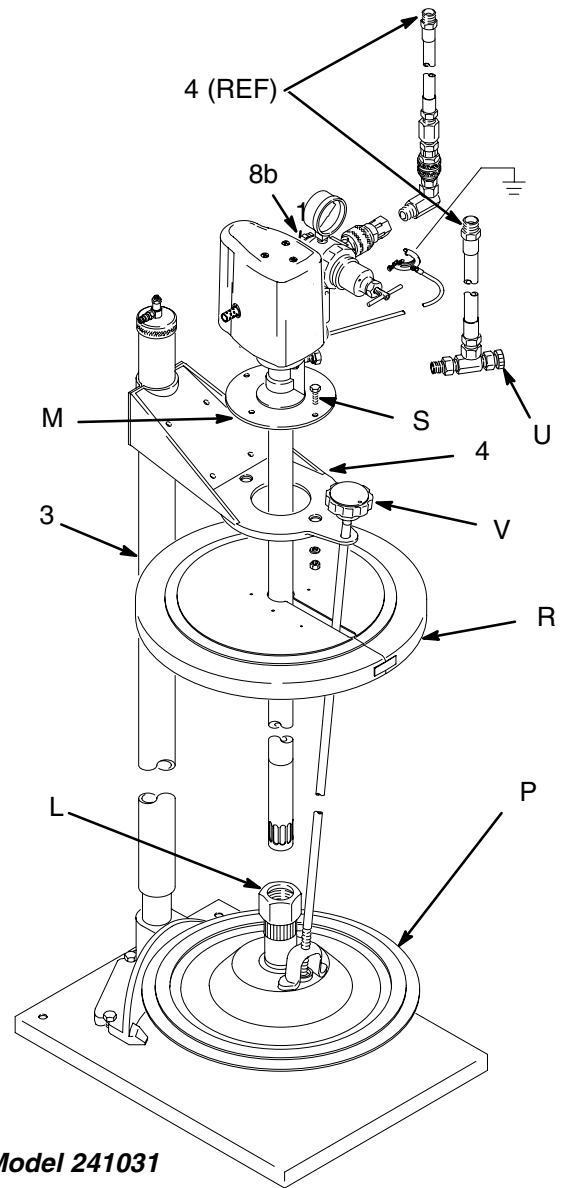


Fig. 10

Parts

Models 244095, 244104, 214020, and 241026

35 to 50 lb (16 to 23 kg) pail size

Model 244095 includes items 1, 2, and 4 to 7.

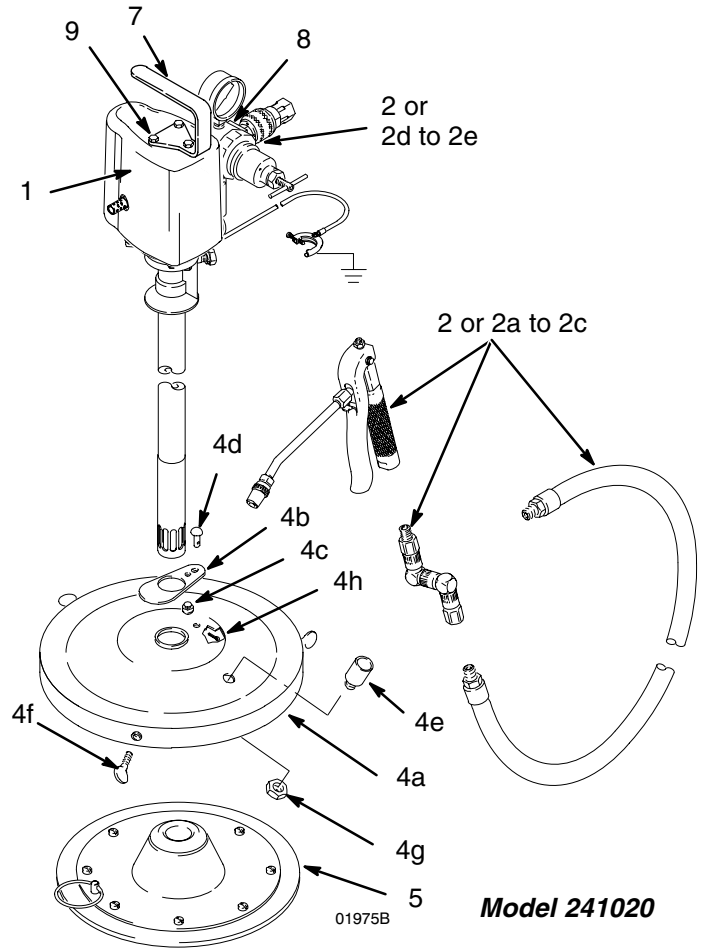
Model 244104 includes items 1, 2a to 2e, and 4 to 7.

Model 241020 includes items 1, 2, and 4 to 8.

Model 241026 includes items 1, 2, and 4 to 8.

| REF NO. | PART NO. | DESCRIPTION | QTY |
|---------|----------|---|-----|
| 1 | 244044 | PUMP, Falcon; 50:1 Ratio; See 309224 for parts. | 1 |
| 2 | 236058 | DISPENSE KIT; 12 ft (3.7 m) hose; Used on Model 244095 only. See parts list on page 18. | 1 |
| 2a | 242056 | DISPENSE VALVE; See 309032 for parts. | 1 |
| 2b | 204084 | SWIVEL, straight; 1/4 npt (m x f) | 1 |
| 2c | 109150 | HOSE; buna-N; 1/4 npt(mbe); 6 ft (1.8 m) | 1 |
| 2d | 208536 | COUPLER, quick-disconnect | 1 |
| 2e | 169971 | NIPPLE, quick-disconnect | 1 |
| 4 | 222059 | COVER; Includes items 4a to 4h | 1 |
| 4a | 207617 | • COVER, pail | 1 |
| 4b | 168102 | • PLATE, stop, pump | 1 |
| 4c | 158048 | • BUMPER, button, rubber | 1 |
| 4d | 159608 | • RIVET | 1 |
| 4e | 150868 | • HOLDER, gun | 1 |
| 4f | 100220 | • SCREW, thumb | 3 |
| 4g | 100025 | • NUT, 1/4 nps thd | 1 |
| 4h | 100579 | • PIN, cotter; 1/8" x 1" | 1 |
| 5 | 220653 | FOLLOW PLATE; See 306345 for parts. | 1 |
| 7 | 188832 | HANDLE, pump | 1 |
| 8 | 240979 | CE Installation Kit See Parts on page 23. | 1 |
| 9* | 114509 | BOLT | 3 |

* Remove 3 Phillips screws attaching pump cover and replace with item 9 to attach handle.



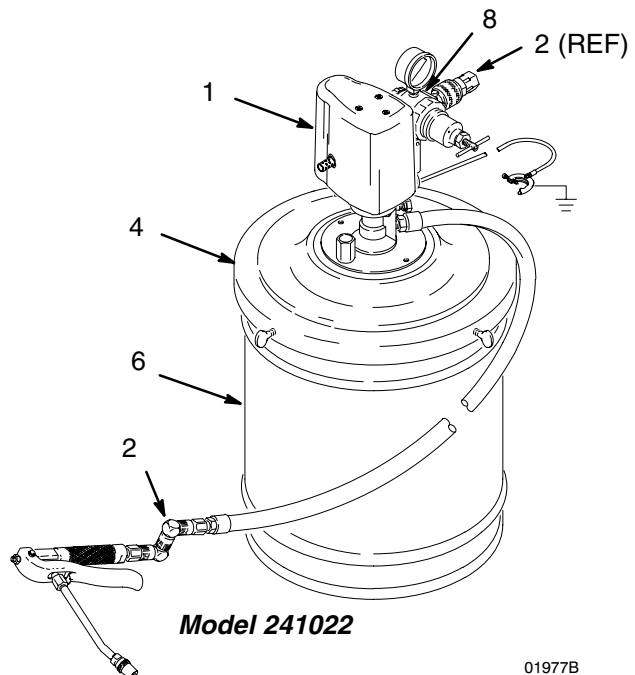
Models 244097 and 241022

35 to 50 lb (16 to 23 kg) pail size

Model 244097 includes items 1 to 6.

Model 241022 includes items 1 to 8.

| REF NO. | PART NO. | DESCRIPTION | QTY |
|---------|----------|---|-----|
| 1 | 244044 | PUMP, Falcon; 50:1 Ratio; See 309224 for parts. | 1 |
| 2 | 236058 | DISPENSE KIT; 12 ft (3.7 m) hose; See parts list on page 18. | 1 |
| 4 | 204574 | COVER See 306345 for parts. | 1 |
| 6 | 204134 | PAIL | 1 |
| 8 | 240979 | CE Installation Kit See Parts on page 23. | 1 |



Parts

Models 244096 and 241021

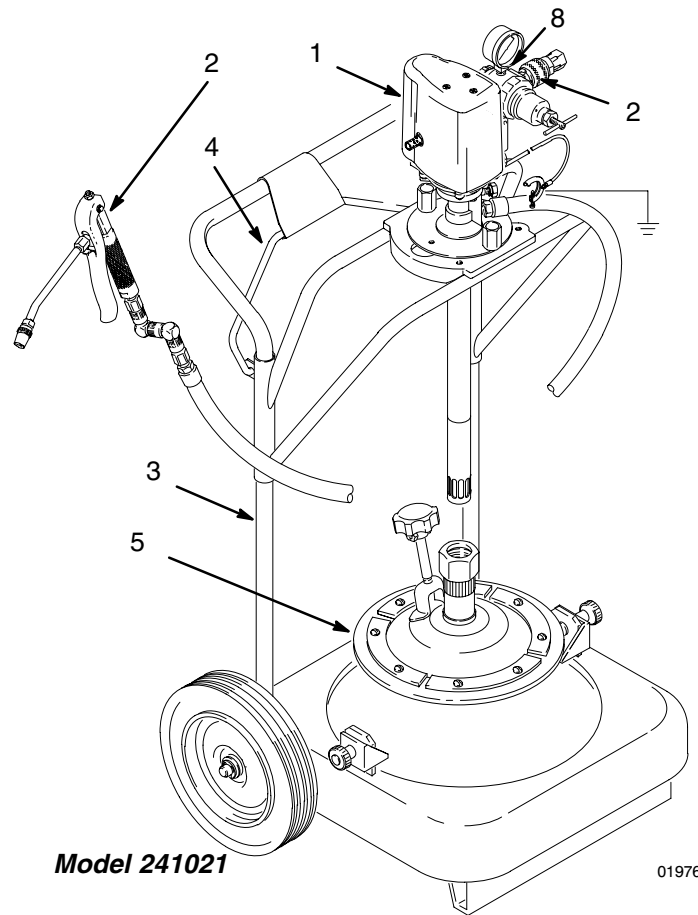
35 to 50 lb (16 to 23 kg) pail size

Model 244096 includes items 1 to 5.

Model 241021 includes items 1 to 8.

REF

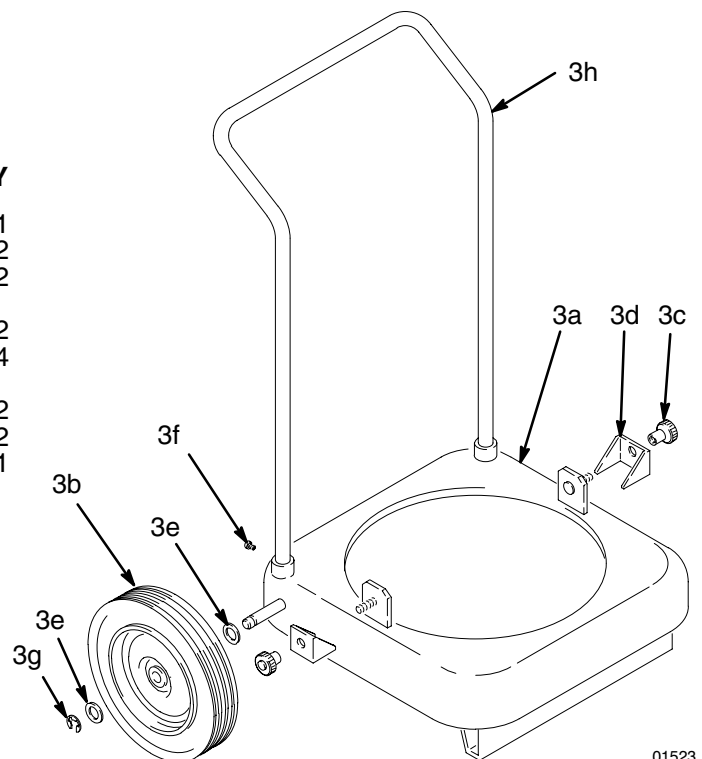
| NO. | PART NO. | DESCRIPTION | QTY |
|-----|----------|---|-----|
| 1 | 244044 | PUMP, Falcon; 50:1 Ratio; See 309224 for parts. | 1 |
| 2 | 236058 | DISPENSE KIT; 12 ft (3.7 m) hose; See parts list on page 18. | 1 |
| 3 | 203650 | TRUCK, 2 wheel See parts list below. | 1 |
| 4 | 203664 | SUPPORT | 1 |
| 5 | 204351 | INDUCTOR PLATE | 1 |
| 8 | 240979 | CE Installation Kit See Parts on page 23. | 1 |



Ref No. 3, Truck 203650

REF

| NO. | PART NO. | DESCRIPTION | QTY |
|-----|----------|---|-----|
| 3a | 203651 | • BASE, truck; bare | 1 |
| 3b | 101251 | • WHEEL | 2 |
| 3c | 159912 | • NUT, thumb, 5/16-18 | 2 |
| 3d | 159913 | • CLAMP, hold down; (steel drums only) | 2 |
| 3e | 154636 | • WASHER, 5/8", 16 GA | 4 |
| 3f | 100609 | • SCREW, rd nd mach; 1/4-20 x 0.375" | 2 |
| 3g | 101242 | • RING, retaining | 2 |
| 3h | 159924 | • HANDLE, truck | 1 |



Parts

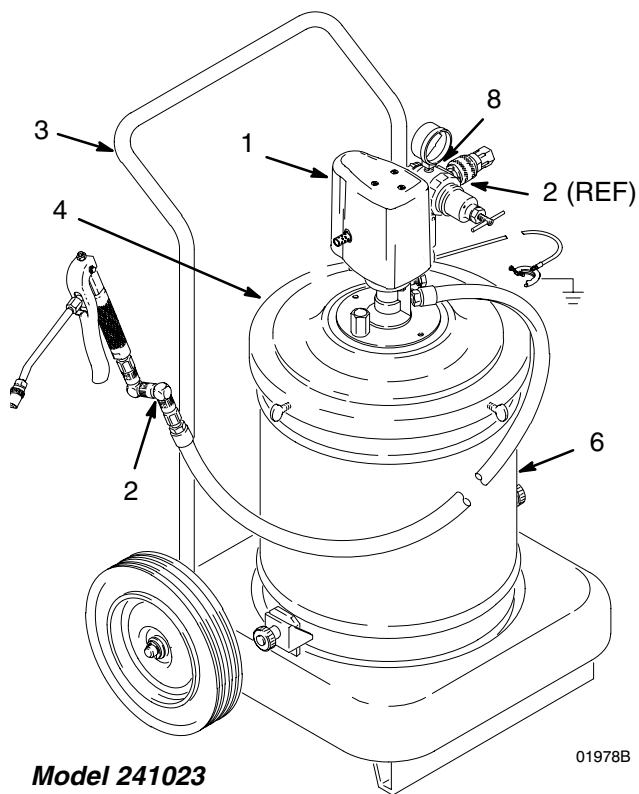
Models 244098 and 241023

35 to 50 lb (16 to 23 kg) pail size

Model 244098 includes items 1 to 6.

Model 241023 includes items 1 to 8.

| REF NO. | PART NO. | DESCRIPTION | QTY |
|------------|----------|--|-----|
| 1 | 244044 | PUMP, Falcon; 50:1 Ratio See 309224 for parts. | 1 |
| 2 | 236058 | DISPENSE KIT; 12 ft (3.7 m) hose See parts list on page 18. | 1 |
| 3 | 203650 | TRUCK, 2 wheel; See parts list on page 15. | 1 |
| 4 | 204574 | COVER See 306345 for parts. | 1 |
| 6 | 204134 | PAIL | 1 |
| 8 | 240979 | CE Installation Kit See Parts on page 23. | 1 |



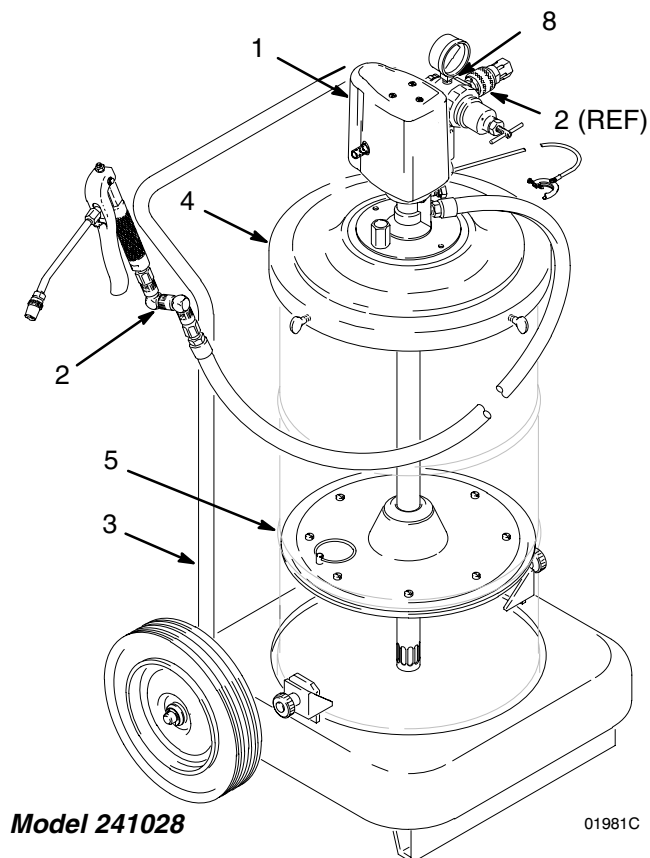
Models 244101 and 241028

120 lb (55 kg) drum size

Model 244101 includes items 1 to 5.

Model 241028 includes items 1 to 8.

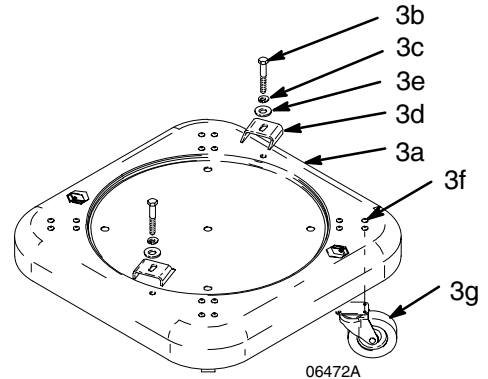
| REF NO. | PART NO. | DESCRIPTION | QTY |
|------------|----------|--|-----|
| 1 | 244045 | PUMP, Falcon; 50:1 Ratio See 309224 for parts. | 1 |
| 2 | 236058 | DISPENSE KIT; 12 ft (3.7 m) hose See parts list on page 18. | 1 |
| 3 | 203650 | TRUCK, 2 wheel See parts list on page 15. | 1 |
| 4 | 204574 | COVER See 306345 for parts. | 1 |
| 5 | 220654 | FOLLOW PLATE See 306345 for parts. | 1 |
| 8 | 240979 | CE Installation Kit See Parts on page 23. | 1 |



Parts

Ref No. 3, Portable Base 203622, Series B

| REF | | | |
|-----|----------|-------------------------------|-----|
| NO. | PART NO. | DESCRIPTION | QTY |
| 3a | 191750 | BASE, drum | 1 |
| 3b | 802275 | BOLT, hex hd; 5/16"–18 x 1.5" | 2 |
| 3c | 100214 | WASHER, lock | 2 |
| 3d | 191747 | BRACKET | 2 |
| 3e | 100132 | WASHER, flat | 2 |
| 3f | 113660 | RIVET | 16 |
| 3g | 113646 | CASTER; polyurethane | 4 |



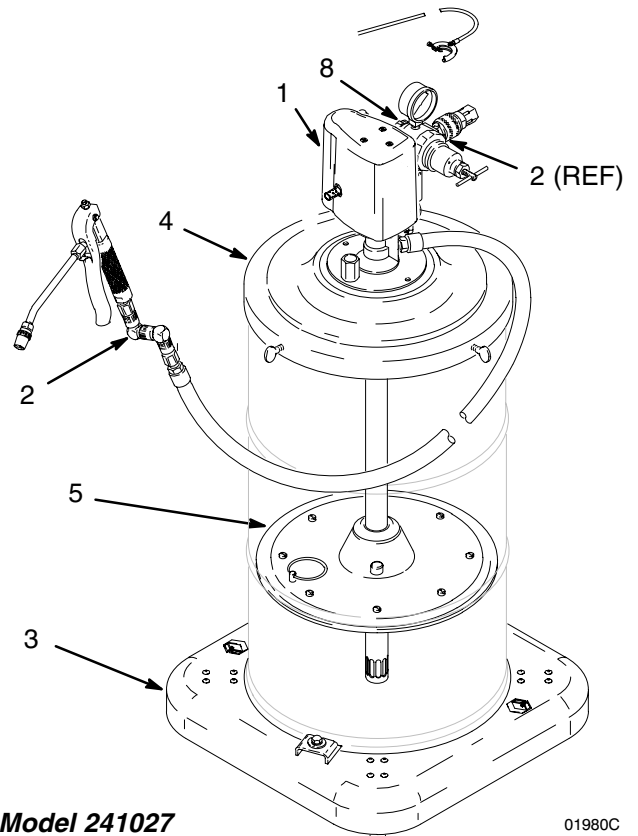
Model 244100 and 241027

120 lb (55 kg) drum size

Model 244100 includes items 1 to 5.

Model 241027 includes items 1 to 8.

| REF | | | |
|-----|----------|--|-----|
| NO. | PART NO. | DESCRIPTION | QTY |
| 1 | 244045 | PUMP, Falcon; 50:1 Ratio See 309224 for parts. | 1 |
| 2 | 236058 | DISPENSE KIT; 12 ft (3.7 m) hose See parts list on page 18. | 1 |
| 3 | 203622 | PORTABLE BASE See parts list above. | 1 |
| 4 | 204574 | COVER See 306345 for parts. | 1 |
| 5 | 220654 | FOLLOW PLATE See 306345 for parts. | 1 |
| 8 | 240979 | CE Installation Kit See Parts on page 23. | 1 |



Model 241027

01980C

Parts

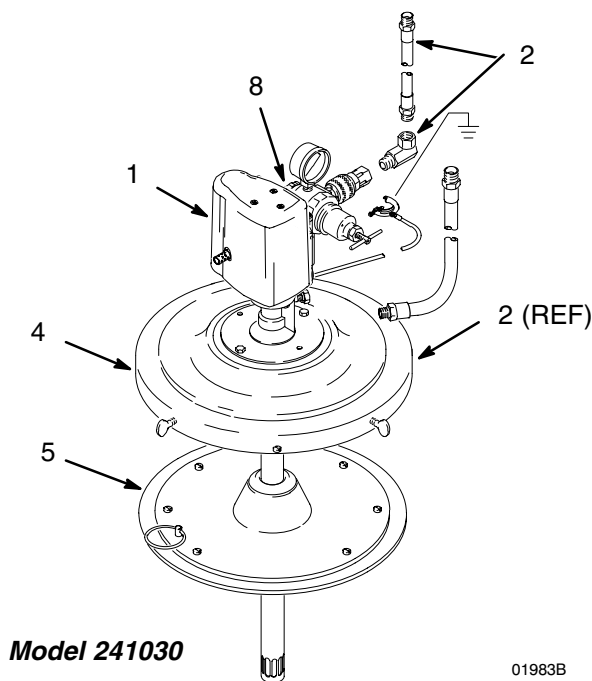
Model 244082 and 241030

120 lb (55 kg) drum size

Model 244082 includes items 1 to 5.

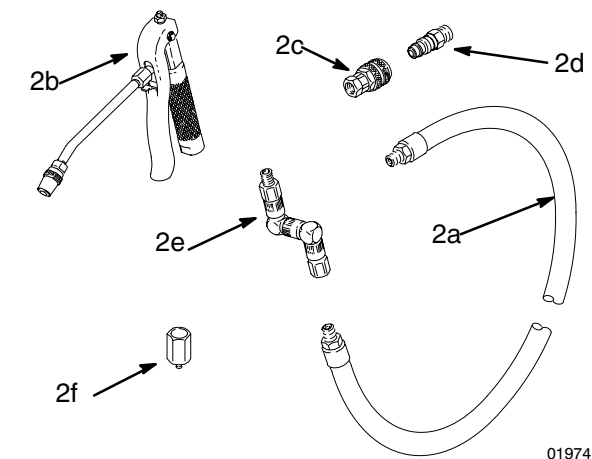
Model 241030 includes items 1 to 8.

| REF NO. | PART NO. | DESCRIPTION | QTY |
|---------|----------|---|-----|
| 1 | 244045 | PUMP, Falcon; 50:1 Ratio See 309224 for parts. | 1 |
| 2 | 222072 | INSTALLATION KIT; 6 ft (1.8 m) hose See parts list on page 19. | 1 |
| 4 | 204574 | COVER See 306345 for parts. | 1 |
| 5 | 220654 | FOLLOW PLATE See 306345 for parts. | 1 |
| 8 | 240979 | CE Installation Kit See Parts on page 23. | 1 |



Ref No. 2, Dispense Kit 236058

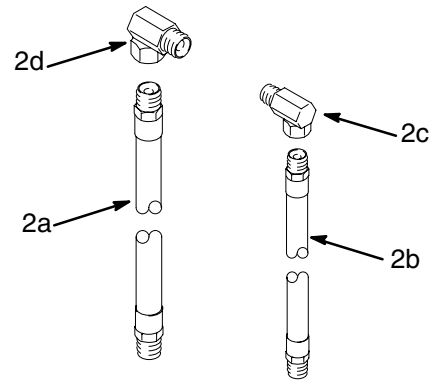
| REF NO. | PART NO. | DESCRIPTION | QTY |
|---------|----------|--|-----|
| 2a | 109151 | HOSE; 1/4 npt(mbe) x 12 ft (3.7 m) | 1 |
| 2b | 242056 | VALVE, grease dispense See manual 309032. | 1 |
| 2c | 208536 | COUPLER, quick-disconnect | 1 |
| 2d | 169971 | NIPPLE, quick-disconnect | 1 |
| 2e | 202577 | Z-SWIVEL | 1 |
| 2f | 188843 | HOLDER, gun | 1 |



Parts

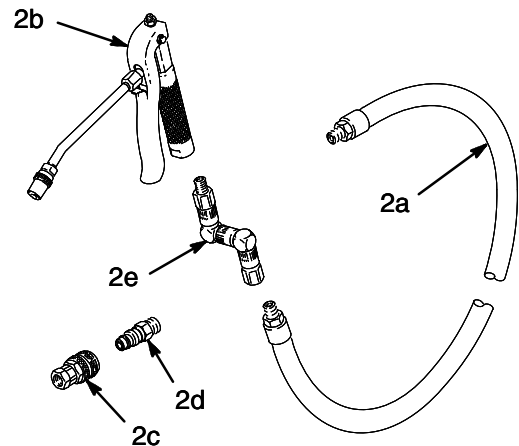
Ref No. 2, Installation Kit 222072

| REF NO. | PART NO. | DESCRIPTION | QTY |
|---------|----------|---|-----|
| 2a | 109150 | HOSE; buna-N; 1/4 npt(mbe) x 6 ft (1.8 m) | 1 |
| 2b | 203320 | HOSE; buna-N; 3/8 npt(mbe) x 6 ft (1.8 m) | 1 |
| 2c | 155541 | UNION, 90°; 1/4 npt(m) x 1/4 npsm(f) swivel | 1 |
| 2d | 155494 | UNION, 90°; 3/8 npt(m) x 3/8 npsm(f) swivel | 1 |



Ref No. 2, Dispense Kit 222383

| REF NO. | PART NO. | DESCRIPTION | QTY |
|---------|----------|--|-----|
| 2a | 109154 | HOSE; 1/4 npt(mbe) x 25 ft (7.6 m) | 1 |
| 2b | 242056 | VALVE, grease dispense See manual 309032. | 1 |
| 2c | 208536 | COUPLER, quick-disconnect | 1 |
| 2d | 169971 | NIPPLE, quick-disconnect | 1 |
| 2e | 202577 | Z-SWIVEL | 1 |



01520

Parts

Models 244099, 244103, 241024, and 241025

35 to 70 lb (16 to 32 kg) pail size

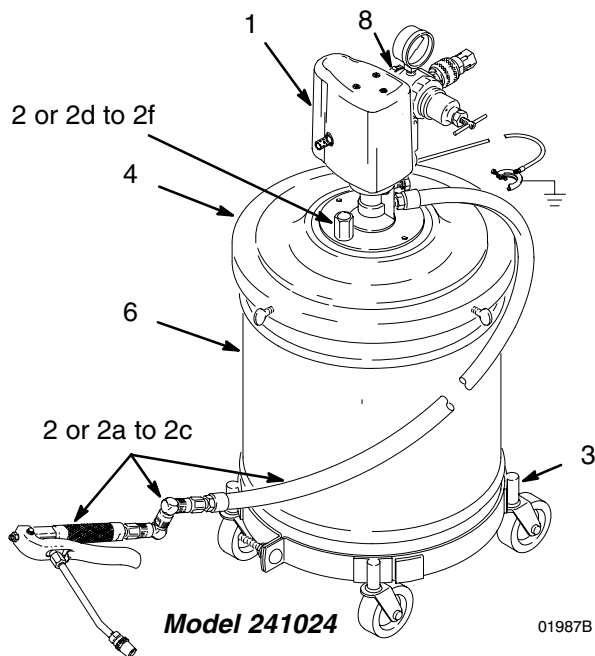
Model 244099 includes items 1 to 4 and 6.

Model 244103 includes items 1 to 6.

Model 241024 includes items 1 to 4, 6, and 8.

Model 241025 includes items 1 to 8.

| REF NO. | PART NO. | DESCRIPTION | QTY |
|---------|----------|---|-----|
| 1 | 244044 | PUMP, Falcon; 50:1 Ratio See 309224 for parts. | 1 |
| 2 | 236058 | DISPENSE KIT; 12 ft (3.7 m) hose; Used on Model 244099 only. See parts list on page 18. | 1 |
| 2a | 242056 | DISPENSE VALVE See 309032 for parts. | 1 |
| 2b | 204084 | SWIVEL, straight; 1/4 npt (m x f) | 1 |
| 2c | 109150 | HOSE; 6 ft (1.8 m) | 1 |
| 2d | 208536 | COUPLER, quick-disconnect | 1 |
| 2e | 169971 | NIPPLE, quick-disconnect | 1 |
| 2f | 188843 | HOLDER, dispense valve | 1 |
| 3 | 204144 | DOLLY, pail | 1 |
| 4 | 204574 | COVER See 306345 for parts. | 1 |
| 5 | 220653 | FOLLOW PLATE (not shown) See 306345 for parts. | 1 |
| 6 | 204134 | PAIL | 1 |
| 8 | 240979 | CE Installation Kit See Parts on page 23. | 1 |



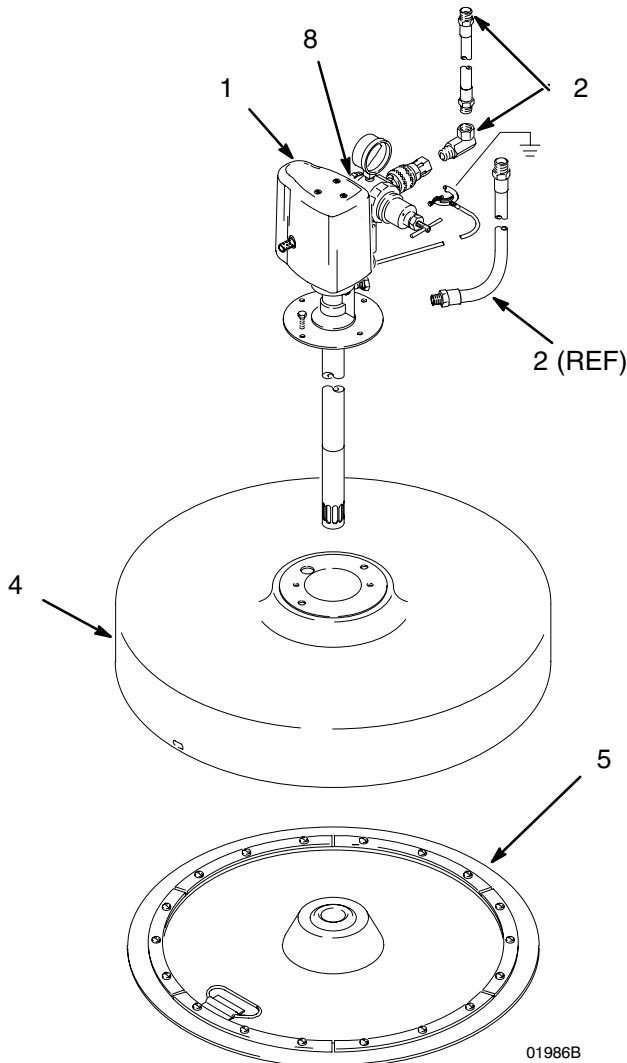
Model 244084 and 241033

400 lb (180 kg) drum size

Model 244084 includes items 1 to 5.

Model 241033 includes items 1 to 8.

| REF NO. | PART NO. | DESCRIPTION | QTY |
|---------|----------|---|-----|
| 1 | 244046 | PUMP, Falcon; 50:1 Ratio See 309224 for parts. | 1 |
| 2 | 222072 | INSTALLATION KIT; 6 ft (1.8 m) hose See parts list on page 19. | 1 |
| 4 | 200326 | COVER See 306345 for parts. | 1 |
| 5 | 223845 | FOLLOW PLATE See 306345 for parts. | 1 |
| 8 | 240979 | CE Installation Kit See Parts on page 23. | 1 |



Parts

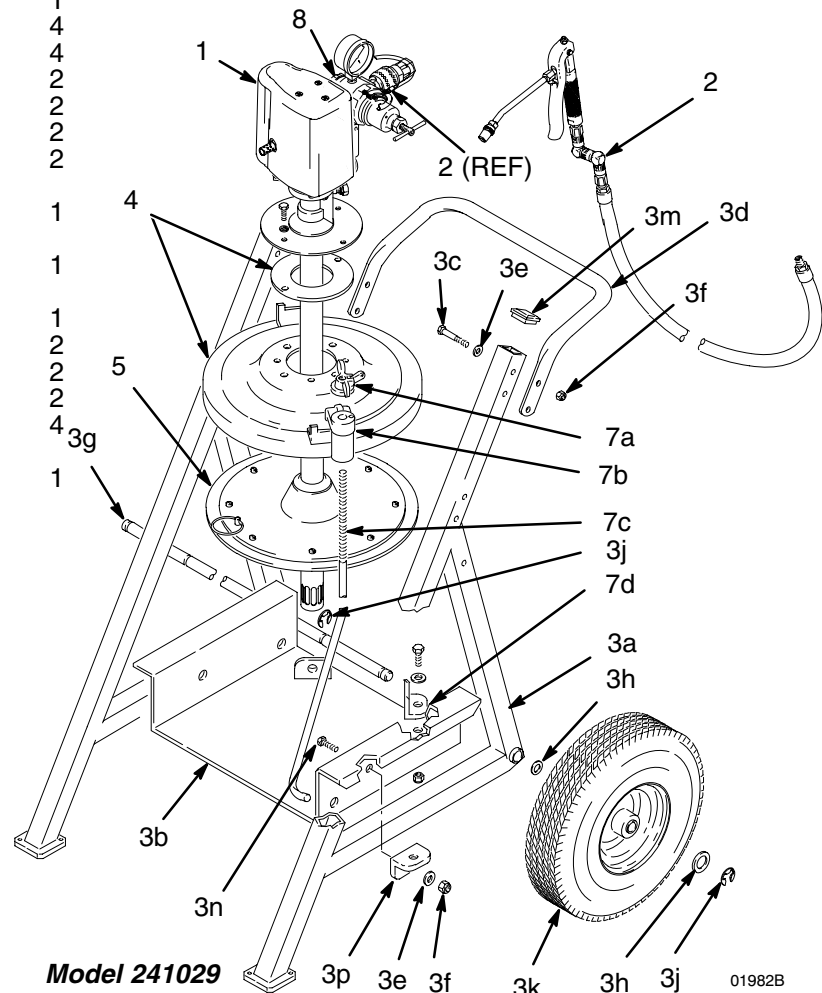
Model 244102 and 241029

120 lb (55 kg) drum size

Model 244102 includes items 1 to 7.

Model 241029 includes items 1 to 8.

| REF NO. | PART NO. | DESCRIPTION | QTY |
|---------|----------|---|-----|
| 1 | 244045 | PUMP, Falcon; 50:1 Ratio See 309224 for parts. | 1 |
| 2 | 222383 | DISPENSE KIT See parts list on page 19. | 1 |
| 3 | 222243 | CART KIT Includes items 3a to 3p | 1 |
| 3a | 218027 | • FRAME, cart | 2 |
| 3b | 183987 | • SHELF, drum | 1 |
| 3c | 107144 | • SCREW, cap; 3/8-16 x 2-1/4 | 4 |
| 3d | 179766 | • HANDLE, cart | 1 |
| 3e | 100731 | • WASHER, flat; 3/8 | 6 |
| 3f | 101566 | • LOCKNUT, hex; 3/8-16 | 6 |
| 3g | 179770 | • AXLE | 1 |
| 3h | 154628 | • WASHER, flat; 3/4 | 4 |
| 3j | 107146 | • RING, retaining, ext; 3/4 | 4 |
| 3k | 106039 | • WHEEL, tire, pneumatic | 2 |
| 3m | 107145 | • CAP, tube | 2 |
| 3n | 100680 | • CAPSCREW; 3/8-16 x 7/8 | 2 |
| 3p | 159016 | • BRACKET, retaining | 2 |
| 4 | 222060 | COVER See 306345 for parts. | 1 |
| 5 | 220654 | FOLLOW PLATE See 306345 for parts. | 1 |
| 7 | 222061 | HOLD DOWN KIT Includes items 7a to 7d | 1 |
| 7a | 200889 | • NUT, wing | 2 |
| 7b | 153166 | • HOOK, drum mounting | 2 |
| 7c | 153102 | • ROD, drum | 2 |
| 7d | 159016 | • BRACKET, retaining (2 used) | 4 |
| 8 | 240979 | CE Installation Kit See Parts on page 23. | 1 |



Parts

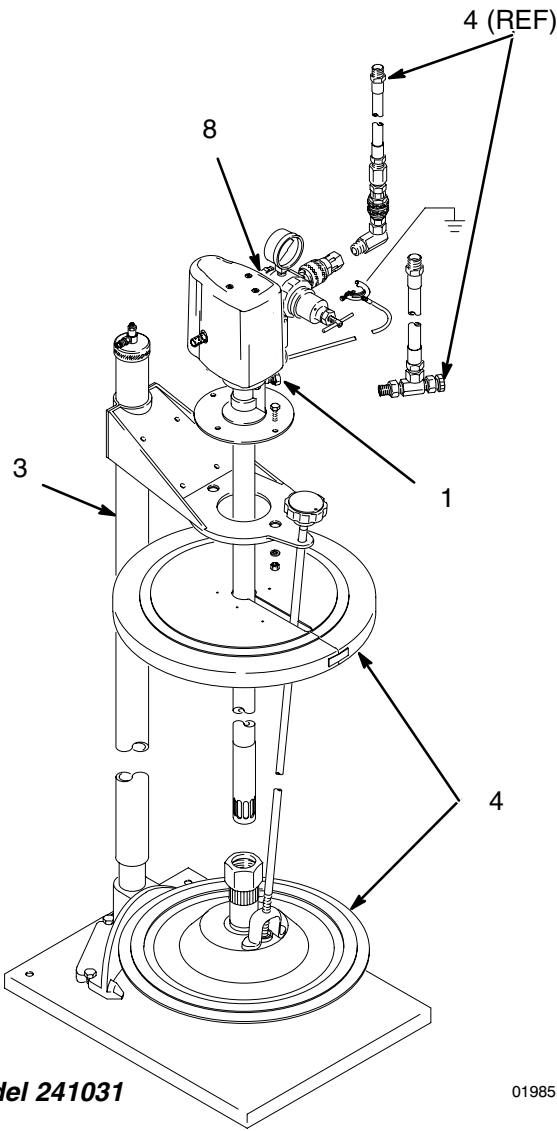
Model 244083 and 241031

120 lb (55 kg) drum size

Model 244083 includes items 1 to 4.

Model 241031 includes items 1 to 8.

| REF | | | |
|-----|----------|---|-----|
| NO. | PART NO. | DESCRIPTION | QTY |
| 1 | 244045 | PUMP, Falcon; 50:1 Ratio See 309224 for parts. | 1 |
| 3 | 204121 | ELEVATOR See 306522 for parts. | 1 |
| 4 | 222074 | SUPPORT See 306523 for parts. | 1 |
| 8 | 240979 | CE Installation Kit See Parts on page 23. | 1 |

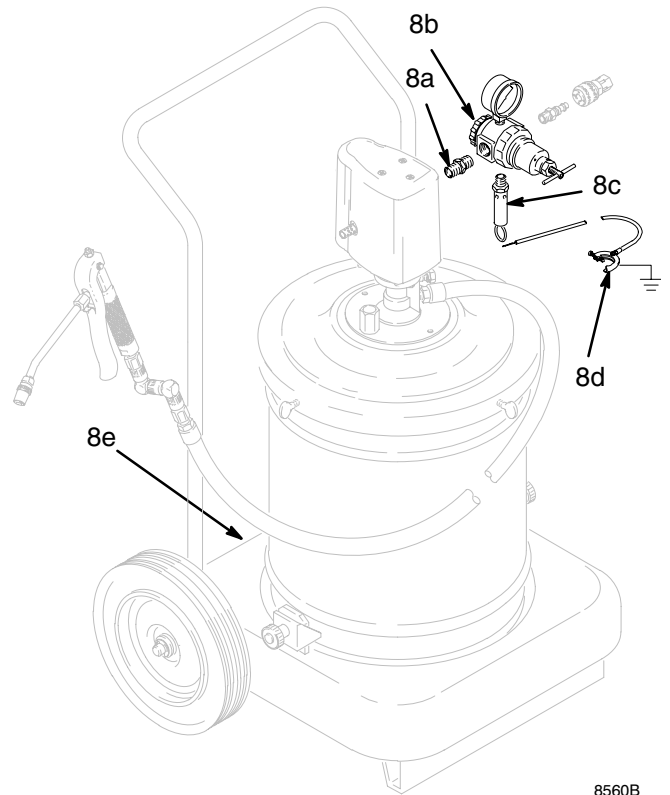


CE Installation Kit 240979

Ref. No. 8, CE Installation Kit 240979

| Ref No. | Part No. | Description | Qty. |
|---------|----------|----------------------------|------|
| 8a | 156849 | NIPPLE | 1 |
| 8b | 109075 | REGULATOR, air, with gauge | 1 |
| 8c | 103347 | VALVE, safety | 1 |
| 8d | 222011 | CLAMP, grounding | 1 |
| 8e | † | CE Label | 1 |

† **Attention:** To comply with CE directives, the CE identification label must be affixed to the back of the cart or to the top of the drum cover. Permanently mark the date of assembly on the label.



8560B

Accessories

USE GENUINE GRACO PARTS AND ACCESSORIES

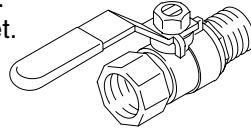
Must be purchased separately.

BLEED-TYPE MASTER AIR VALVE 107-142

300 psi (21 bar) Maximum Working Pressure

Relieves air trapped in the air line between the pump air inlet and this valve when closed.

1/2 npt(m) inlet x 1/2 npt(f) outlet.



FLEXIBLE EXTENSIONS

5000 psi (350 bar) Maximum Fluid Working Pressure

Use as an alternative to rigid nozzles.

Part No. 236-170 12 in. (0.305 m) long

Part No. 236-182 18 in. (0.457 m) long

Part No. 236-183 30 in. (0.762 m) long

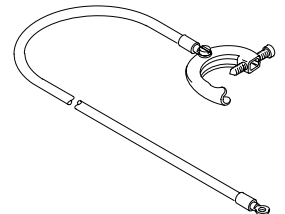
BOOSTER GUN 202-600

5000 psi (350 bar) Maximum Fluid Inlet Pressure

Boosts pressure of incoming grease to 18,000 psi (1260 bar).

GROUNDING WIRE AND CLAMP 222-011

25 ft (7.6 m) long, 12 gauge (1.5 mm²)



ROLL-AROUND DOLLY

Model 205-054 For 35 lb (16 kg) pail.

Model 204-144 For 70 lb (32 kg) pail.

Technical Data

| | |
|--|---|
| Maximum fluid working pressure | 7500 psi (52 MPa, 517 bar) |
| Maximum air inlet pressure | 150 psi (1.0 MPa, 10 bar) |
| Ratio | 50:1 |
| Pump cycles per lb (0.45 kg) | 52 |
| Maximum recommended pump speed | 115 cycles per minute |
| Recommended pump speed for continuous operation | 95 cycles per minute |
| Maximum delivery | 2.2 lb/min (1.0 kg/min) at 115 cycles/minute |
| Stroke length | 3.25 in. (82.5 mm) |
| Maximum pump operating temperature | 130°F (54°C) |
| Air inlet size | 3/8 npt(f) |
| Fluid outlet size | 1/4 npt(f) |
| Wetted parts | carbon steel; zinc plating; ductile iron; polyurethane; ultra-high molecular weight polyethylene; Buna-N |
| Sound pressure level at 70 psi air and 30 cpm | 72.99 dB(A) |
| * Sound power level at 70 psi air and 30 cpm | 85.88 dB(A) |
| Sound pressure level at 150 psi air and maximum cycle rate | 79.36 dB(A) |
| * Sound power level at 70 psi air and maximum cycle rate | 92.25 dB(A) |

* Sound power levels measured per ISO Standard 9614-2.

Graco Standard Warranty

Graco warrants all equipment manufactured by Graco and bearing its name to be free from defects in material and workmanship on the date of sale by an authorized Graco distributor to the original purchaser for use. With the exception of any special, extended, or limited warranty published by Graco, Graco will, for a period of twelve months from the date of sale, repair or replace any part of the equipment determined by Graco to be defective. This warranty applies only when the equipment is installed, operated and maintained in accordance with Graco's written recommendations.

This warranty does not cover, and Graco shall not be liable for general wear and tear, or any malfunction, damage or wear caused by faulty installation, misapplication, abrasion, corrosion, inadequate or improper maintenance, negligence, accident, tampering, or substitution of non-Graco component parts. Nor shall Graco be liable for malfunction, damage or wear caused by the incompatibility of Graco equipment with structures, accessories, equipment or materials not supplied by Graco, or the improper design, manufacture, installation, operation or maintenance of structures, accessories, equipment or materials not supplied by Graco.

This warranty is conditioned upon the prepaid return of the equipment claimed to be defective to an authorized Graco distributor for verification of the claimed defect. If the claimed defect is verified, Graco will repair or replace free of charge any defective parts. The equipment will be returned to the original purchaser transportation prepaid. If inspection of the equipment does not disclose any defect in material or workmanship, repairs will be made at a reasonable charge, which charges may include the costs of parts, labor, and transportation.

THIS WARRANTY IS EXCLUSIVE, AND IS IN LIEU OF ANY OTHER WARRANTIES, EXPRESS OR IMPLIED, INCLUDING BUT NOT LIMITED TO WARRANTY OF MERCHANTABILITY OR WARRANTY OF FITNESS FOR A PARTICULAR PURPOSE.

Graco's sole obligation and buyer's sole remedy for any breach of warranty shall be as set forth above. The buyer agrees that no other remedy (including, but not limited to, incidental or consequential damages for lost profits, lost sales, injury to person or property, or any other incidental or consequential loss) shall be available. Any action for breach of warranty must be brought within two (2) years of the date of sale.

Graco makes no warranty, and disclaims all implied warranties of merchantability and fitness for a particular purpose in connection with accessories, equipment, materials or components sold but not manufactured by Graco. These items sold, but not manufactured by Graco (such as electric motors, switches, hose, etc.), are subject to the warranty, if any, of their manufacturer. Graco will provide purchaser with reasonable assistance in making any claim for breach of these warranties.

In no event will Graco be liable for indirect, incidental, special or consequential damages resulting from Graco supplying equipment hereunder, or the furnishing, performance, or use of any products or other goods sold hereto, whether due to a breach of contract, breach of warranty, the negligence of Graco, or otherwise.

FOR GRACO CANADA CUSTOMERS

The parties acknowledge that they have required that the present document, as well as all documents, notices and legal proceedings entered into, given or instituted pursuant hereto or relating directly or indirectly hereto, be drawn up in English. Les parties reconnaissent avoir convenu que la rédaction du présente document sera en Anglais, ainsi que tous documents, avis et procédures judiciaires exécutés, donnés ou intentés à la suite de ou en rapport, directement ou indirectement, avec les procédures concernées.

Graco Phone Number

TO PLACE AN ORDER, contact your Graco distributor, or call this number to identify the distributor closest to you:

1-800-533-9655 Toll Free

1-612-623-6928 Local

1-612-378-3590 Fax

*All written and visual data contained in this document reflects the latest product information available at the time of publication.
Graco reserves the right to make changes at any time without notice.*

Sales Offices: Minneapolis, Detroit
International Offices: Belgium, Korea, Hong Kong, Japan

GRACO INC. P.O. BOX 1441 MINNEAPOLIS, MN 55440-1441

www.graco.com

PRINTED IN USA 308300 May 1993, Revised February 2001