

# INSTRUCTIONS—PARTS LIST



# 308272

Rev. B



## INSTRUCTIONS

This manual contains important warnings and information.  
**READ AND KEEP FOR REFERENCE.**

First choice when  
quality counts.™

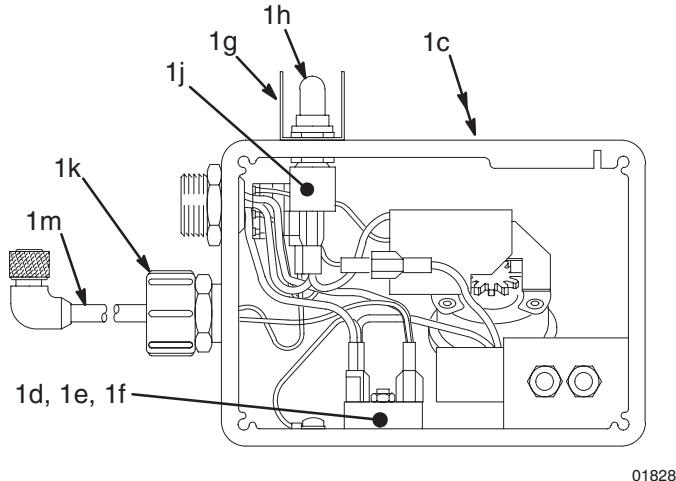
## GM1030™ PRESSURE CONTROL

Patents Pending

### Part No. 235720

For use with the GM1030 TexSpray™ Sprayer

Ref No.	Part No.	Description	Qty
1	235740	PRESSURE CONTROL <i>Includes replaceable items 1a to 1m</i>	1
1a	235728	. SWIVEL UNION, 3/8 npt(m) x 3/8 npsm(f) swivel ( <i>not shown</i> )	1
1b	188577	. NIPPLE, 1/2 to 3/8 npt ( <i>not shown</i> )	1
1c	188633	. LABEL, switch	1
1d	111936	. BRIDGE	1
1e	109557	. SCREW, 10–24 x 7/8"	1
1f	100179	. NUT	1
1g	109565	. GUARD	1
1h	109566	. BOOT	1
1j	109571	. ON/OFF SWITCH	1
1k	109550	. STRAIN RELIEF BUSHING	1
1m	111942	. POWER CORD	1



01828

## ⚠ WARNING

To reduce the risk of serious bodily injury, always turn the Easy Spray Control and the Engine Stop Lever to OFF before you perform any checks or services.

1. Disconnect the compressor hose from the regulator fitting (D). See Fig. 1.
2. Unscrew the collar (B), and disconnect the power supply cord from the control (1). See Fig. 2.
3. Disconnect the cables (F). See Fig. 1.
4. Remove the screws (E), and pull the pressure control away from the cart. Remove the regulator assembly. See Fig. 1.
5. Reinstall in the reverse order of disassembly.
6. Plug in the power cord so the notch (A) in the collar (B) and the tab (C) in the socket align. Screw on the collar. See Fig. 2.

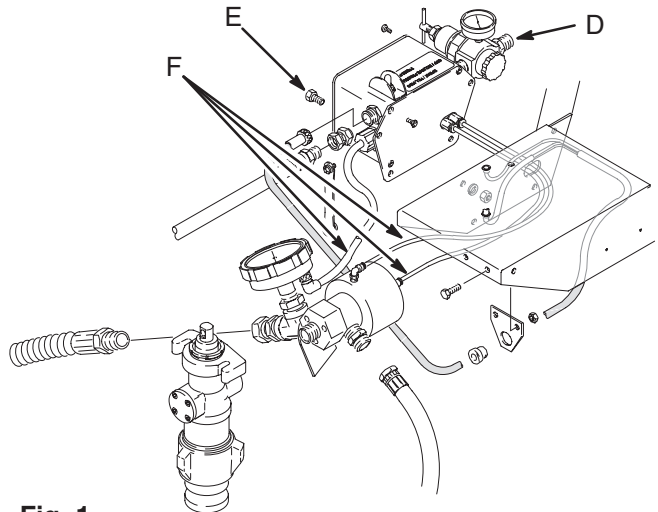


Fig. 1

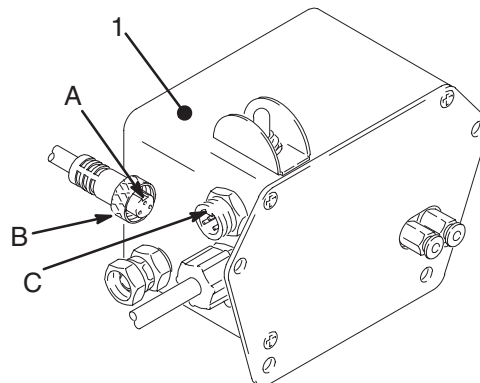


Fig. 2

01782

All written and visual data contained in this document reflect the latest product information available at the time of publication.  
Graco reserves the right to make changes at any time without notice.

**GRACO INC. P.O. BOX 1441 MINNEAPOLIS, MN 55440-1441**

**Sales Offices:** Minneapolis, Detroit **Foreign Offices:** Belgium, Korea, Hong Kong, Japan

**<http://www.graco.com>**

Graco Inc. is registered to I.S. EN ISO 9001

PRINTED IN USA ©COPYRIGHT 1993, GRACO INC. 308272 02/1993, Revised 02/2000