

Four-Finger Trigger Conversion Kit

Part Number 224—884

For use on the PRO4500™ Electrostatic Air Spray Gun, part no. 224—200, to change from a two-finger trigger to a four-finger trigger. See the other side of this form for the parts included with this kit.

Installation

Installing the Conversion Kit

WARNING

Before beginning to install the conversion kit, turn off the electrostatics to the gun and relieve all pressure in the system. This helps reduce the risk of fire, explosion, or electric shock, which could cause serious injury and property damage, and reduces the risk of splashing fluid in the eyes or on the skin if the gun is accidentally triggered.

Pressure Relief Procedure

1. Turn the ES Valve (electrostatics) OFF.
2. Turn off the air and fluid supply to the gun.
3. Trigger the gun into a grounded metal waste container to relieve fluid pressure.

1. Loosen the screws (A) and remove the two-finger trigger (B) from the gun. See Fig. 1.
 2. Loosen the nut (C) and fluid inlet fitting (H) and remove the fluid tube (D) from the gun.
 3. Remove the ferrules (E) from the old tube.
- NOTE:** The ferrules can be reused with the new tube or replaced with the ferrules supplied with the kit.
4. Remove the fluid inlet fitting (H) and o-ring (J).
 5. Loosen the air adapter (K), then remove the fluid adapter and bracket assembly (G), barb fitting (L) and o-ring (M).

6. Cut or grind off the finger tab (F) from the gun handle to allow room for the four-finger trigger. DO NOT cut into the handle.
7. Apply low-strength (purple) Loctite® to the screw (13) threads, then secure the finger tab (12) to the trigger (1) with the screw.

PRO4500 Spray Gun with Two-Finger Trigger

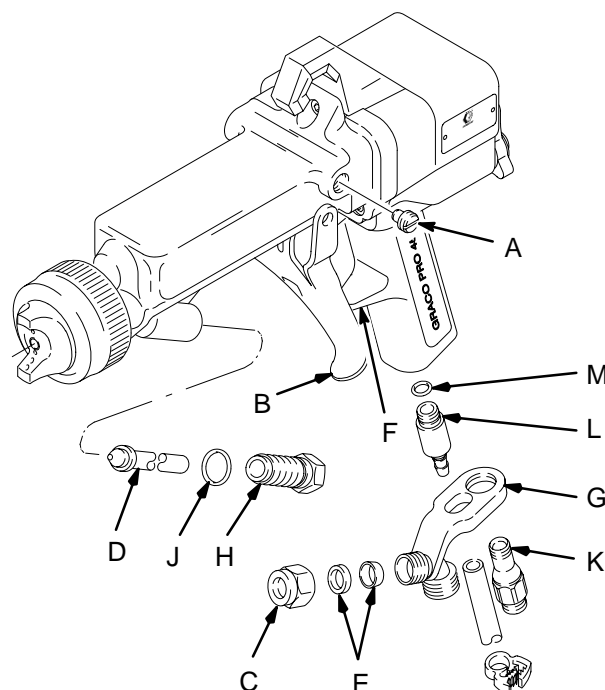


Fig. 1

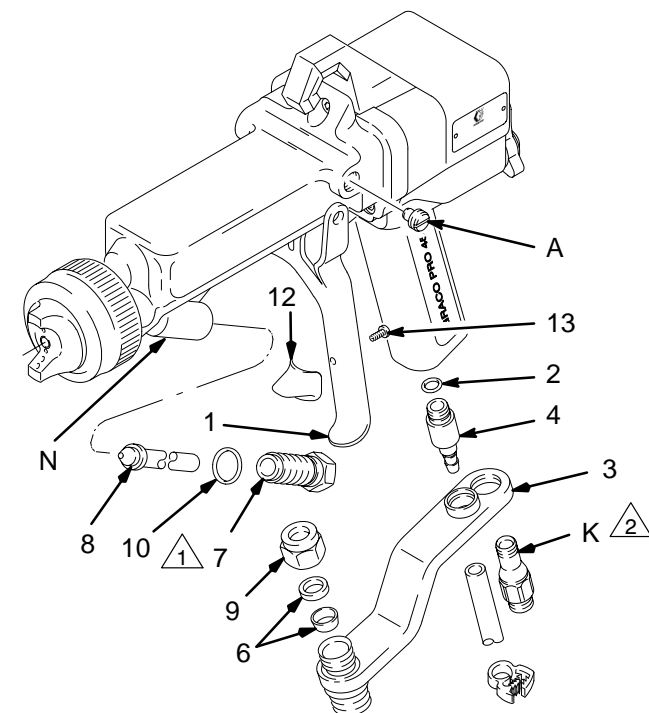
0848A

Continued on other side

Installation

8. Install the four-finger trigger (1) with the screws (A). See Fig. 2.
9. Install the o-ring (10) on the fluid inlet fitting (7). Stretch the o-ring to start it over the fitting threads, then thread it into place. Install the fitting on the new fluid tube (8).
10. Install the nut (9) and ferrules (6) on the fluid tube (8).
11. Assemble the tube to the new bracket (3). Make sure the tube bottoms out in the fluid adapter. Refer to Figs. 2 and 3.
12. Assemble the other end of the tube into the barrel (N). See Fig. 2. Make sure the tube bottoms out in the fitting. Torque the fluid inlet fitting to 25 to 35 in-lbs (2.8 to 4 N•m).
13. Install the o-ring (2) onto the barb fitting (4) and install the barb fitting into the gun handle.

PRO4500 Spray Gun with Four-Finger Trigger

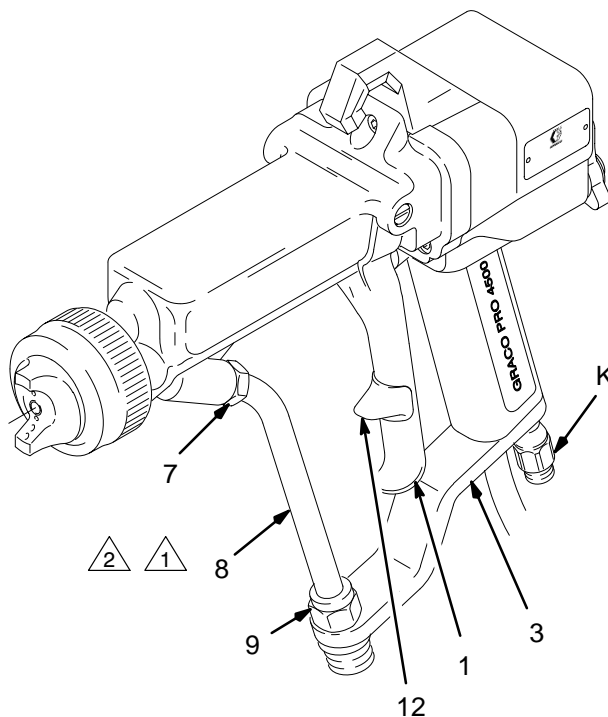


1. Torque fitting to 25–35 in-lbs (2.8–4 N•m).
2. Apply high strength (green) Loctite or equivalent to threads. Torque to 35–45 in-lbs (4–5.1 N•m) (left hand threads).

Fig. 2

0849B

14. Install the air adapter (K) through the bracket (3). Apply high strength Loctite® to the threads and install the adapter into the gun handle (adapter has left-hand threads). Torque the adapter to 35 to 45 in-lbs (4 to 5 N•m).



1. Install both ends of the fluid tube (8) before installing the adapter (K).
2. Make sure the tube bottoms out in the fittings.

0850B

Fig. 3

The kit includes the following parts:

Ref. No.	Part No.	Description	Qty.
1	189-034.	TRIGGER, four-finger	1
2	106-555	O-RING, Viton®	1
3	236-120	BRACKET, 4 finger	1
4	188-878	FITTING, barb	1
6	110-077	FERRULES, fluid tube	1
7	186-621	FITTING, barrel fluid inlet	1
8	224-910	TUBE, fluid	1
9	110-079	NUT, fluid tube	1
10	102-982	O-RING, Teflon®	1
12	189-023	TAB, finger	1
13	112-324	SCREW, mach.; 4-40 x 0.25"	1

Manual Change Summary: Deleted air fitting, Part No. 189-191 (11), from the kit. Changed item 10 from Viton® to Teflon® o-ring.