



INSTRUCTIONS

This manual contains important warnings and information.
READ AND KEEP FOR REFERENCE.

First choice when quality counts.™

Portable Evacuation System

100 psi (0.7 MPa, 7 bar) Maximum Working Pressure

40 to 50 psi (0.28 to 0.34 MPa, 2.8 to 3.4 bar) Recommended Operating Pressure

Model 223695

FOR GEAR LUBE USE ONLY *

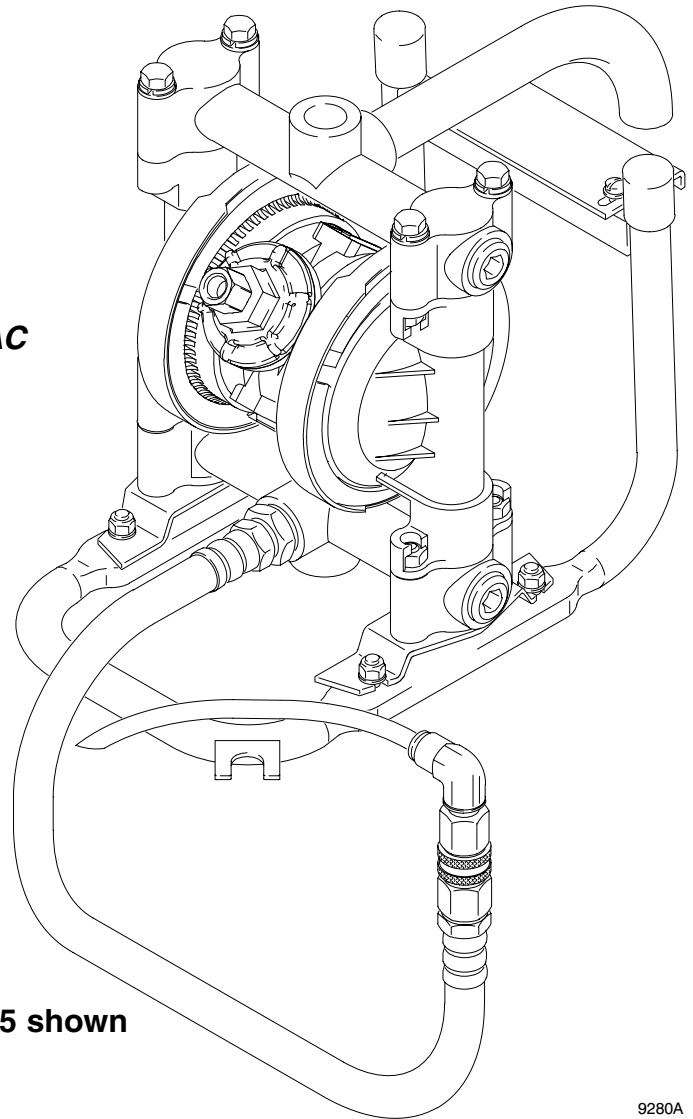
Includes a special Husky™ 716 diaphragm pump, a mounting frame that allows the pump to hang on the back of a rolling drain cart and discharge fluid directly into the cart, and a suction wand kit.

* To adapt for use with antifreeze and automatic transmission fluid, order optional Suction Kit 223888.

Model 235335

FOR GEAR LUBE EVAC or DRAIN PLUG EVAC

Includes a Husky™ 716 diaphragm pump, a mounting frame that allows the pump to hang on the back of a rolling drain cart and discharge fluid directly into the cart, a suction wand kit, and a drain plug adapter kit.



9280A

Table of Contents

Installation	2
Operation	5
Parts Drawings and Lists	
Model 223695	6
Model 235335	7
Graco Standard Warranty	8
Graco Phone Numbers	8

Model 223695 shown

GRACO INC. P.O. BOX 1441 MINNEAPOLIS, MN 55440-1441

©COPYRIGHT 1989, GRACO INC.

Graco Inc. is registered to I.S. EN ISO 9001

Installation

Grounding

WARNING



FIRE AND EXPLOSION HAZARD

This equipment must be grounded. Before operating the pump, ground the system as explained on this page.



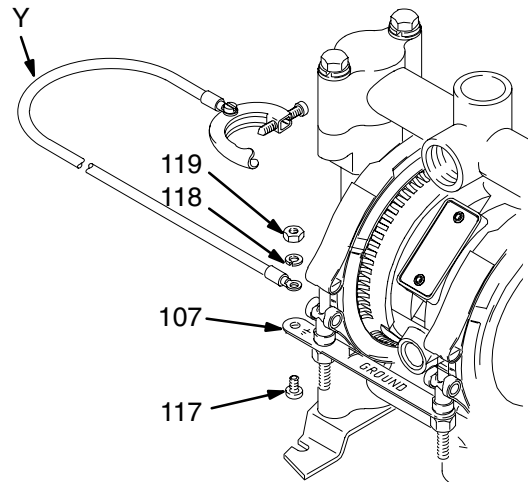
When pumping conductive flammable fluids, **always** ground the entire fluid system by making sure the fluid system has an electrical path to a true earth ground.

US Code (NFPA 77 Static Electricity) recommends a conductivity greater than 50×10^{-12} Siemens/meter (mhos/meter) over your operating temperature range to reduce the hazard of fire. Consult your fluid supplier to determine the conductivity or resistivity of your fluid. The resistivity must be less than 2×10^{12} ohm-centimeters.

To reduce the risk of static sparking, ground the pump and all other equipment used or located in the pumping area. Check your local electrical code for detailed grounding instructions for your area and type of equipment.

Ground all of this equipment:

- **Pump:** Attach a ground wire (Y) to the grounding strip (107) with the screw (117), lockwasher (118) and nut (119), as shown in Fig. 1. Connect the clamp end of the ground wire to a true earth ground. To order a ground wire and clamp, order Part No. 222011.



9247A

Fig. 1

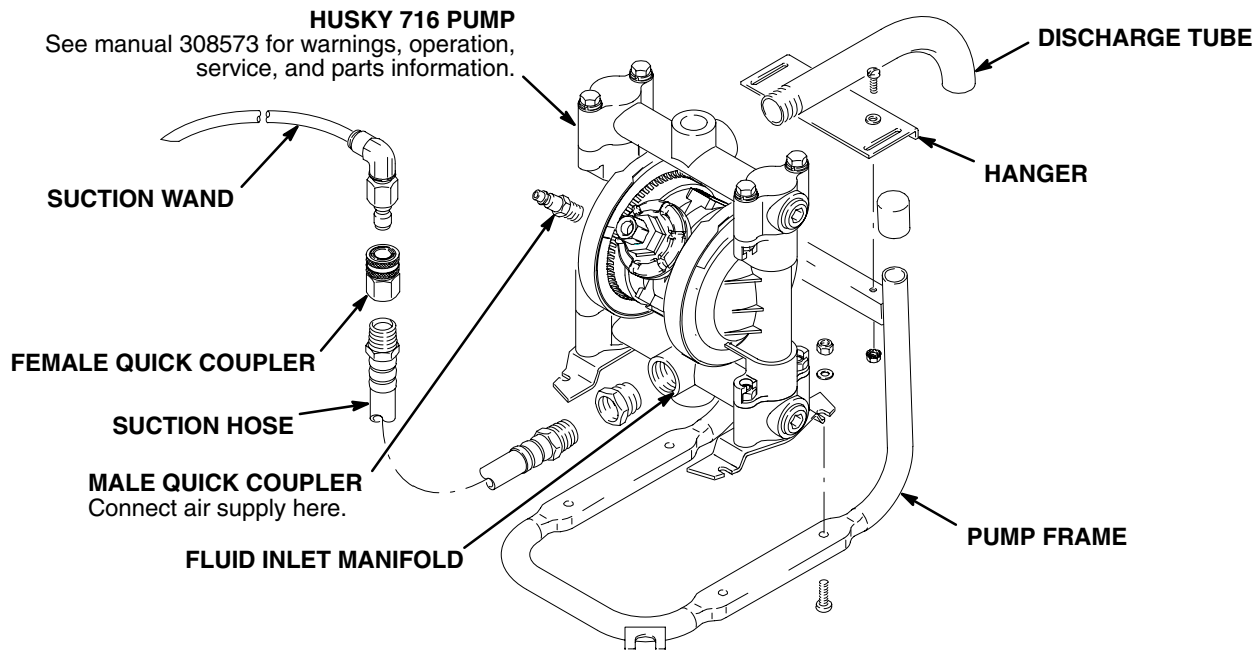
- **Air and fluid hoses:** Use only electrically conductive hoses.
- **Air compressor:** Follow the manufacturer's recommendations.
- **Solvent pails used when flushing:** Follow the local code. Use only grounded metal pails, which are conductive. Do not place the pail on a non-conductive surface, such as paper or cardboard, which interrupts the grounding continuity.
- **Fluid supply container:** Follow the local code.

Installation

1. Install all parts as shown. Apply sealant to all male pipe threads.
2. Ground the pump as explained on page 2.
3. Connect the air supply hose to the male quick coupler.
4. Hang the pump assembly over the back of a rolling drain cart. Adjust the sliding hanger so the hanger fits snugly against the rolling drain cart, and tighten the screw.
5. Connect a suction wand or the 45° swivel to the suction hose.

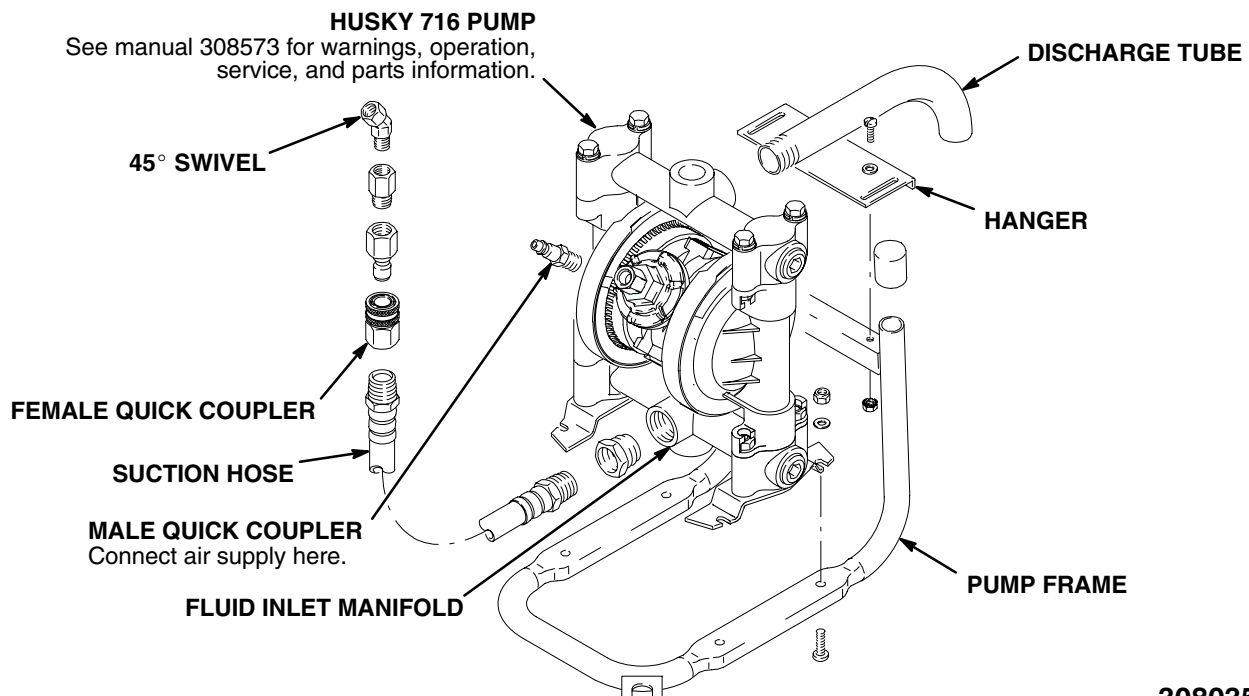
NOTE: When using a suction wand, always use the largest wand that will fit into the differential.

SETUP FOR GEAR LUBE EVACUATION



9281A

SETUP FOR DRAIN PLUG EVACUATION



9282A

Notes

[illegible]

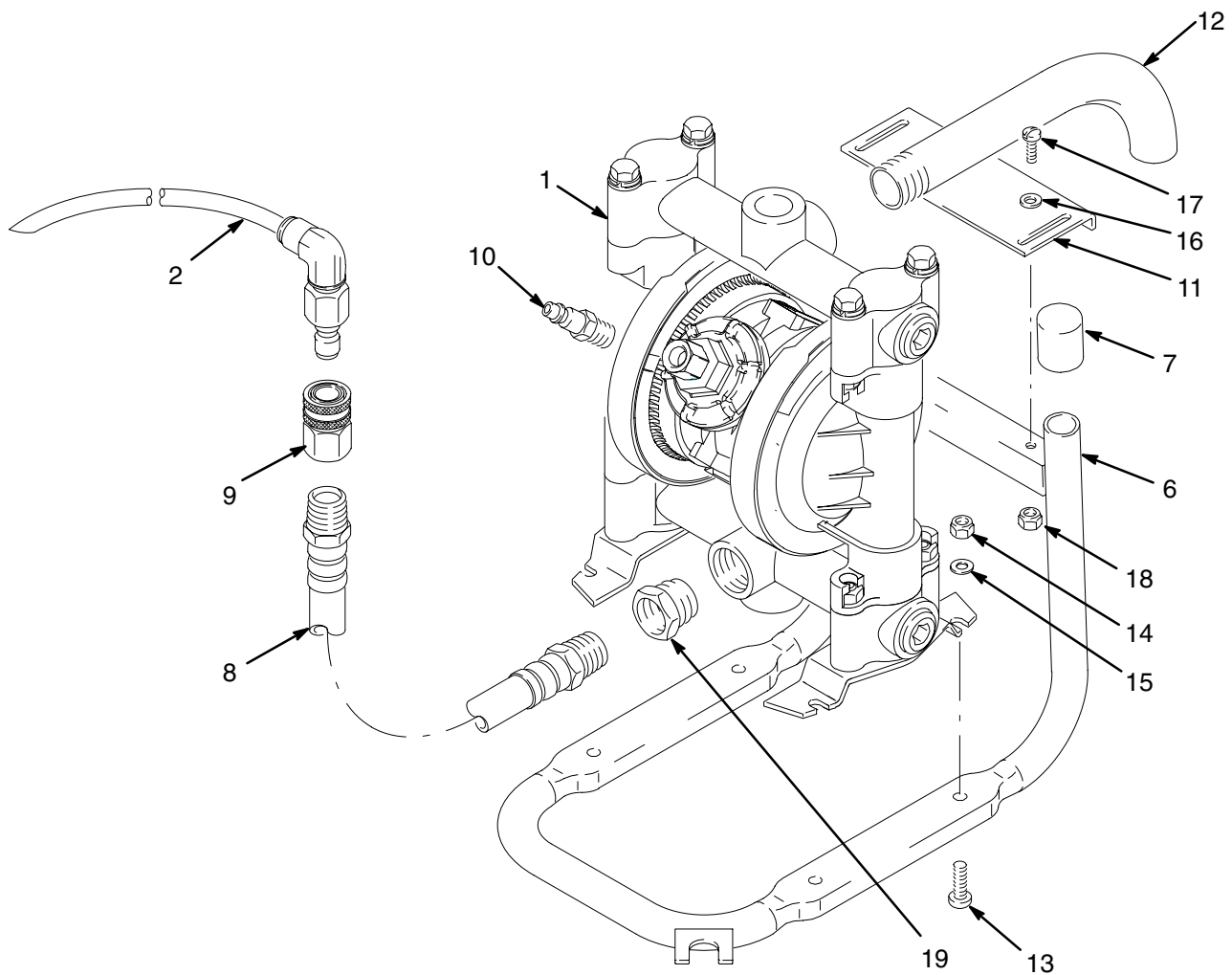
Operation

- Set the air pressure to 40 to 50 psi (0.28 to 0.34 MPa, 2.8 to 3.4 bar) for the best results. Connect the air supply hose to the male quick coupler. Disconnect the air supply hose when the evacuation is complete.
- To use the pump for draining antifreeze or ATF, use optional Suction Kit 223888. Connect the kit to the fluid inlet manifold.

Parts

Gear Lube Evacuation System, Model No. 223695

				Mounting Kit 223697 (includes items 6 to 19)			
Ref No.	Part No.	Description	Qty.	Ref No.	Part No.	Description	Qty.
1	241906	PUMP, diaphragm, Husky 716 <i>See manual 308573</i>	1	6	223694	FRAME	1
Suction Wand Kit 223696 (includes items 2 to 5)				7	110821	CAP	2
Ref No.	Part No.	Description	Qty.	8	111473	HOSE	1
2	221145	WAND; 1/2"	1	9	801569	QUICK COUPLER (F)	1
3	222025	WAND; 3/16" <i>not shown</i>	1	10	169970	QUICK DISCONNECT, air	1
4	222024	WAND; 1/4" <i>not shown</i>	1	11	186309	BRACKET, adjustment	1
5	221144	WAND; 3/8" <i>not shown</i>	1	12	186312	TUBE, discharge	1
				13	110823	SCREW	4
				14	102040	NUT, nylock	4
				15	158223	WASHER	4
				16	108193	WASHER	2
				17	100036	SCREW	2
				18	113505	NUT	2
				19	100896	BUSHING	1

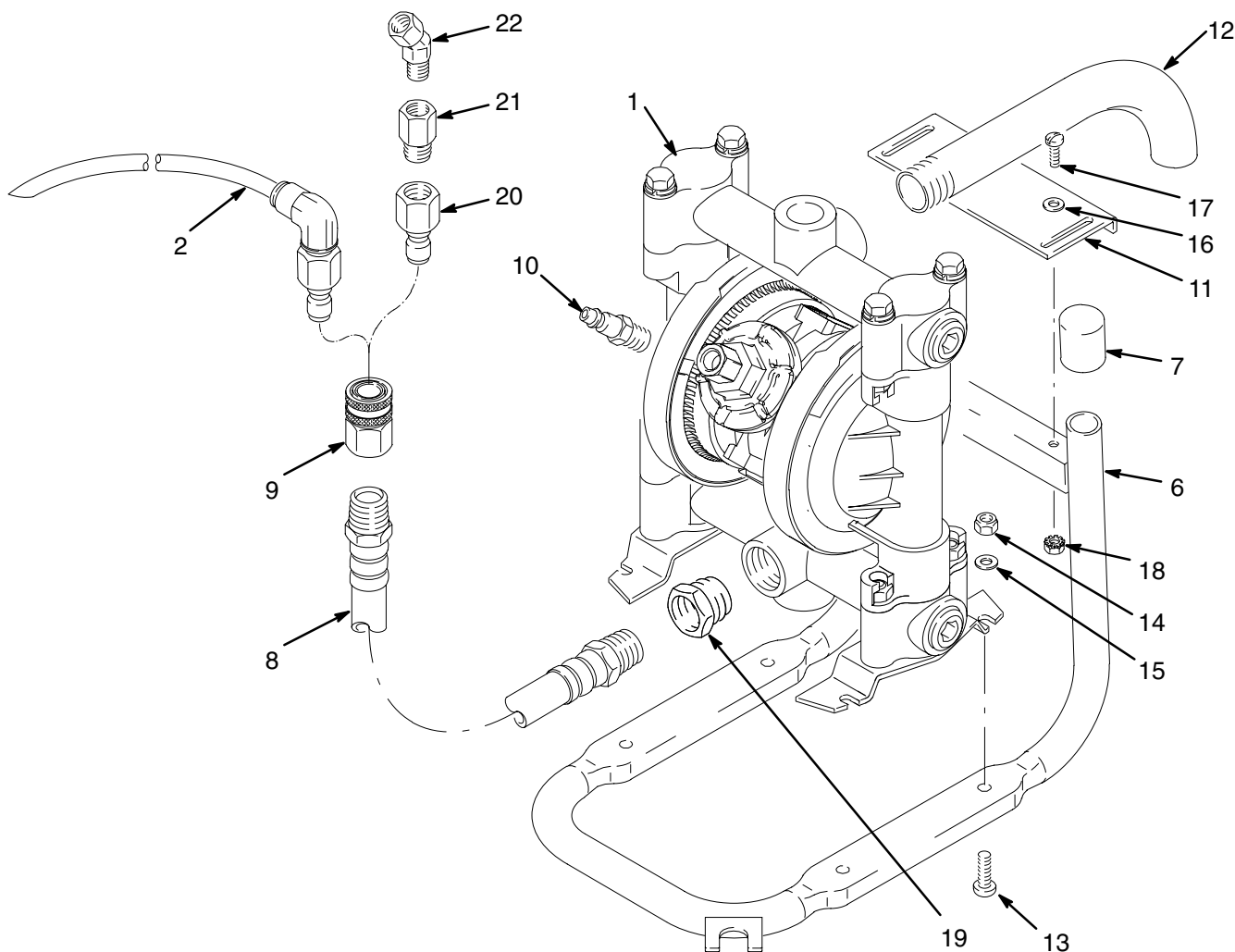


9281A

Parts

Drain Plug or Gear Lube Evacuation System, Model No. 235335

Ref No.	Part No.	Description	Qty.	Ref No.	Part No.	Description	Qty.
1	241906	PUMP, diaphragm, Husky 716 <i>See manual 308573</i>	1	9	801569	QUICK COUPLER (F)	1
Suction Wand Kit 223696 (includes items 2 to 5)				10	169970	QUICK DISCONNECT, air	1
Ref No.	Part No.	Description	Qty.	11	186309	BRACKET, adjustment	1
2	221145	WAND; 1/2"	1	12	186312	TUBE, discharge	1
3	222025	WAND; 3/16" <i>not shown</i>	1	13	110823	SCREW	4
4	222024	WAND; 1/4" <i>not shown</i>	1	14	102040	NUT, nylock	4
5	221144	WAND; 3/8" <i>not shown</i>	1	15	158223	WASHER	4
Mounting Kit 223697 (includes items 6 to 19)				16	108193	WASHER	2
Ref No.	Part No.	Description	Qty.	17	100036	SCREW	2
6	223694	FRAME	1	18	113505	NUT	2
7	110821	CAP	2	19	100896	BUSHING	1
8	111473	HOSE	1	Adapter Kit 235334 (includes items 20 to 22)			
				Ref No.	Part No.	Description	Qty.
				20	801568	QUICK COUPLER (M)	1
				21	159841	BUSHING	1
				22	160127	SWIVEL, 45°	1



9283A

Graco Standard Warranty

Graco warrants all equipment manufactured by Graco and bearing its name to be free from defects in material and workmanship on the date of sale by an authorized Graco distributor to the original purchaser for use. With the exception of any special, extended, or limited warranty published by Graco, Graco will, for a period of twelve months from the date of sale, repair or replace any part of the equipment determined by Graco to be defective. This warranty applies only when the equipment is installed, operated and maintained in accordance with Graco's written recommendations.

This warranty does not cover, and Graco shall not be liable for general wear and tear, or any malfunction, damage or wear caused by faulty installation, misapplication, abrasion, corrosion, inadequate or improper maintenance, negligence, accident, tampering, or substitution of non-Graco component parts. Nor shall Graco be liable for malfunction, damage or wear caused by the incompatibility of Graco equipment with structures, accessories, equipment or materials not supplied by Graco, or the improper design, manufacture, installation, operation or maintenance of structures, accessories, equipment or materials not supplied by Graco.

This warranty is conditioned upon the prepaid return of the equipment claimed to be defective to an authorized Graco distributor for verification of the claimed defect. If the claimed defect is verified, Graco will repair or replace free of charge any defective parts. The equipment will be returned to the original purchaser transportation prepaid. If inspection of the equipment does not disclose any defect in material or workmanship, repairs will be made at a reasonable charge, which charges may include the costs of parts, labor, and transportation.

THIS WARRANTY IS EXCLUSIVE, AND IS IN LIEU OF ANY OTHER WARRANTIES, EXPRESS OR IMPLIED, INCLUDING BUT NOT LIMITED TO WARRANTY OF MERCHANTABILITY OR WARRANTY OF FITNESS FOR A PARTICULAR PURPOSE.

Graco's sole obligation and buyer's sole remedy for any breach of warranty shall be as set forth above. The buyer agrees that no other remedy (including, but not limited to, incidental or consequential damages for lost profits, lost sales, injury to person or property, or any other incidental or consequential loss) shall be available. Any action for breach of warranty must be brought within two (2) years of the date of sale.

Graco makes no warranty, and disclaims all implied warranties of merchantability and fitness for a particular purpose in connection with accessories, equipment, materials or components sold but not manufactured by Graco. These items sold, but not manufactured by Graco (such as electric motors, switches, hose, etc.), are subject to the warranty, if any, of their manufacturer. Graco will provide purchaser with reasonable assistance in making any claim for breach of these warranties.

In no event will Graco be liable for indirect, incidental, special or consequential damages resulting from Graco supplying equipment hereunder, or the furnishing, performance, or use of any products or other goods sold hereto, whether due to a breach of contract, breach of warranty, the negligence of Graco, or otherwise.

FOR GRACO CANADA CUSTOMERS

The parties acknowledge that they have required that the present document, as well as all documents, notices and legal proceedings entered into, given or instituted pursuant hereto or relating directly or indirectly hereto, be drawn up in English. Les parties reconnaissent avoir convenu que la rédaction du présente document sera en Anglais, ainsi que tous documents, avis et procédures judiciaires exécutés, donnés ou intentés à la suite de ou en rapport, directement ou indirectement, avec les procédures concernées.

Graco Phone Numbers

TO PLACE AN ORDER, contact your Graco distributor, or call one of the following numbers to identify the distributor closest to you:

1-800-533-9655 Toll Free

612-623-6928

612-378-3590 Fax

*All written and visual data contained in this document reflects the latest product information available at the time of publication.
Graco reserves the right to make changes at any time without notice.*

Sales Offices: Minneapolis, Detroit

International Offices: Belgium, Korea, Hong Kong, Japan

GRACO INC. P.O. BOX 1441 MINNEAPOLIS, MN 55440-1441

www.graco.com

PRINTED IN USA 308035 March 1990, Revised May 2001