

# Instructions – Parts List



## Dispenser Bar

307742 rev.K

### Model 220107, Series A

900 psi (6.2 MPa, 62 bar) Maximum Fluid Working Pressure

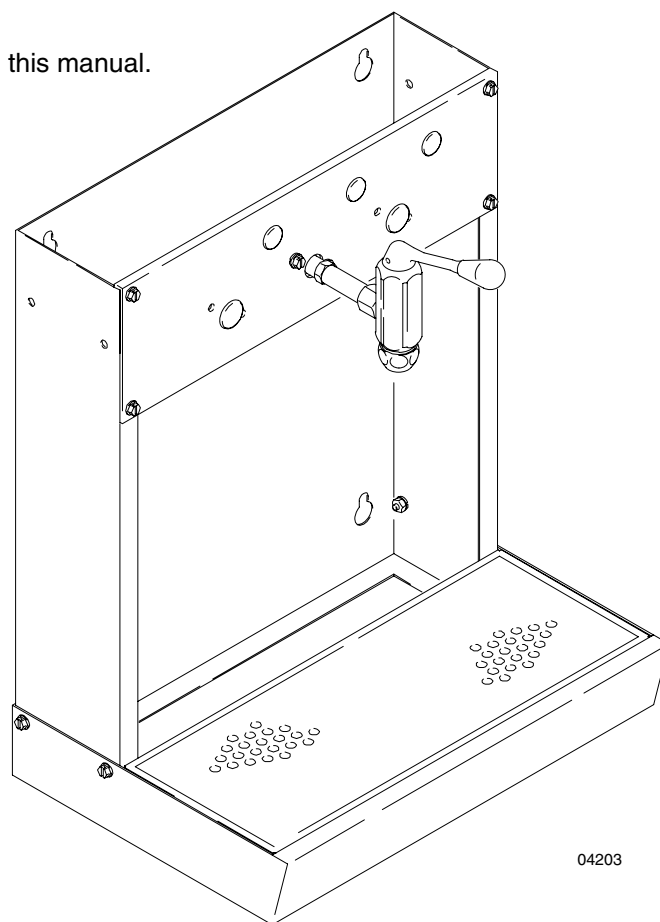
### Model 220107, Series A, with Meter Kit 239706

500 psi (3.4 MPa, 34 bar) Maximum Fluid Working Pressure



#### Important Safety Instructions

Read all warnings and instructions in this manual.  
Save these instructions.



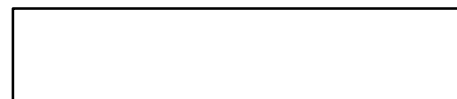
04203

**Model 220107  
Without Meter Kit**

## Table of Contents

Installation .....	2
Dispenser Bar Parts .....	3
Dispensing Valve Service .....	4
Dispensing Valve Parts .....	5
Accessories .....	6
Dimensions .....	7
Technical Data .....	7
Warranty .....	8
Graco Phone Number .....	8

PROVEN QUALITY. LEADING TECHNOLOGY.



# Installation

**NOTE:** Be sure to install a fluid shutoff valve, located close to the dispenser bar, to shut off fluid to the dispenser when servicing.

Refer to the Parts Drawing on page 3 to assemble the dispenser. The numbers in parentheses in the text refer to the numbers in the Parts Drawing.

## WARNING

### COMPONENT RUPTURE HAZARD

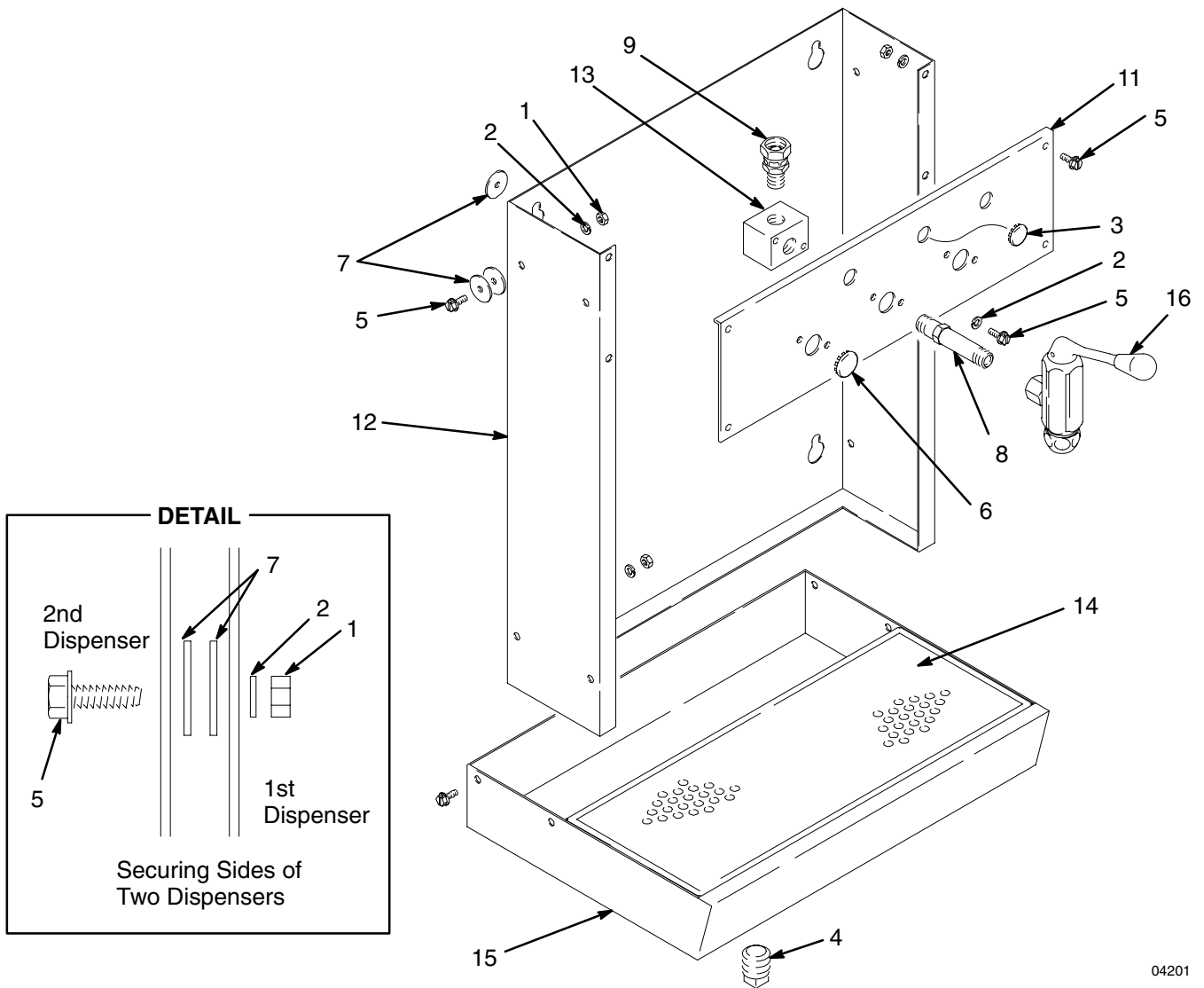
Do not exceed 900 psi (3.4 MPa, 34 bar) fluid pressure to the dispenser.

Do not exceed 500 psi (6.2 MPa, 62 bar) fluid pressure to the dispenser with a meter kit. Exceeding this pressure could cause the component to rupture and result in serious injury. A thermal pressure relief kit (235998) is required in closed systems that use this meter kit.

## Procedure

1. Slide strainer (14) into the front of drain pan (15).
2. Slide the back panel (12) into the drain pan (15) and secure it with the screws (5), lockwashers (2), and nuts (1).
3. Screw the pipe plug (4) into the bottom of the drain pan (15).
4. Mount the dispenser on the wall with the washers (7) and other suitable hardware. Be sure the wall and mounting hardware you use can support the combined weight of the dispenser, fluid, receiving containers, and any stress caused by operating the valve. Be sure to allow enough room under the drain pan (15) to drain fluid into a container.  
  
**NOTE:** Extra washers (7), screws (5), lockwashers (2), and nuts (1) are included for connecting the sides of two dispenser bars together. See the DETAIL in the Parts Drawing on page 3.
5. Insert the adapter (8) through the front panel (11). Screw the manifold (13) onto the adapter. Secure the manifold to the front panel with the two lockwashers (2) and screws (5).
6. Screw the valve (16) onto the adapter (8). Make sure the valve's outlet points down.
7. Screw the swivel union (9) into the manifold (13).
8. Connect the front panel (11) to the back panel (12) with the screws (5), lockwashers (2), and nuts (1).
9. Plug each unused hole in the front panel (11) with the screws (5) and lockwashers (2), the 7/8 in. button plugs (3), or the 1-1/16 in. button plugs (6), as appropriate.  
  
**NOTE:** A Solenoid Valve and Ready Light Kit are available for signaling when an order is ready to dispense. See **Accessories** on page 6.
10. Connect the fluid line to the swivel union (9).

# Parts



04201

## Oil Dispenser Model 220107, Series A Ref.

No.	Part No.	Description	Qty.
1	100015	NUT, hex; 1/4-20 unc-2A	16
2	100016	LOCKWASHER; 1/4 in.	18
3	102521	BUTTON, plug; 7/8 in. dia.	3
4	104663	PLUG, pipe, sq hd; 3/4-14 npt	1
5	108296	SCREW, hex washer hd; 1/4-20 unc-2A, 5/8 in. long	18
6	108297	BUTTON, plug; 1-1/16 in. dia	2
7	159346	WASHER; 1/4 in.	6
8*	160790	NIPPLE, adapter	1
9*	162505	UNION, swivel	1
11	181315	PANEL, front	1
12	181316	PANEL, back	1
13*	181317	MANIFOLD, dispenser	1
14	181319	STRAINER, pan	1
15	181318	PAN, drain	1
16*	220110	VALVE (see page 5 for parts)	1

\* Supplied in Dispenser Valve Kit 220112.  
See **Accessories**.

# Service

## Dispensing Valve Service and Adjustment

1. To clean or replace the valve seal (107), screw the valve nozzle (106) off the valve housing (111). Remove the gasket (109). Unscrew the retaining screw (108) from the valve stem (110). Remove the valve seal (107). See the Parts Drawing, page 5. Clean and inspect all parts and replace as necessary. Reassemble the valve, making sure the gasket (109) is in place.
2. To adjust the dispensing valve, drive the pin (113) out of the handle (103) with a 1/8 in. drift pin. Remove the valve handle (103) from the stem (110). See Parts Drawing, page 5. Turn the adjusting nut (104) upward until a small gap (0.040 in. maximum) exists between the handle (103) and the valve housing (111) when the valve is reassembled. Reinstall the handle on the stem. Reinstall the pin.

**NOTE:** Clearance between the valve handle (103) and valve housing (111) is necessary to ensure proper dispensing valve operation.

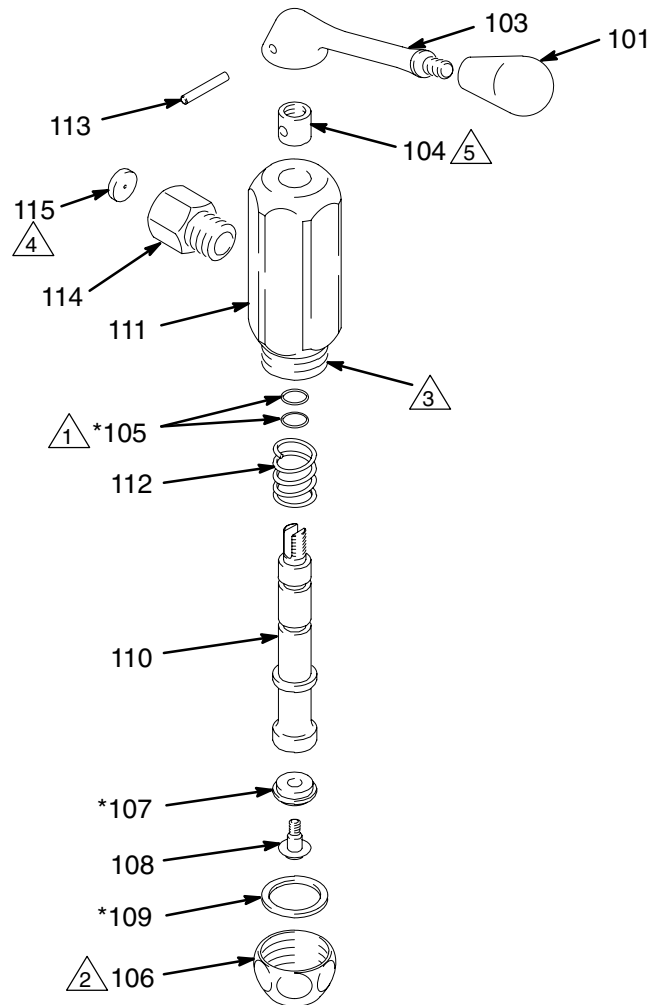
3. To replace the valve stem (110), spring (112) or packings (105), remove the valve handle (103) as described in step 2. Screw the valve nozzle (106) off the valve housing (111). Remove the gasket (109). Screw adjusting nut (104) off the valve stem. Pull the stem out through the bottom of the valve housing. See Parts Drawing, page 5. Clean and inspect all parts and replace as necessary. Reassemble valve. Adjust it as described in step 2.

# Parts

## Ref. No. 16 Model 220110 Dispensing Valve

Ref. No.	Part No.	Description	Qty.
101	108789	KNOB, handle	1
103	154773	HANDLE	1
104	154891	NUT, adjusting	1
105*	154594	PACKING, o-ring; nitrile rubber	2
106	166779	NOZZLE, valve	1
107*	156312	SEAL, valve; nitrile rubber	1
108	156311	SCREW, valve	1
109*	154779	GASKET	1
110	154781	STEM, valve	1
111	179932	HOUSING, valve	1
112	150534	SPRING, compression	1
113	155473	PIN, 5/32 in. x 1 in. long	1
114	112122	ADAPTER, 3/8 in. (m x f) npt	1
115	190223	RESTRICTOR	1

\* Recommended "tool box" spare parts. Keep on hand to reduce downtime.



- 1 Apply lubricant to o-ring.
- 2 Torque to 120 to 130 in-lb (14 to 15 N-m).
- 3 Apply lubricant to housing threads.
- 4 Press fit.
- 5 Turn nut (104) upward until a small gap (0.040 in. max.) exists between the handle (103) and the housing (111). See step 2 under Service.

04202

# Accessories

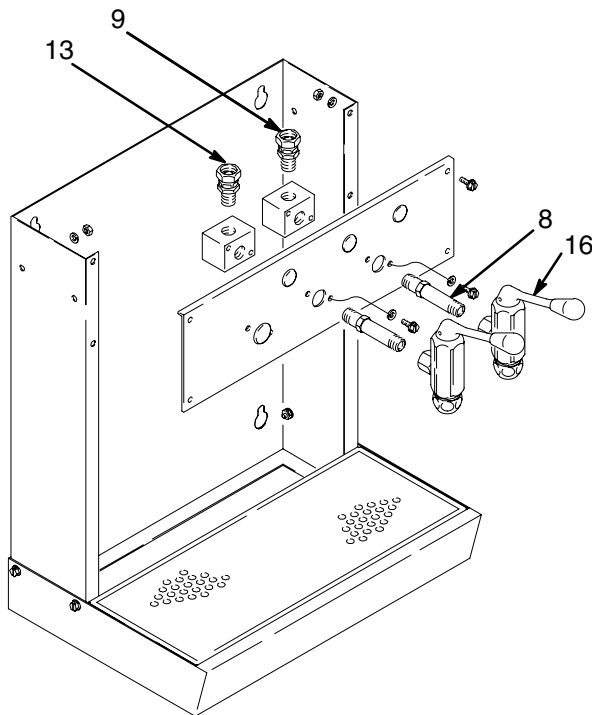
## Solenoid Valve and Ready Light Kit 218588

Air operated solenoid valve opens and closes to control fluid flow to the dispensing station. Light signals the operator when the order is ready to dispense. See manual 307696.

## Dispenser Valve Kit 220112

To add an additional dispenser valve.

Ref. No.	Part No.	Description	Qty.
8	160790	NIPPLE, adapter	1
9	162505	UNION, swivel	1
13	181317	MANIFOLD, dispenser	1
16	220110	VALVE (see page 5 for parts)	1



04205

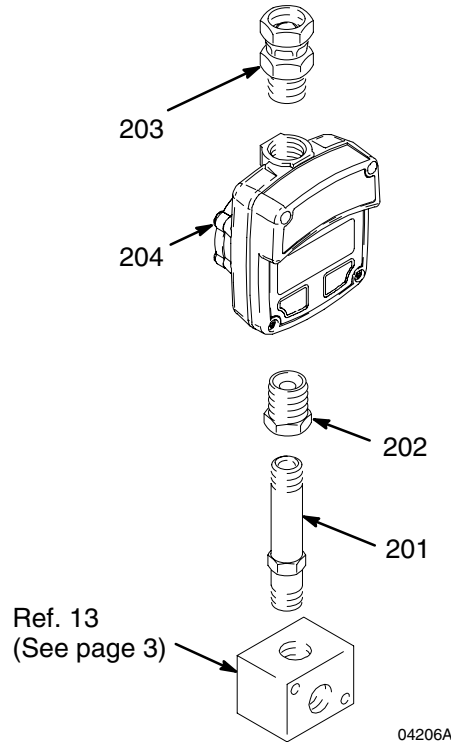
## Thermal Relief Kit 235998

(1/2 npt(m) x 1/2 npt(f))  
Install downstream from the pump.

## Dispenser Meter Kit 239706

To add an electronic gallon / quart / pint / liter totalizing meter.

Ref. No.	Part No.	Description	Qty.
201	160790	NIPPLE, adapter	1
202	100081	BUSHING, pipe; 1/2 x 3/8 npt	1
203	156684	UNION, adapter	1
204	239824	METER, electronic	1

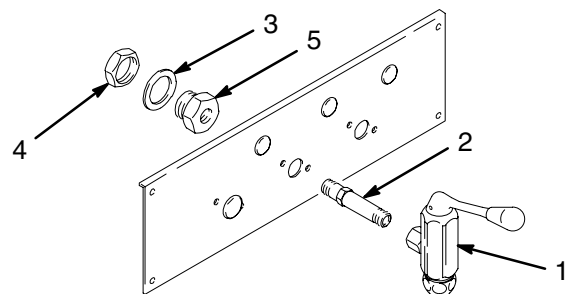


04206A

## Dispenser Valve Kit 221127

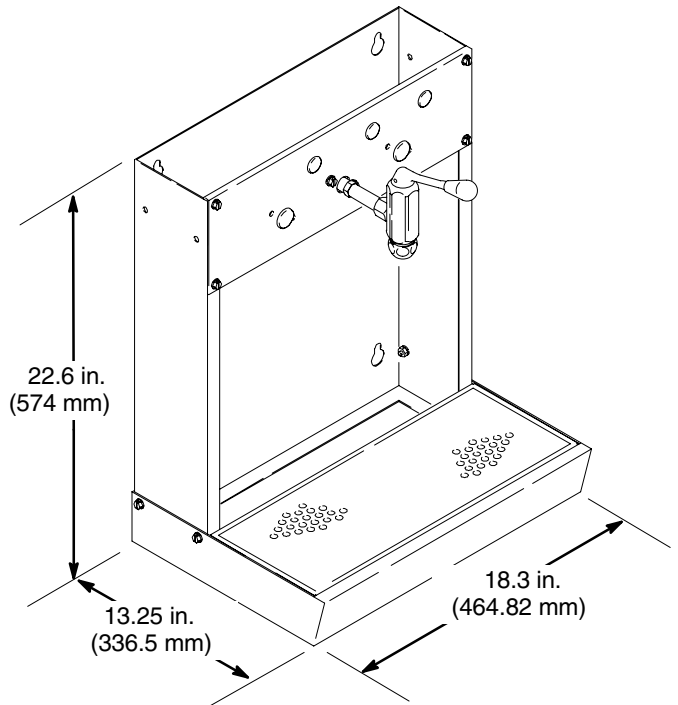
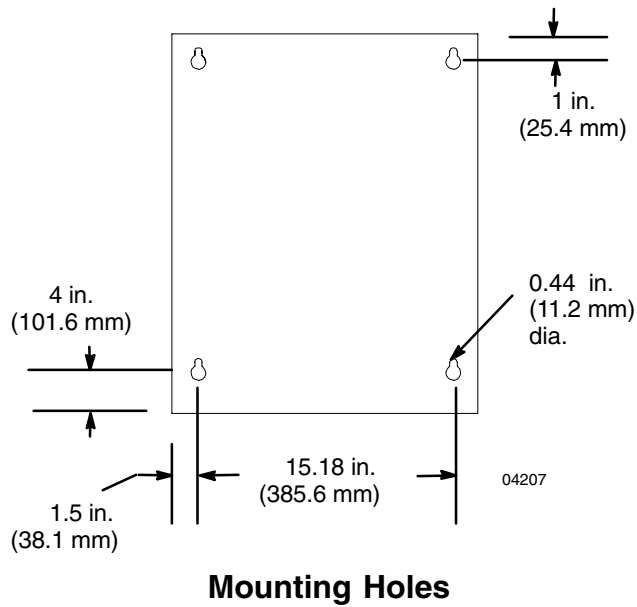
Adapts dispensing valve 220110 to the old style dispensing bars.

Ref. No.	Part No.	Description	Qty.
1	220110	VALVE, dispensing	1
2	160790	NIPPLE, adapter	1
3	166797	WASHER	1
4	154969	NUT	1
5	183628	ADAPTER	1



04204

# Dimensional Drawings



## Technical Data

Fluid inlet size	1/2 npt
Drain hose size	3/4 npt
Weight	35 lb (15.75 kg)
Maximum working pressure	
Dispenser only	900 psi (6.2 MPa, 62 bar)
Dispenser with meter kit	500 psi (3.4 MPa, 34 bar)

# Graco Standard Warranty

Graco warrants all equipment manufactured by Graco and bearing its name to be free from defects in material and workmanship on the date of sale to the original purchaser for use. With the exception of any special, extended, or limited warranty published by Graco, Graco will, for a period of twelve months from the date of sale, repair or replace any part of the equipment determined by Graco to be defective. This warranty applies only when the equipment is installed, operated and maintained in accordance with Graco's written recommendations.

This warranty does not cover, and Graco shall not be liable for general wear and tear, or any malfunction, damage or wear caused by faulty installation, misapplication, abrasion, corrosion, inadequate or improper maintenance, negligence, accident, tampering, or substitution of non-Graco component parts. Nor shall Graco be liable for malfunction, damage or wear caused by the incompatibility of Graco equipment with structures, accessories, equipment or materials not supplied by Graco, or the improper design, manufacture, installation, operation or maintenance of structures, accessories, equipment or materials not supplied by Graco.

This warranty is conditioned upon the prepaid return of the equipment claimed to be defective to an authorized Graco distributor for verification of the claimed defect. If the claimed defect is verified, Graco will repair or replace free of charge any defective parts. The equipment will be returned to the original purchaser transportation prepaid. If inspection of the equipment does not disclose any defect in material or workmanship, repairs will be made at a reasonable charge, which charges may include the costs of parts, labor, and transportation.

**THIS WARRANTY IS EXCLUSIVE, AND IS IN LIEU OF ANY OTHER WARRANTIES, EXPRESS OR IMPLIED, INCLUDING BUT NOT LIMITED TO WARRANTY OF MERCHANTABILITY OR WARRANTY OF FITNESS FOR A PARTICULAR PURPOSE.**

Graco's sole obligation and buyer's sole remedy for any breach of warranty shall be as set forth above. The buyer agrees that no other remedy (including, but not limited to, incidental or consequential damages for lost profits, lost sales, injury to person or property, or any other incidental or consequential loss) shall be available. Any action for breach of warranty must be brought within two (2) years of the date of sale.

Graco makes no warranty, and disclaims all implied warranties of merchantability and fitness for a particular purpose in connection with accessories, equipment, materials or components sold but not manufactured by Graco. These items sold, but not manufactured by Graco (such as electric motors, switches, hose, etc.), are subject to the warranty, if any, of their manufacturer. Graco will provide purchaser with reasonable assistance in making any claim for breach of these warranties.

In no event will Graco be liable for indirect, incidental, special or consequential damages resulting from Graco supplying equipment hereunder, or the furnishing, performance, or use of any products or other goods sold hereto, whether due to a breach of contract, breach of warranty, the negligence of Graco, or otherwise.

## **FOR GRACO CANADA CUSTOMERS**

The parties acknowledge that they have required that the present document, as well as all documents, notices and legal proceedings entered into, given or instituted pursuant hereto or relating directly or indirectly hereto, be drawn up in English. Les parties reconnaissent avoir convenu que la rédaction du présente document sera en Anglais, ainsi que tous documents, avis et procédures judiciaires exécutés, donnés ou intentés à la suite de ou en rapport, directement ou indirectement, avec les procédures concernées.

# Graco Phone Numbers

**TO PLACE AN ORDER**, contact your Graco distributor, or call one of the following numbers to identify the distributor closest to you:

**1-800-533-9655 Toll Free**

**612-623-6928**

**612-378-3590 Fax**

*All written and visual data contained in this document reflects the latest product information available at the time of publication.  
Graco reserves the right to make changes at any time without notice.*

MM 307742

**Graco Headquarters:** Minneapolis

**International Offices:** Belgium, Korea, China, Japan

**GRACO INC. P.O. BOX 1441 MINNEAPOLIS, MN 55440-1441**

**www.graco.com**

307742 July 1985, Revised 06/2006