



**GRACO**

*First choice when  
quality counts.™*

Rev. E

Supersedes Rev. D



INSTRUCTIONS

This manual contains important  
warnings and information.  
**READ AND KEEP FOR REFERENCE.**

Hand-Operated, 120-lb Size

## Gear Grease Pack

*175 psi (1.2 MPa, 12 bar) Maximum Working Pressure*

### Model 239-708, Series A

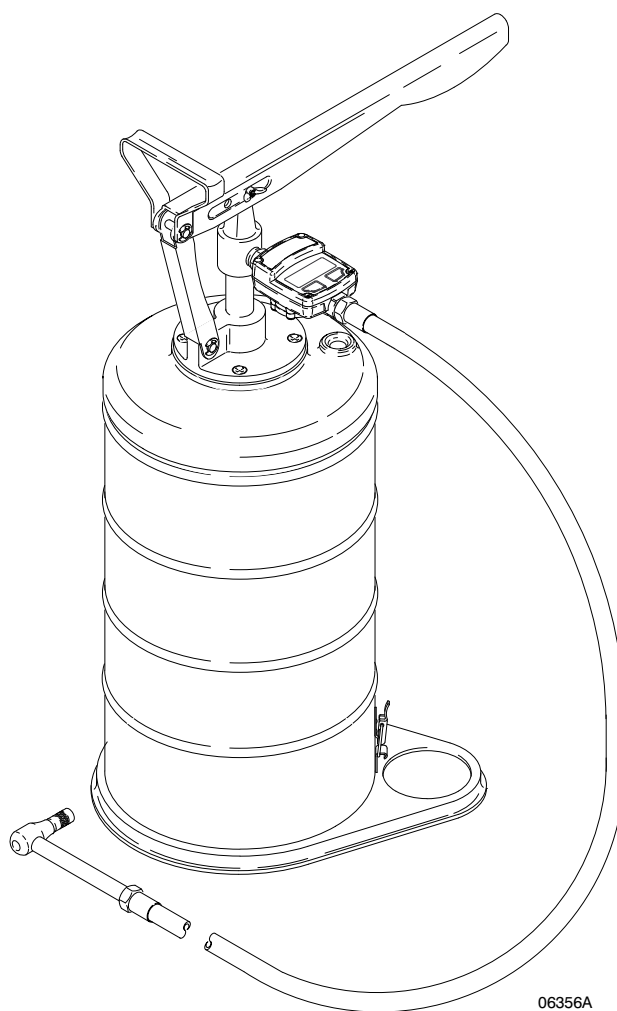
With shield and inline electronic meter

### Model 225-820, Series A

With shield

## Table of Contents

Warnings .....	2
Installation .....	4
Operation .....	5
Service .....	5
Parts Drawing and List .....	6
Graco Warranty .....	8
Graco Phone Number .....	8



06356A

**Model 239-708**

**GRACO INC. P.O. BOX 1441 MINNEAPOLIS, MN 55440-1441**

<http://www.graco.com>

©COPYRIGHT 1996, GRACO INC.

Graco Inc. is registered to I.S. EN ISO 9001

# Symbols

## Warning Symbol



This symbol alerts you to the possibility of serious injury or death if you do not follow the instructions.

## Caution Symbol



This symbol alerts you to the possibility of damage to or destruction of equipment if you do not follow the instructions.

## WARNING



INSTRUCTIONS

### EQUIPMENT MISUSE HAZARD

Equipment misuse can cause the equipment to rupture or malfunction and result in serious injury.

- This equipment is for professional use only.
- Read all instruction manuals, tags, and labels before operating the equipment.
- Use the equipment only for its intended purpose. If you are not sure, call your Graco distributor.
- Do not alter or modify this equipment.
- Check equipment daily. Repair or replace worn or damaged parts immediately.
- Handle hoses carefully. Do not pull on hoses to move equipment.
- Route hoses away from traffic areas, sharp edges, moving parts, and hot surfaces. Do not expose Graco hoses to temperatures above 66°C (150°F) or below -40°C (-40°F).
- Do not move or lift pressurized equipment.
- Comply with all applicable local, state, and national fire, electrical, and safety regulations.

# **WARNING**



## **PRESSURIZED EQUIPMENT HAZARD**

Spray from the gun, hose leaks, or ruptured components can splash fluid in the eyes or on the skin and cause serious injury.

- Do not stop or deflect leaks with your hand, body, glove or rag.
- Do not point the dispensing valve at anyone or at any part of the body.
- Do not put your hands or fingers over the grease fitting coupler.
- Tighten all fluid connections before operating the equipment
- Check the hoses, tubes, and couplings daily. Replace worn, damaged, or loose parts immediately.



## **TOXIC FLUID HAZARD**

Hazardous fluid or toxic fumes can cause serious injury or death if splashed in the eyes or on the skin, inhaled, or swallowed.

- Know the specific hazards of the fluid you are using.
- Store hazardous fluid in an approved container. Dispose of hazardous fluid according to all local, state and national guidelines.
- Always wear protective eyewear, gloves, clothing and respirator as recommended by the fluid and solvent manufacturer.

# Installation

**NOTE:** Apply sealant to all male threads.

## Model 239–708

1. Screw one end of the nipple (32) into the pump outlet.
2. Screw the meter (31) onto the nipple (32).
3. Screw the hose (25a) into the meter.

## Model 225–820

1. Screw the hose (25a) into the pump outlet.

## All Models

1. Insert nozzle (23) in the top hole of the shield (28).
2. Release the lower clamp. Lift the shield and pump, and set them on a clean surface.
3. Fill the container with grease.
4. Reinstall the shield (28) and pump. Secure the clamp

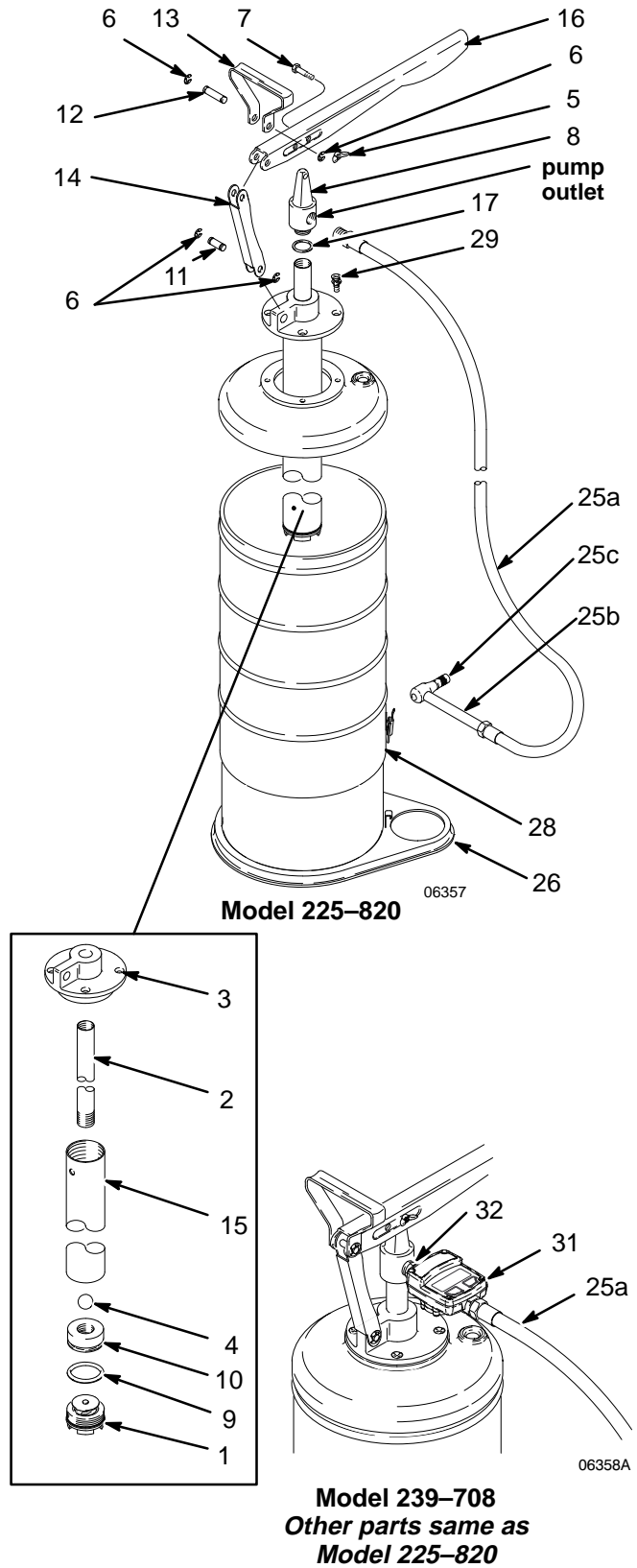


Fig. 1

# Operation

## WARNING

To reduce the risk of getting grease in the eyes, which can cause serious injury, wear protective eyewear, and always point the dispensing nozzle (23) away from your face or body when dispensing.

### All models

1. Open the nozzle, and point it into a waste container.
2. Pump the handle (16) to charge the hose.

**NOTE:** For greater leverage when pumping more viscous grease, remove the wing nut (5) from the pivot screw (7). Move the screw to the pump handle (16) holes closest to the carry handle (13).

### Model 239–708

**NOTE:** After each use, reset the meter (31).

## CAUTION

Keep the nozzle, container, and pump clean to avoid contaminating the grease. This can cause mechanical problems in parts you are greasing.

# Service

## Pump (Fig. 1)

**NOTE:** A held open or worn foot valve (1), piston (10), check ball, worn o-ring (9), or loose connecting tube (2) may cause low delivery. Follow the following procedure to disassemble and inspect parts:

1. Unlatch and remove shield (28). Remove screws (29)
2. Unscrew foot valve (1). Clean in compatible solvent.
3. Unscrew cylinder (15). Inspect o-ring (9) and replace if worn or damaged.

## CAUTION

Do not grip the aluminum piston with any tool that could damage its surface or o-ring groove

4. Carefully unscrew the piston (10) from the connecting tube (2). Clean the piston. To reseal the ball, use a brass rod and hammer, tapping lightly against its seat.
5. Reassemble the pump in the reverse order of steps 1 through 4. The piston must slide freely in the cylinder.

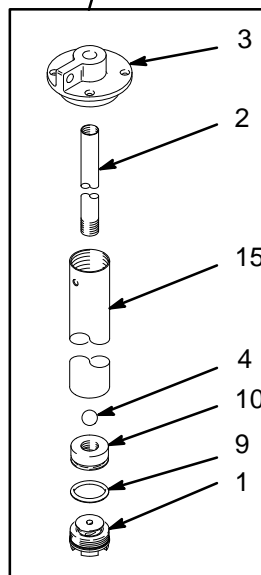
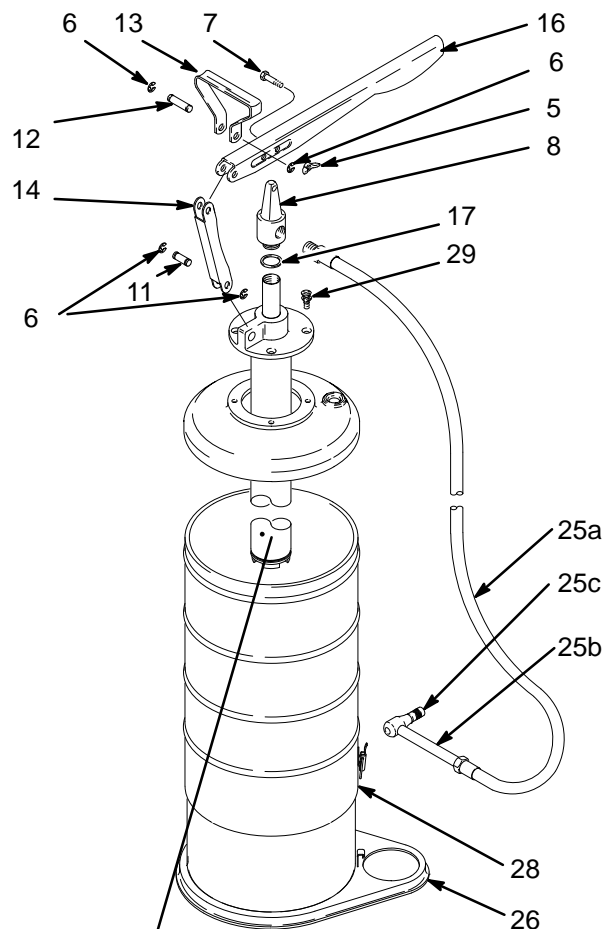
**NOTE:** If the cylinder (15) is removed or replaced, clean the threads and apply sealant. With the gasket (17) in place, tightly screw the cylinder into the pump head (8).

## Meter (Ref. No. 31 in Fig. 1)

See meter instruction manual 308–687.

# Parts List and Drawing

Ref. No.	Part No.	Description	Qty.
A	203-052	PUMP <i>Includes items 1 to 17</i>	1
1	202-510	FOOT VALVE	1
2	203-053	TUBE, connecting <i>Includes items 2a and 2b</i>	1
2a	150-843	. STOP, ball	1
2b	158-766	. TUBE, connecting	1
3	203-054	BASE, pump	1
4	100-064	BALL, steel; 5/8" (16 mm) dia	1
5	100-191	NUT, wing; 5/16-18	1
6	101-134	RING, retaining	4
7	150-662	SCREW, pivot	1
8	150-834	HEAD, pump	1
9	154-530	RING, packing	1
10	154-604	PISTON	1
11	156-705	PIN, short, pivot	1
12	158-033	PIN, pivot	1
13	158-035	HANDLE, carry	1
14	158-765	LINK	1
15	158-768	TUBE	1
16	158-769	HANDLE, pump	1
17	170-732	GASKET, copper	1
25	214-658	HOSE ASSEMBLY <i>includes items 25a-25c</i>	1
25a	214-657	.HOSE, 1/2" (13 mm) ID, cpd; 1/4 npt(f) x 1/2 npt(m); 5' (1.5 m) long	1
25b	100-200	.NIPPLE, long; 1/2 npt x 6"	1
25c	200-348	.NOZZLE, tip	1
26	202-662	CONTAINER	1
28	203-055	SHIELD	1
29	100-326	SCREW, flat hd; mach; 1/4-20 x 1/2"	4
30	158-687	DECAL, grease pack	1
31	239-824	METER, inline electronic (Model 239-708 only) <i>See Fig. 1.</i>	1
32	158-491	ADAPTER, nipple, 1/2 npt (Model 239-708 only) <i>See Fig. 1.</i>	1



06357

[illegible]

# Graco Standard Warranty

Graco warrants all equipment manufactured by Graco and bearing its name to be free from defects in material and workmanship on the date of sale by an authorized Graco distributor to the original purchaser for use. With the exception of any special, extended, or limited warranty published by Graco, Graco will, for a period of twelve months from the date of sale, repair or replace any part of the equipment determined by Graco to be defective. This warranty applies only when the equipment is installed, operated and maintained in accordance with Graco's written recommendations.

This warranty does not cover, and Graco shall not be liable for general wear and tear, or any malfunction, damage or wear caused by faulty installation, misapplication, abrasion, corrosion, inadequate or improper maintenance, negligence, accident, tampering, or substitution of non-Graco component parts. Nor shall Graco be liable for malfunction, damage or wear caused by the incompatibility of Graco equipment with structures, accessories, equipment or materials not supplied by Graco, or the improper design, manufacture, installation, operation or maintenance of structures, accessories, equipment or materials not supplied by Graco.

This warranty is conditioned upon the prepaid return of the equipment claimed to be defective to an authorized Graco distributor for verification of the claimed defect. If the claimed defect is verified, Graco will repair or replace free of charge any defective parts. The equipment will be returned to the original purchaser transportation prepaid. If inspection of the equipment does not disclose any defect in material or workmanship, repairs will be made at a reasonable charge, which charges may include the costs of parts, labor, and transportation.

**THIS WARRANTY IS EXCLUSIVE, AND IS IN LIEU OF ANY OTHER WARRANTIES, EXPRESS OR IMPLIED, INCLUDING BUT NOT LIMITED TO WARRANTY OF MERCHANTABILITY OR WARRANTY OF FITNESS FOR A PARTICULAR PURPOSE.**

Graco's sole obligation and buyer's sole remedy for any breach of warranty shall be as set forth above. The buyer agrees that no other remedy (including, but not limited to, incidental or consequential damages for lost profits, lost sales, injury to person or property, or any other incidental or consequential loss) shall be available. Any action for breach of warranty must be brought within two (2) years of the date of sale.

Graco makes no warranty, and disclaims all implied warranties of merchantability and fitness for a particular purpose in connection with accessories, equipment, materials or components sold but not manufactured by Graco. These items sold, but not manufactured by Graco (such as electric motors, switches, hose, etc.), are subject to the warranty, if any, of their manufacturer. Graco will provide purchaser with reasonable assistance in making any claim for breach of these warranties.

In no event will Graco be liable for indirect, incidental, special or consequential damages resulting from Graco supplying equipment hereunder, or the furnishing, performance, or use of any products or other goods sold hereto, whether due to a breach of contract, breach of warranty, the negligence of Graco, or otherwise.

## **FOR GRACO CANADA CUSTOMERS**

The parties acknowledge that they have required that the present document, as well as all documents, notices and legal proceedings entered into, given or instituted pursuant hereto or relating directly or indirectly hereto, be drawn up in English. Les parties reconnaissent avoir convenu que la rédaction du présente document sera en Anglais, ainsi que tous documents, avis et procédures judiciaires exécutés, donnés ou intentés à la suite de ou en rapport, directement ou indirectement, avec les procédures concernées.

## Graco Phone Number

**TO PLACE AN ORDER**, contact your Graco distributor, or call this number to identify the distributor closest to you: **1-800-367-4023 Toll Free**

## Manual Change Summary

This manual went from Rev. D to Rev. E to make the following changes:

- Model No. 236-444 is deleted.
- Model No. 225-819 is changed to 239-708.

*All written and visual data contained in this document reflects the latest product information available at the time of publication.  
Graco reserves the right to make changes at any time without notice.*

**Sales Offices:** Minneapolis, Detroit, Los Angeles  
**Foreign Offices:** Belgium, Canada, England, Korea, France, Germany, Hong Kong, Japan

**GRACO INC. P.O. BOX 1441 MINNEAPOLIS, MN 55440-1441**

**<http://www.graco.com>**

PRINTED IN U.S.A. 306-327 April 1951, Revised November 1997